

4321123 2000

# U.S. PUBLIC LAND SURVEY MONUMENT RECORD

(Prepared and as required by S. A-E 7.08 WI Administrative Code)

The EAST 1/4 corner of Section 23, T. 32 N., R. 11 E., Langlade County, WI  
Corner was (check all that apply)

- Restored through acceptance of an obliterated evidence location.
- Restored through acceptance of a found perpetuated location.
- Determined to be lost and re-established through proportionate methods. (show bearings and distances to PLSS corners used for proportioning.)
- Restored/recovered/re-established in a location that differs from a previously established position. (Show difference in plan view below.)
- Check here if additional information is shown on the reverse side of this form.

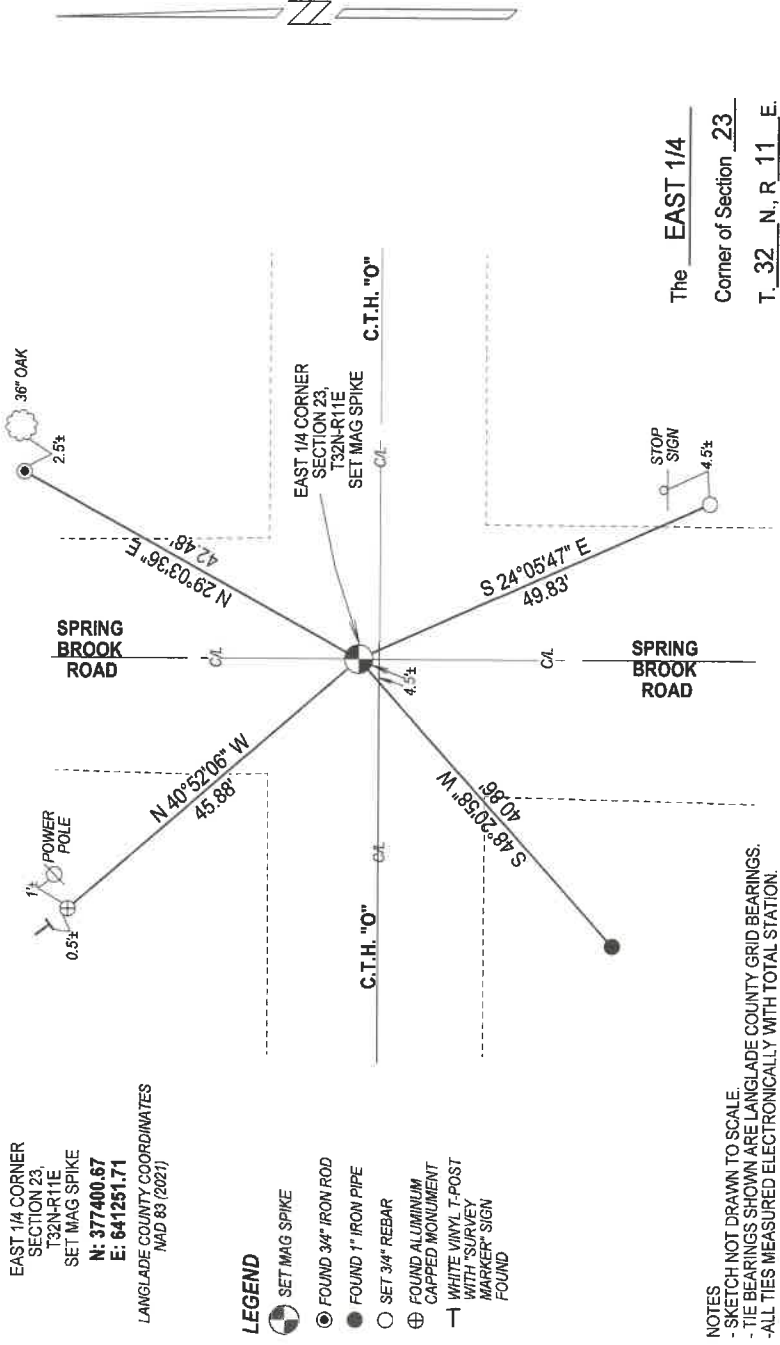
### Describe record evidence, recovered physical evidence, occupational evidence, testimonial evidence, and all other evidence considered in the recovery/restoration of the corner.

1860 - Original corner established by H.C. Fellows - bearing trees: Birch, 8", N30°W, 18 links and a Birch, 14", S50°E, 10 links.  
 1890 - B.F. Dorr surveyed the E-W 1/4 line Section 23, found original US 1/4 post & set new post in the hole of original post.  
 Date unknown - M. Hutchinson described this corner as a stone 10"x14"x22" with "x" on top.  
 1990 - W. Kelly "found PK nail over iron in road C/L intersection."  
 1997 - D. Tlusty dug for corner with backhoe. "Found new rebar under Kelly's nail. Found 10"x14"x? stone with partial chisel mark visible, but part is broken off. Accepted stone as best evidence of perpetuate location or original corner. Kelly's nail is 1.58' SW of stone found." Tlusty set a 3/4"x30" rebar on south edge of stone.  
 2022 - Road construction summer of 2022 destroyed corner location. Prior to construction I found a survey nail marker at the corner location. I reset corner after road construction, verified corner location from existing ties by Tlusty.

### Physical description of the monument set:

Set a mag spike at corner location and tied it out as shown below.

Describe the accessories used to perpetuate the location of the corner. Include a plan view drawing and indicate accessories found/set. Describe measuring point on bearing trees. Show any topographic features that would aid in future recovery of the corner.

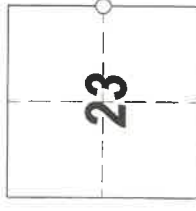


SURVEYORS SEAL



I, Michael J. Hoffman, certify that the corner location shown on this record was determined by me or under my direction and control and that this U.S. Public Land Survey Monument Record is correct and complete to the best of my knowledge and belief.

Michael J. Hoffman 12/12/2022  
 Signature Date



○ = Location of corner

# U.S. PUBLIC LAND SURVEY MONUMENT RECORD

(Prepared and as required by S. A-E 7.08 WI Administrative Code)

The EAST QUARTER corner of Section 23, T. 32 N., R. 11 E., Langlade County, WI

Corner was: (check all that apply)

- Restored through acceptance of an obliterated evidence location.
- Restored through acceptance of a found perpetuated location.
- Determined to be lost and re-established through proportionate methods.  
(Show bearings and distances to PLSS corners used for proportioning.)
- Restored/recovered/reestablished in a location that differs from a previously established position. (Show difference in plan view below.)

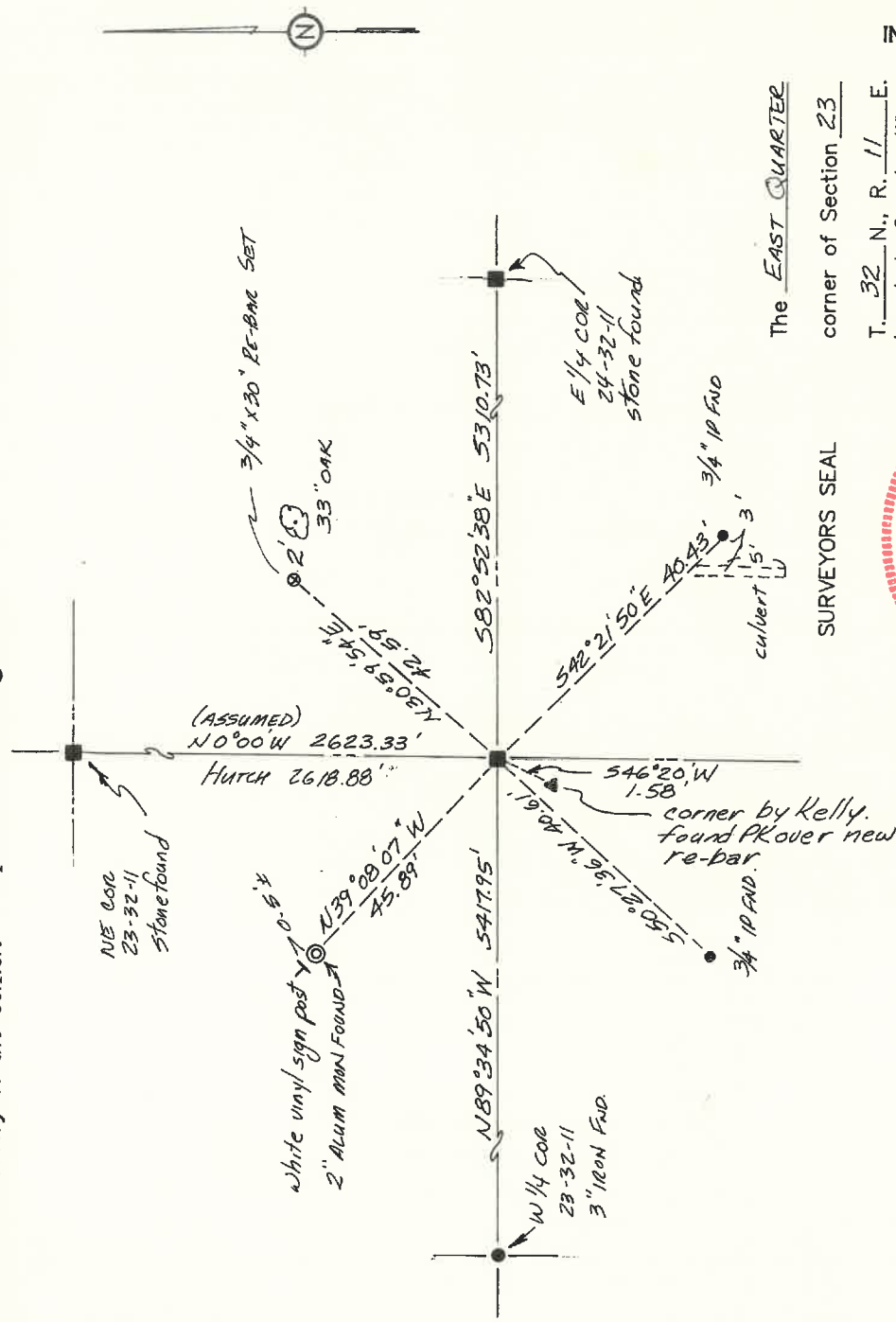
Check here if additional information is shown on the reverse side of this form.

**Describe record evidence, recovered physical evidence, occupational evidence, testimonial evidence and all other evidence considered in the recovery/restoration of the corner.**

The original corner was established in 1860 by Hiram C. Fellows. Original bearing trees: birch, 8", N30°W, 18 lks. and a birch, 14", S50°E, 10 lks. Deleglise (FB144-8) road survey on E-W 1/4 line of Section 23, found orig. US 1/4 post & set new post in the hole of original post. Hutchinson (date unknown) surveyed the line between sections 23 & 24 and described this corner as a stone, 10" x 14" x 22" with + on top. Kelly, 1990, described this corner as "Found in place: PK nail over iron in road CL intersection". 05/14/97 D. Tlusty, T. Wencil dug for corner with backhoe. Found new rebar under Kellys nail. 24" below road, found 10" x 14" x ? stone with partial chisel mark visible, but part is broken off. Accepted stone as best evidence of perpetuated location of original corner. Kellys nail is 1.58 SW of stone found. Measured witness monuments as shown below.

**Physical description of the monument set** 3/4" x 30" re-bar on south edge of stone.

Describe the accessories used to perpetuate the location of the corner. Include a plan view drawing and indicate accessories found/set. Describe measuring point on bearing trees. Show any topographic features that would aid in future recovery of the corner. **Notes FB14-13**



The EAST QUARTER corner of Section 23  
T. 32 N., R. 11 E.  
Langlade County, WI

SURVEYORS SEAL

INDEX No. P21

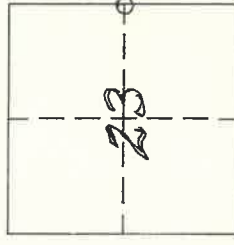


I, DAVID E. TLUSTY, LANGLADE COUNTY SURVEYOR, certify that the corner location shown on this record was determined by me or under my direction and control and that this U.S. Public Land Survey Monument Record is correct and complete to the best of my knowledge and belief.

*David E. Tlusty*  
Date 6/5/97

Signature

Date



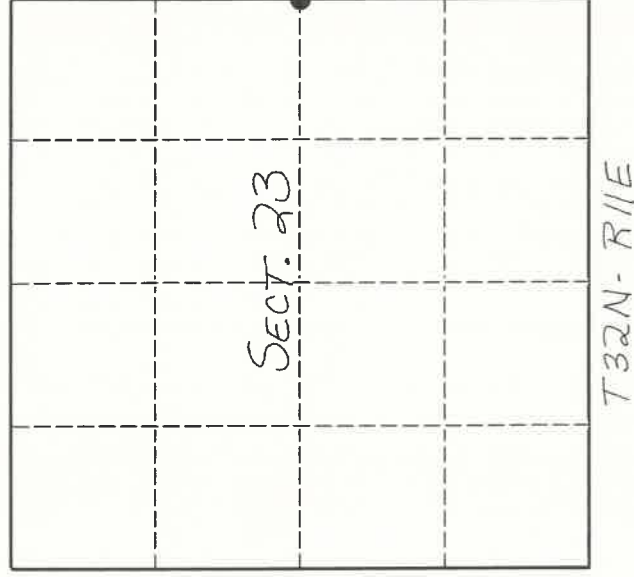
○ = Location of corner

# U. S. PUBLIC LAND SURVEY MONUMENT RECORD

**I N S T R U C T I O N S:**

This record shall show the location of the corner and shall include all of the following nine elements (a through i).

- (a) Identify the corner by reference to the U.S. public land survey system.
- = Corner monument restored.

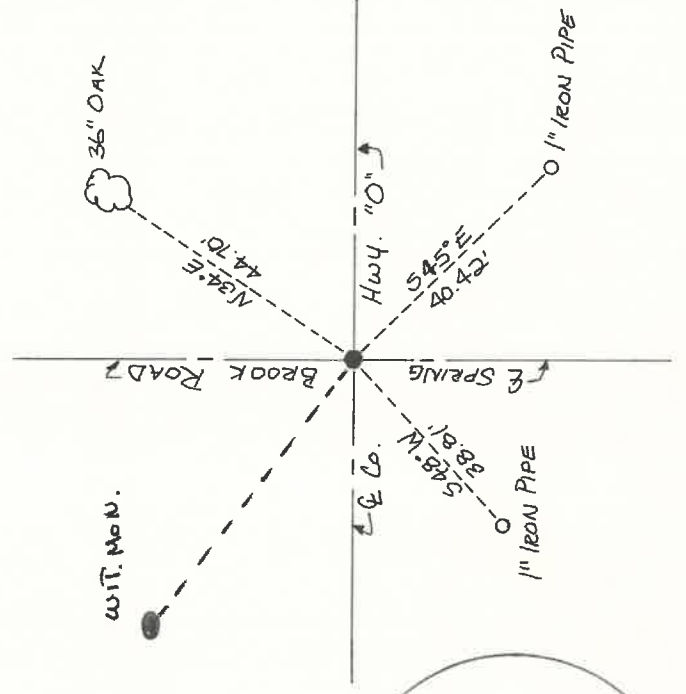


*ORIGINAL CORNER ESTABLISHED  
BY HIRAM C. FELLOWS IN 1860*

- (b) Describe any record evidence, monument evidence, occupational evidence, testimonial evidence or any other material evidence you considered, and whether the monument was found or placed.

*FOUND IN PLACE: PK NAIL OVER IRON IN ROAD @ INTERSECTIONS*

- (c) In the plan view drawing below, provide reference ties to at least 4 witness monuments, or, if the location is within a municipality, to at least 2 witness monuments. (Witness monuments shall be made of concrete, natural stone, iron or other equally durable material.) Describe witness monuments.



LANCEFORD COUNTY  
 T32N R11E  
 WIT. COR.  
 1/4 COR 23-24  
 COR 46'SE  
 W P-14  
 5/4-90

BT:

NAIL IN BASE

2 ALAGUETIC

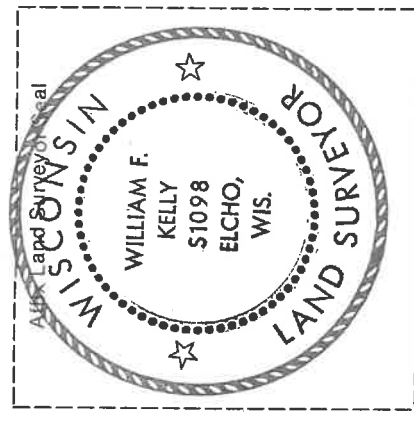
Describe any material discrepancy between the location of the corner as restored or reestablished and the location of that corner as previously restored or reestablished by distance and direction. Show the discrepancy on the plan view drawing under (d), above. Show the distances between the corner as previously restored or reestablished and (1) the corner as restored or reestablished, and (2) to at least 2 of the witness monuments shown on the drawing in (d), above.

NONE

(f) Was the corner restored through acceptance of (1) an obliterated evidence location, or, (2) a found perpetuated location?  
(2)

(g & h) Was the corner reestablished through lost corner proportionate methods? If so, show the method, including the directions and distances to other public land survey corners used as evidence or used for proportioning in determining the corner location.

No



(i) I, WILLIAM F. KELLY (type or print name) R.L.S. 1098

certify that the corner location shown on this record was determined by me or under my direction and control and that this U.S. Public Land Survey Monument Record is correct and complete to the best of my knowledge and belief.

William F. Kelly Signature 3-30-90 Date