

4321122 2000

# U.S. PUBLIC LAND SURVEY MONUMENT RECORD

(Prepared and as required by S. A-E 7.08 WI Administrative Code)

The EAST 1/4 corner of Section 22, T. 32 N., R. 11 E., Langlade County, WI  
 Corner was (check all that apply)

- Restored through acceptance of an obliterated evidence location.
- Restored through acceptance of a found perpetuated location.
- Determined to be lost and re-established through proportionate methods. (show bearings and distances to PLSS corners used for proportioning.)
- Restored/recovered/re-established in a location that differs from a previously established position. (Show difference in plan view below.)
- Check here if additional information is shown on the reverse side of this form.

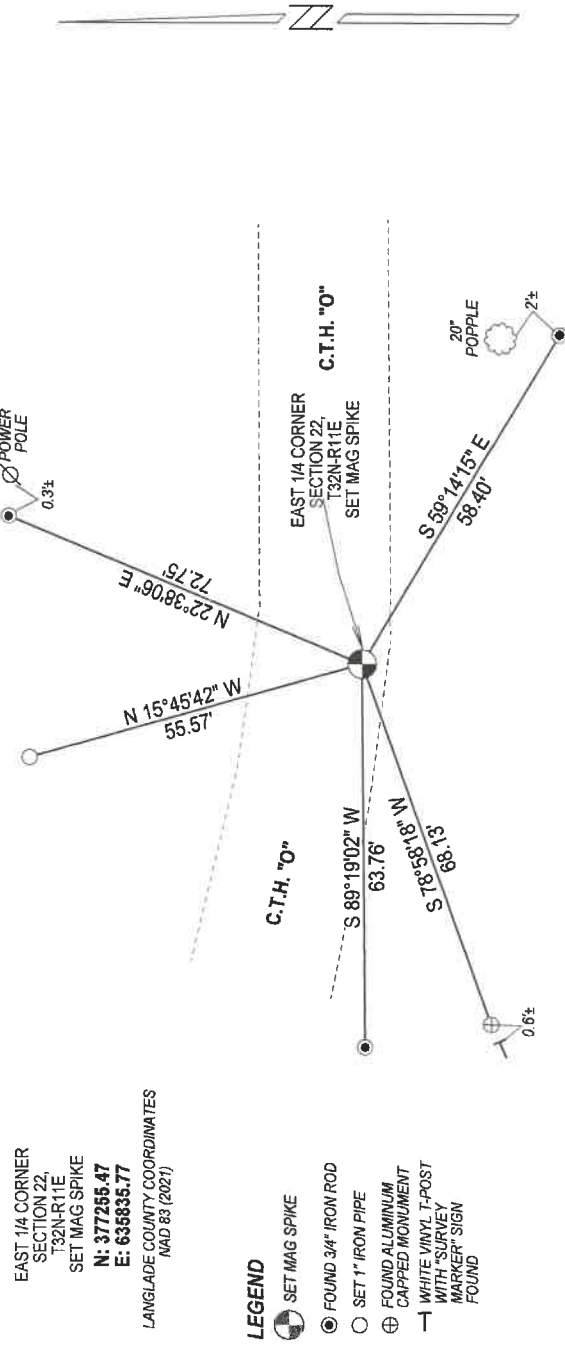
**Describe record evidence, recovered physical evidence, occupational evidence, testimonial evidence, and all other evidence considered in the recovery/restoration of the corner.**

1860 - Original corner established by H.C. Fellows - bearing trees: Lind, 18", S30°W, 9 links and a Hemlock, 24", N70°E, 11 links. Deleglise (FB-144-8) found 1/4 post & marked two new BT's: Sugar, 14", S69°40'E, 20.85' and Sugar, 11", N37°W, 15.32'. 1985 - E. Abendroth stated that an iron bar previously found by Tradewell must have been destroyed during C.T.H. "O" construction because he could not find it. He re-set corner from some Certified Survey and set a railroad spike for the corner. 1997 - D. Tlusty dug for corner with backhoe. "At 37" below road, found a 3" iron pipe upright, in good condition with a flush, plain cap. Accepted this pipe as the best evidence of a previously perpetuated location and measured witness monuments." 2022 - Road construction summer of 2022 destroyed corner location. Prior to construction I found a gear headed spike at the corner location. I reset corner after road construction, verified corner location from existing ties by Tlusty.

**Physical description of the monument set:**

Set a mag spike at corner location and tied it out as shown below.

Describe the accessories used to perpetuate the location of the corner. Include a plan view drawing and indicate accessories found/set. Describe measuring point on bearing trees. Show any topographic features that would aid in future recovery of the corner.



NOTES  
 - SKETCH NOT DRAWN TO SCALE  
 - TIE BEARINGS SHOWN ARE LANGLADE COUNTY GRID BEARINGS.  
 - ALL TIES MEASURED ELECTRONICALLY WITH TOTAL STATION.

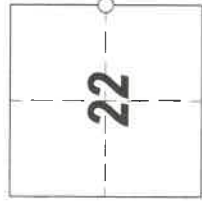
I, Michael J. Hoffman certify that the corner location shown on this record was determined by me or under my direction and control and that this U.S. Public Land Survey Monument Record is correct and complete to the best of my knowledge and belief.

Michael Hoffman 12/12/2022 Date  
 Signature

SURVEYORS SEAL



The EAST 1/4  
 Corner of Section 22  
 T. 32 N., R. 11 E.  
 Langlade County, WI



○ = Location of corner

# U.S. PUBLIC LAND SURVEY MONUMENT RECORD

(Prepared and as required by S. A-E 7.08 WI Administrative Code)

The EAST QUARTER corner of Section 22, T. 32 N., R. 11 E., Langlade County, WI

Corner was: (check all that apply)

- Restored through acceptance of an obliterated evidence location.
- Restored through acceptance of a found perpetuated location.
- Determined to be lost and re-established through proportionate methods.  
(Show bearings and distances to PLSS corners used for proportioning.)
- Restored/recovered/reestablished in a location that differs from a previously established position. (Show difference in plan view below.)
- Check here if additional information is shown on the reverse side of this form.

Describe record evidence, recovered physical evidence, occupational evidence, testimonial evidence and all other evidence considered in the recovery/restoration of the corner.

The original corner was established in 1860 by Hiram C. Fellows. Original bearing trees: lind, 18", S30°W, 9 lks. and a hemlock, 24", N70°E, 11 lks. Deleglise (FB144-8) road survey on E-W 1/4 line of Section 22, found 1/4 post & marked two new BT's: sugar, 14", S69°40'E, 20.85' and a sugar, 11", N37°W, 15.32'. He then continued his road survey East on 1/4 line through Section 23. In 1985, surveyor Ed. Abendroth stated that an iron bar previously found by Tradewell must have been destroyed during C.T.H. "O" construction because he could not find it. He re-set the corner from some Certified Survey and set a RR spike for the corner. 05/14/97 D. Tlusty, T. Wencil dug for corner with backhoe. At 37" below road, found 3" iron pipe upright, in good condition with a flush, plain cap. Accepted this pipe as the best evidence of a previously perpetuated location and measured witness monuments as shown below.

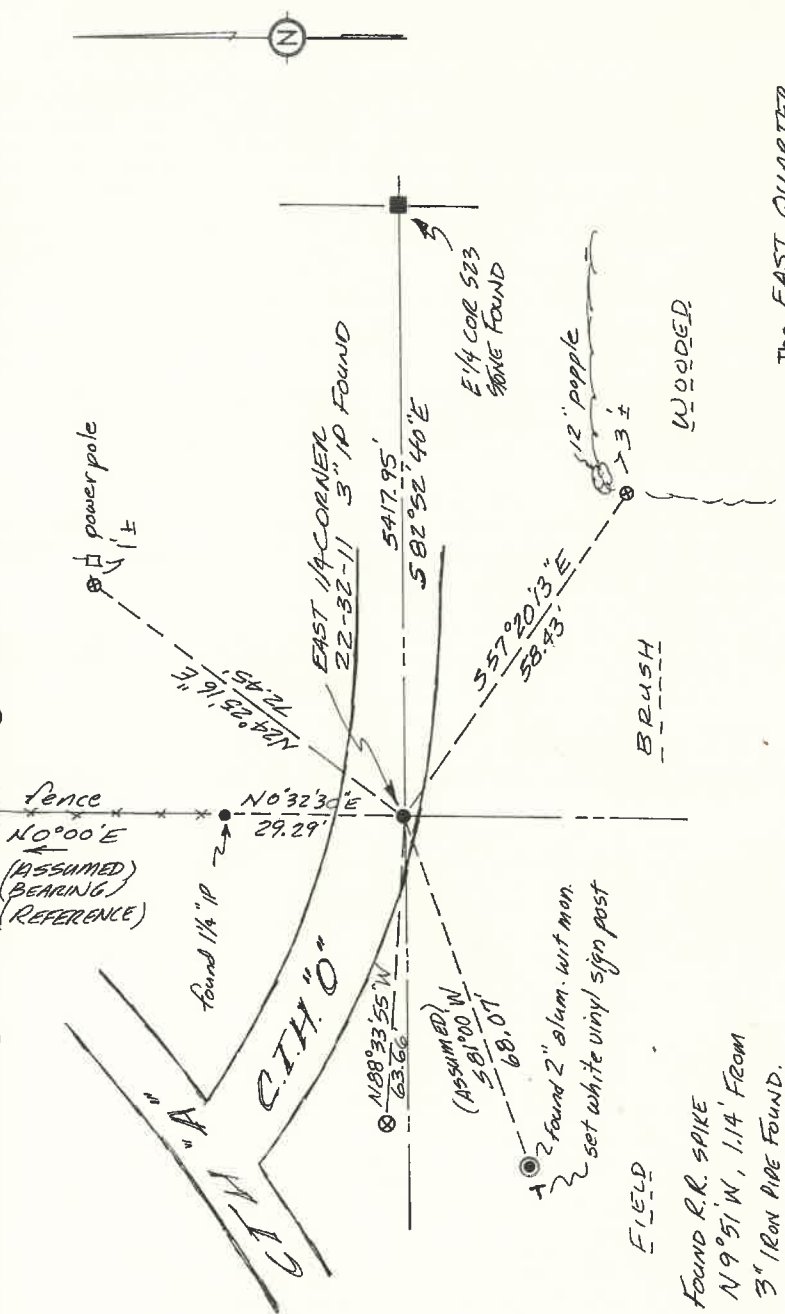
Physical description of the monument set:

For the corner, I left the 3" iron pipe as found.

Describe the accessories used to perpetuate the location of the corner. Include a plan view drawing and indicate accessories found/set. Describe measuring point on bearing trees. Show any topographic features that would aid in future recovery of the corner.

⊗ = 3/4" x 30" rebar with red plastic cap set flush with ground

Notes FB14-17



FIELD  
Found RR SPIKE  
N 9° 51' W, 1.14' FROM  
3" IRON PIPE FOUND.

SURVEYORS SEAL

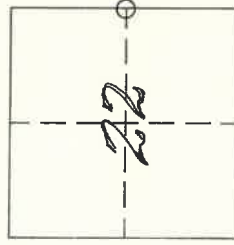


The EAST QUARTER

corner of Section 22

T. 32 N., R. 11 E.  
Langlade County, WI

INDEX No. P17



○ = Location of corner

I, DAVID E. TLUSTY, LANGLADE COUNTY SURVEYOR, certify that the corner location shown on this record was determined by me or under my direction and control and that this U.S. Public Land Survey Monument Record is correct and complete to the best of my knowledge and belief.

David E. Tlusty 6/5/97  
Signature Date

# U. S. PUBLIC LAND SURVEY MONUMENT RECORD

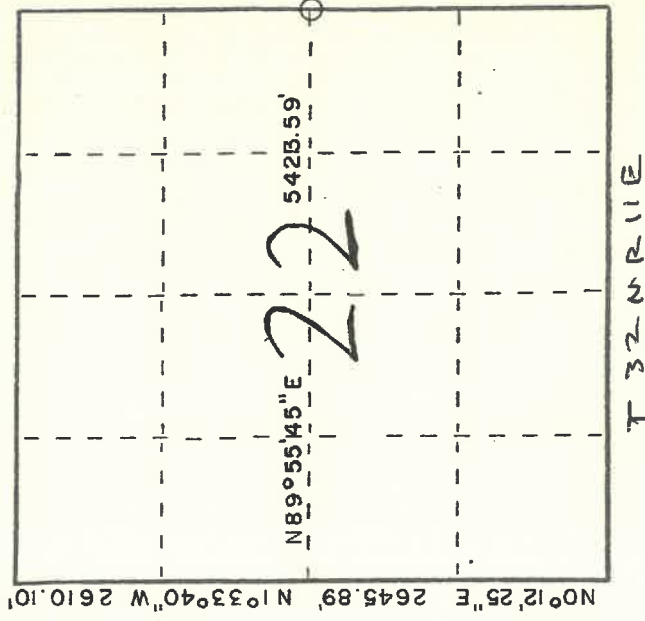
**I N S T R U C T I O N S :**

This record shall show the location of the corner and shall include all of the following nine elements (a through i).

(a) Identify the corner by reference to the U.S. public land survey system.

○ = Corner monument restored.

East  $\frac{1}{4}$  corner Section 22, Township 32 North, Range 11 East, Town of Neva.



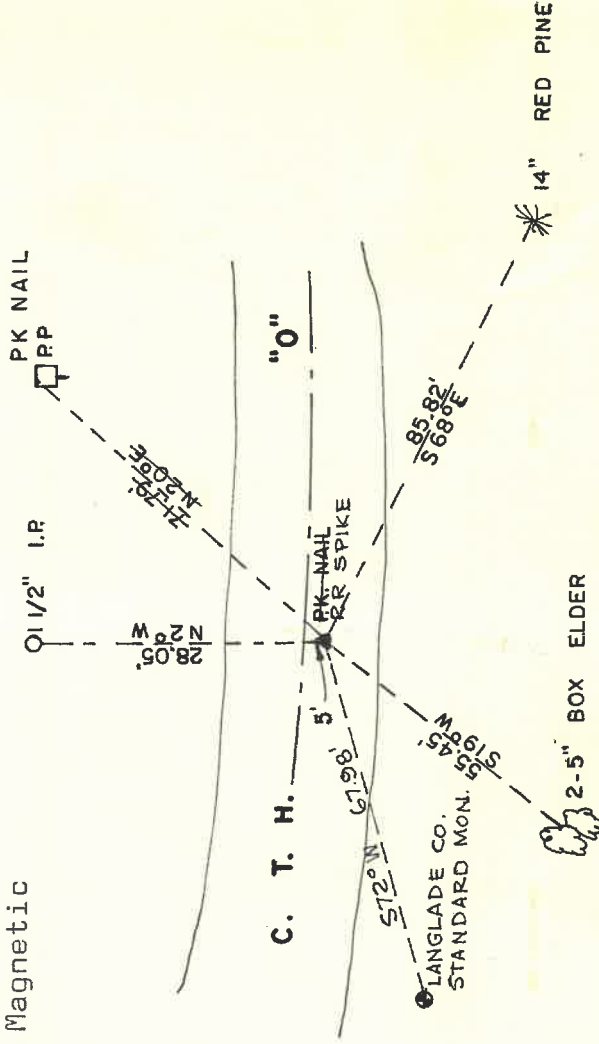
(b) Describe any record evidence, monument evidence, occupational evidence, testimonial evidence or any other material evidence you considered, and whether the monument was found or placed.

Tradewell Eng. found iron bar and accepted as Section corner in the process of preparing a Certified Survey. The corner as found by Tradewell must have been destroyed during C.T.H. "O" Construction. Because we found no evidence of iron bar. Measured from the said Certified Survey record distance and set corner.

(c) In the plan view drawing below, provide reference ties to at least 4 witness monuments, or, if the location is within a municipality, to at least 2 witness monuments. (Witness monuments shall be made of concrete, natural stone, iron or other equally durable material.) Describe witness monuments.

(d) Show a plan view drawing depicting the relevant monuments and reference ties which is sufficient in detail to enable accurate relocation of the corner monument if the corner monument is disturbed. Indicate north.

Bearings given are referenced to Magnetic North.



(e) Describe any material discrepancy between the location of the corner as restored or reestablished and the location of that corner as previously restored or reestablished by distance and direction. Show the discrepancy on the plan view drawing under (d), above. Show the distances between the corner as previously restored or reestablished and (1) the corner as restored or reestablished, and (2) to at least 2 of the witness monuments shown on the drawing in (d), above.

none

(f) Was the corner restored through acceptance of (1) an obliterated evidence location, or, (2) a found perpetuated location?

(1)

(9&h) Was the corner reestablished through lost corner proportionate methods? If so, show the method, including the directions and distances to other public land survey corners used as evidence or used for proportioning in determining the corner location?

no

(1) I, Edwin R. Abendroth  
(Type or print name) certify that the corner location shown on this record was determined by me or under my direction and control and that this U.S. Public Land Survey Monument Record is correct and complete to the best of my knowledge and belief.

Edwin R. Abendroth  
Signature

Mar. 14, 1985  
Date

