

LANGLADE COUNTY U.S. PUBLIC LAND CORNER RESTORATION

The Southeast corner of Section 22, T. 32 N., R. 11 E., Langlade County, WI.

Corner was: (check all that apply)

43211220000

- Restored through acceptance of an obliterated evidence location.
- Restored through acceptance of a found perpetuated location.
- Determined to be lost and re-established through proportionate methods.
- Show bearings and distances to PLSS corners used for proportioning, and show original distances).
- Restored/recovered/re-established in a location that differs from a previously established position.
- (Show difference in plan view below).
- Check here if additional information is shown on the reverse side of this form.

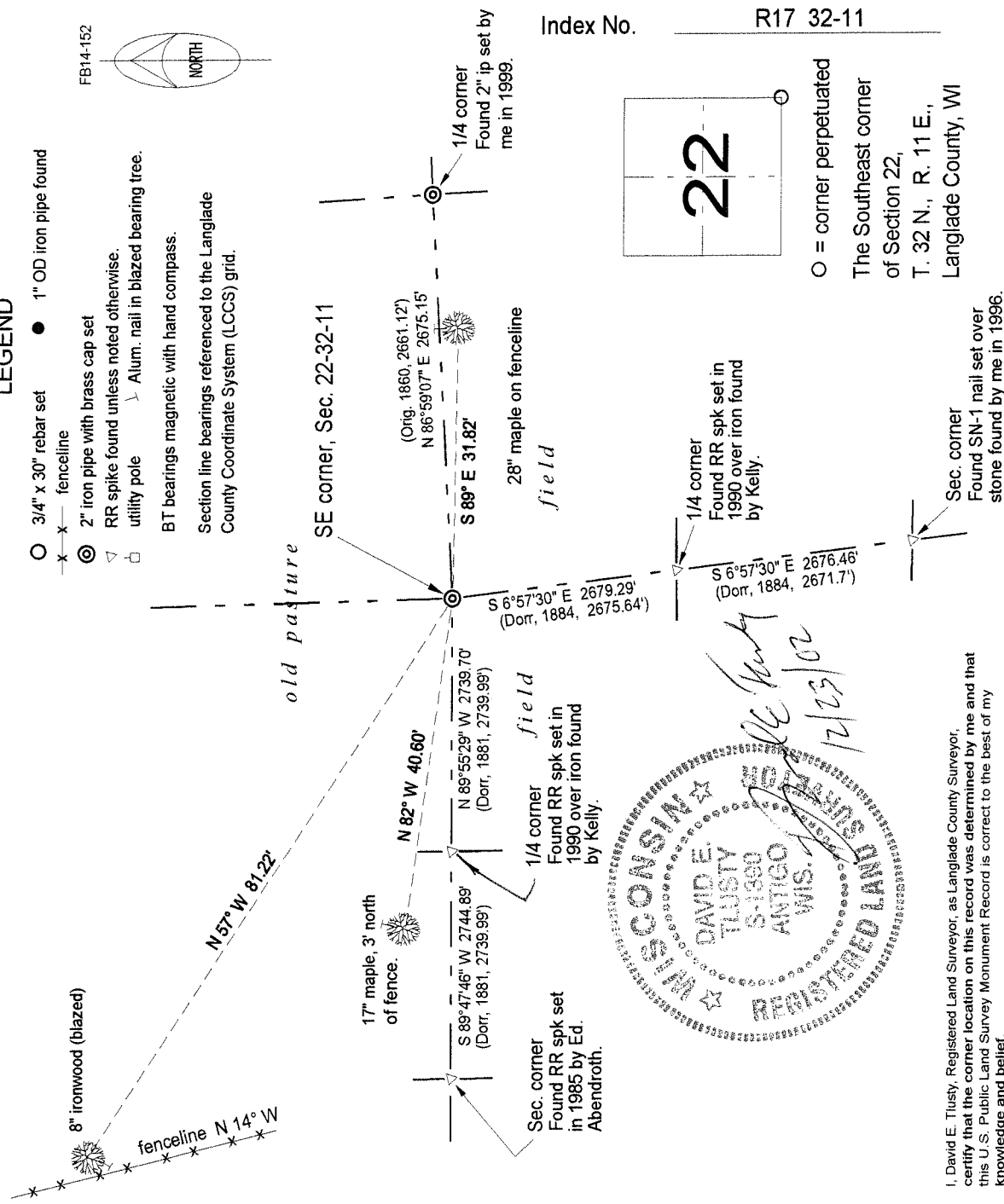
Describe record evidence, recovered physical evidence, occupational evidence, testimonial evidence and all other evidence considered in the recovery/restoration of the corner.

The original corner was established by Hiram C. Fellows in 1860. Original bearing trees were a sugar, 15', N 50° E, 13 links and a sugar, 8", S 30° W, 15 links. In 1881, B.F. Dorr measured the South line of Section 22 as 5479.98' and marked two new maple BT's at this corner. In 1884, Dorr surveyed the East line of Section 27. I find no other record evidence of this corner. To re-establish this corner I projected a line from the SE corner of Section 27 through the East 1/4 corner of Section 27, and intersected said line with an old east-west fenceline. This position works very good with Dorr's section line dimensions. (See sketch below). There is no evidence of Dorr's maple BT's.

Physical description of the monument set:

Set a 2" x 30" galvanized, flared bottom iron pipe with 3 1/4" brass cap, top of which is 0.1' above ground. Set a white vinyl sign post 0.3' north of the corner monument.

Describe the accessories used to perpetuate the corner. Include a plan view drawing and accessories found/set. Describe measuring point on bearing trees. Show any topographic features that would aid in future recovery of the corner.



I, David E. Tlusty, Registered Land Surveyor, as Langlade County Surveyor, certify that the corner location on this record was determined by me and that this U.S. Public Land Survey Monument Record is correct to the best of my knowledge and belief.