

4321121 2000

U.S. PUBLIC LAND SURVEY MONUMENT RECORD

(Prepared and as required by S. A-E 7.08 WI Administrative Code)

The EAST 1/4 corner of Section 21, T. 32 N., R. 11 E., Langlade County, WI
Corner was (check all that apply)

- Restored through acceptance of an obliterated evidence location.
- Restored through acceptance of a found perpetuated location.
- Determined to be lost and re-established through proportionate methods. (show bearings and distances to PLSS corners used for proportioning.)
- Restored/recovered/re-established in a location that differs from a previously established position. (Show difference in plan view below.)
- Check here if additional information is shown on the reverse side of this form.

Describe record evidence, recovered physical evidence, occupational evidence, testimonial evidence, and all other evidence considered in the recovery/restoration of the corner.

1860 - Original corner established by H.C. Fellows - bearing trees: Maple, 10", N27°W, 10 links and a Lind, 10", S9°E, 21 links.

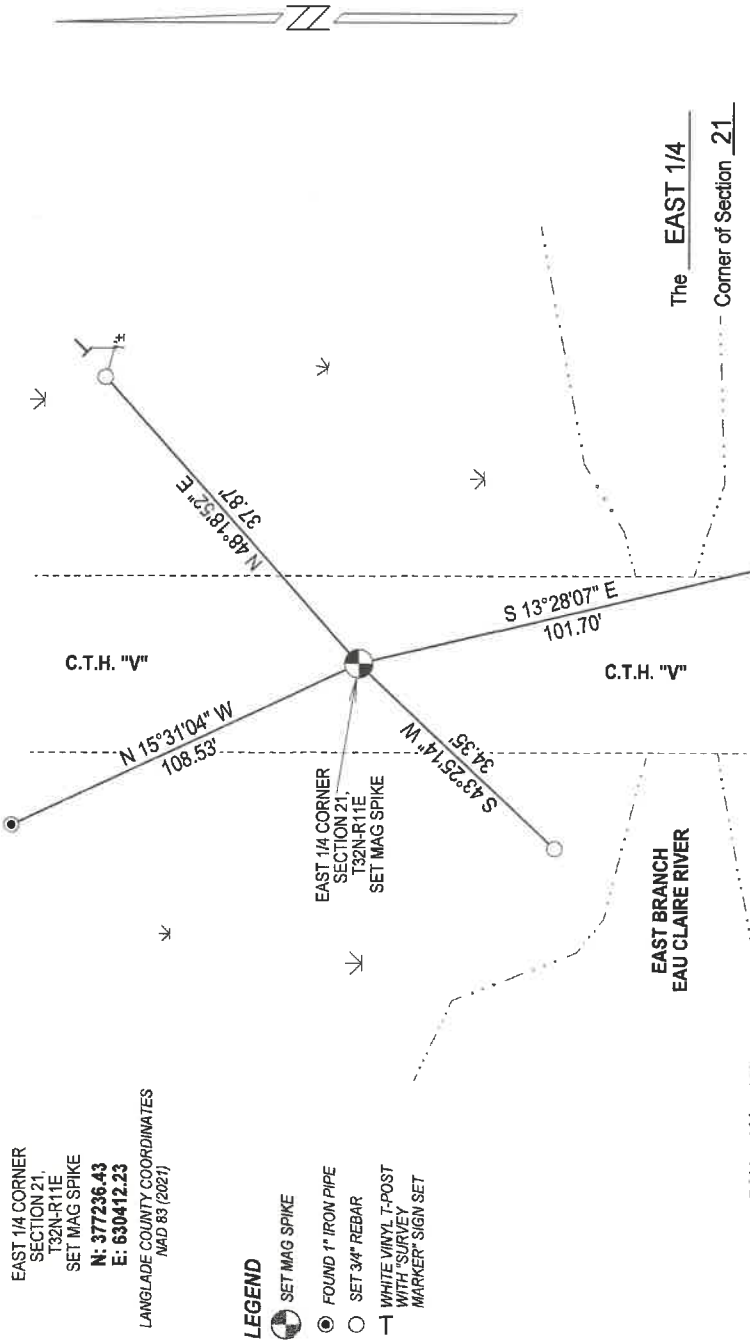
1985 - E. Abendroth found no record evidence or corner. Traversed to NW and SW corners of Section. Also used 40 lines to determine corner location. Set railroad spike in pavement.

2022 - Road construction summer of 2022 destroyed corner location. Prior to construction I found the railroad spike at the corner location. I reset corner after road construction.

Physical description of the monument set:

Set a mag spike at corner location and tied it out as shown below.

Describe the accessories used to perpetuate the location of the corner. Include a plan view drawing and indicate accessories found/set. Describe measuring point on bearing trees. Show any topographic features that would aid in future recovery of the corner.

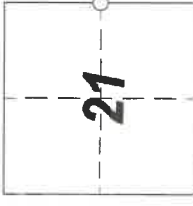


NOTES
 - SKETCH NOT DRAWN TO SCALE.
 - TIE BEARINGS SHOWN ARE LANGLADE COUNTY GRID BEARINGS.
 - ALL TIES MEASURED ELECTRONICALLY WITH TOTAL STATION.



I, Michael J. Hoffman, certify that the corner location shown on this record was determined by me or under my direction and control and that this U.S. Public Land Survey Monument Record is correct and complete to the best of my knowledge and belief.

Michael Hoffman 12/12/2022
 Signature Date



○ = Location of corner

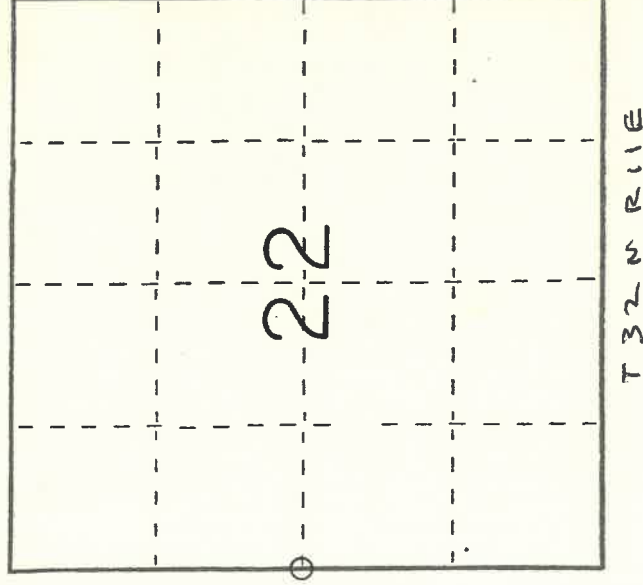
U. S. PUBLIC LAND SURVEY MONUMENT RECORD

I N S T R U C T I O N S : This record shall show the location of the corner and shall include all of the following nine elements (a through i).

(a) Identify the corner by reference to the U.S. public land survey system.

○ = Corner monument restored.

West $\frac{1}{4}$ corner of Section 22,
Township 32 North, Range 11 East,
Town of Neva.



(b) Describe any record evidence, monument evidence, occupational evidence, testimonial evidence or any other material evidence you considered, and whether the monument was found or placed.

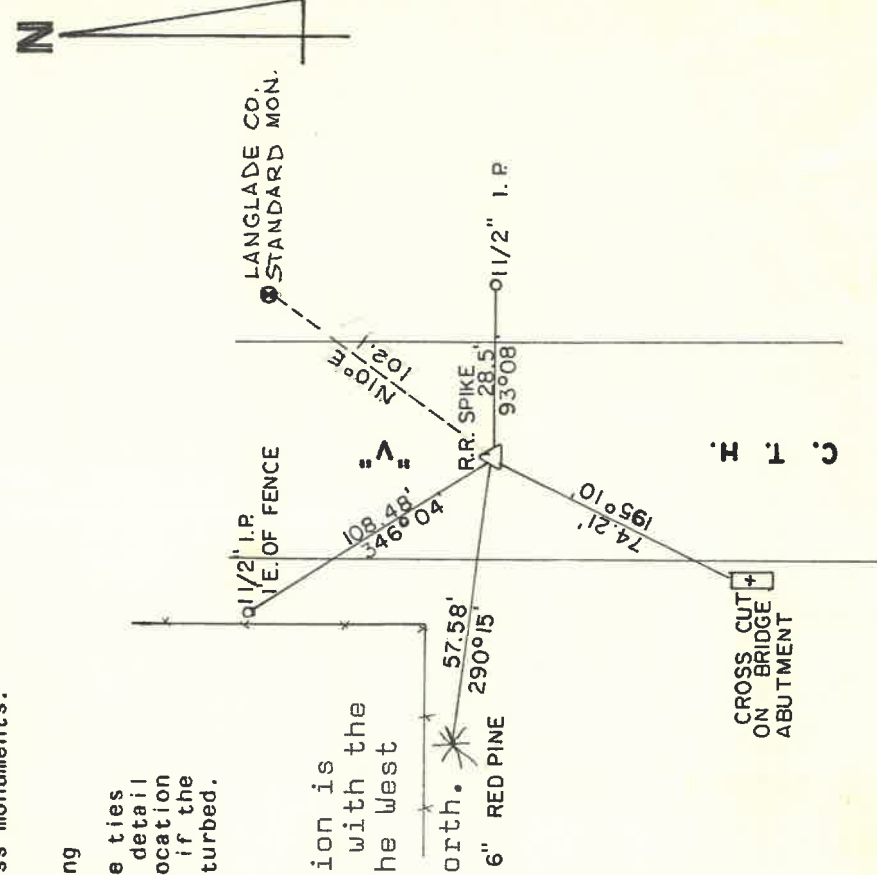
Found no record evidence. Traversed to northwest corner and southwest corner of section. Also used forty lines to determine corner location. Forty fence lines were decided to be the best material evidence. Set railroad spike in pavement.

12/8/99 AREA REINVEST. RLS. REPORTED "ALL TIES WERE FOUND AS SHOWN" D.T.

(c) In the plan view drawing below, provide reference ties to at least 4 witness monuments, or, if the location is within a municipality, to at least 2 witness monuments. (Witness monuments shall be made of concrete, natural stone, iron or other equally durable material.) Describe witness monuments.

(d) Show a plan view drawing depicting the relevant monuments and reference ties which is sufficient in detail to enable accurate relocation of the corner monument if the corner monument is disturbed. Indicate north.

Note: Line direction is given in Azimuths with the reference being the West
Line of the NW $\frac{1}{4}$ assumed bearing North.



(e) Describe any material discrepancy between the location of the corner as restored or reestablished and the location of that corner as previously restored or reestablished by distance and direction. Show the discrepancy on the plan view drawing under (d), above. Show the distances between the corner as previously restored or reestablished and (1) the corner as restored or reestablished, and (2) to at least 2 of the witness monuments shown on the drawing in (d), above.

none

(f) Was the corner restored through acceptance of (1) an obliterated evidence location, or, (2) a found perpetuated location?

(1)

(g&h) Was the corner reestablished through lost corner proportionate methods? If so, show the method, including the directions and distances to other public land survey corners used as evidence or used for proportioning in determining the corner location?

(no)

(i) I, Edwin R. Abendroth
(type or print name) certify that the corner location shown on this record was determined by me or under my direction and control and that this U.S. Public Land Survey Monument Record is correct and complete to the best of my knowledge and belief.

Edwin R. Abendroth
Signature

Mar. 11, 1985
Date

