

# LANGLADE COUNTY U.S. PUBLIC LAND CORNER RESTORATION

The South 1/4 corner of Section 21, T. 32 N., R. 11 E., Langlade County, WI.

3211210020

**Corner was: (check all that apply)**

- Restored through acceptance of an obliterated evidence location.
- Restored through acceptance of a found perpetuated location.
- Determined to be lost and re-established through proportionate methods.
- Show bearings and distances to PLSS corners used for proportioning, and show original distances).
- Restored/recovered/re-established in a location that differs from a previously established position.
- (Show difference in plan view below).
- Check here if addition information is shown on the reverse side of this form.

**Describe record evidence, recovered physical evidence, occupational evidence, testimonial evidence and all other evidence considered in the recovery/restoration of the corner.**

The original corner was established in 1860 by Hiram Fellows. Original BT's: birch, 12", S57°W, 34 links and a sugar, 10", N20°E, 18 links. In 1903, Webley surveyed the N-S 1/4 line in Section 28 and for this corner, set a 6" x 8" x 18" stone with cross on top. In 1990, former surveyor Kelly "set PK nail over existing iron in road". He marked two BT's and set an iron pipe witness S33°W, 81.08' and an alum. witness monument SE, 46'. 06/30/98 Dave Tlusty, Mike Kielcheski and Marty Mitas dug with a backhoe. Down 2.7" at the center of the intersection, found a 6" x 8" stone with a chiseled + on top. Accepted the stone as the best evidence of the original corner.

**Physical description of the monument set:**

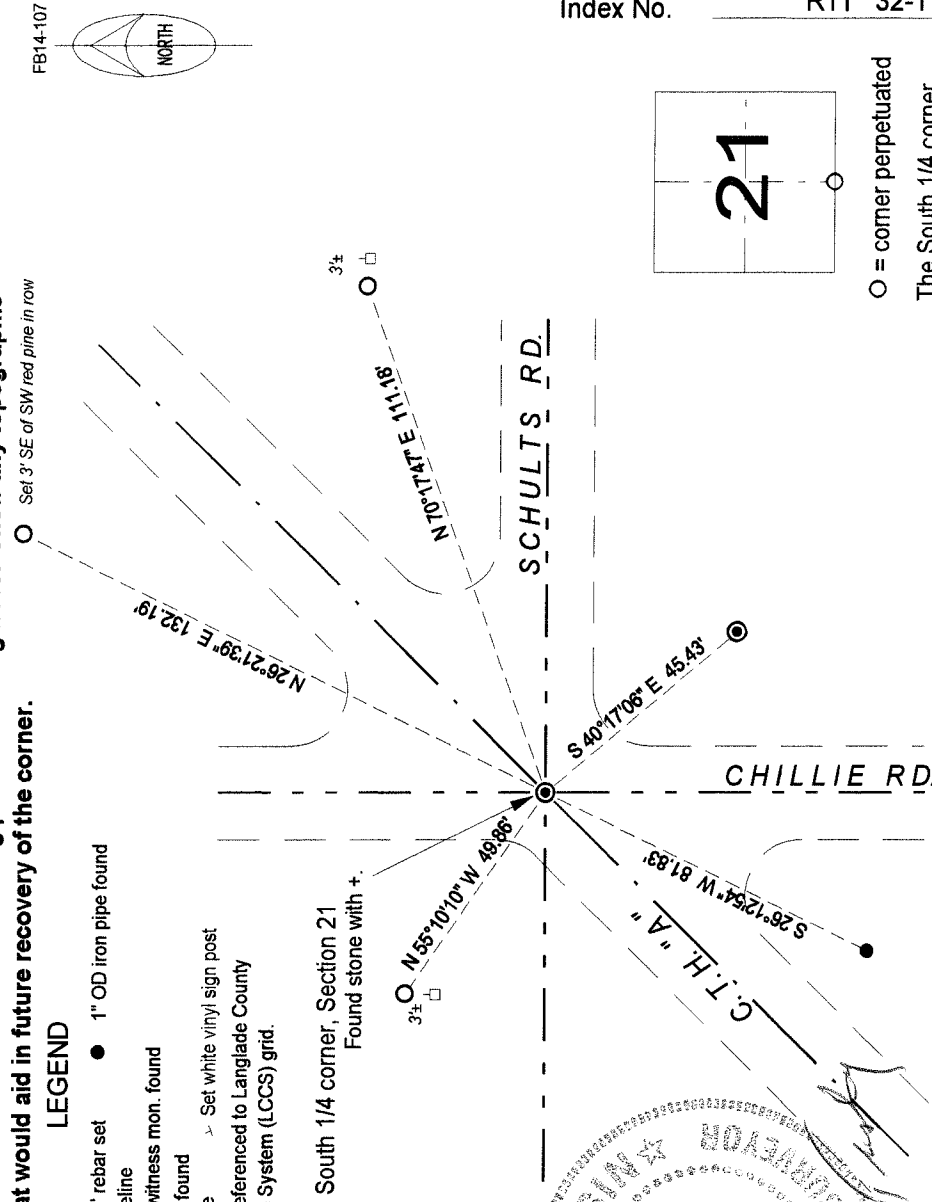
Set a 1" x 30" iron pipe on the north edge of the existing stone.  
Kellys corner falls S 77°09'56" W, 1.16' from stone monument found.

**Describe the accessories used to perpetuate the corner. Include a plan view drawing and accessories found/set. Describe measuring point on bearing trees. Show any topographic features that would aid in future recovery of the corner.**

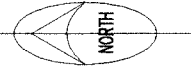
**LEGEND**

- 3/4" x 30" rebar set
  - 1" OD iron pipe found
  - x - x - fenceline
  - 2" alum. witness mon. found
  - ▽ RR spike found
  - utility pole
  - Set white vinyl sign post
- Bearings referenced to Langlade County  
Coordinate System (LCCS) grid.

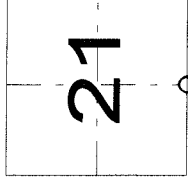
South 1/4 corner, Section 21  
Found stone with +.



FB14-107



*David E. Tlusty*  
2/20/02



○ = corner perpetuated

The South 1/4 corner  
of Section 21,  
T. 32 N., R. 11 E.,  
Langlade County, WI

Index No. \_\_\_\_\_

R11 32-11

I, David E. Tlusty, Registered Land Surveyor, as Langlade County Surveyor, certify that the corner location on this record was determined by me and that this U.S. Public Land Survey Monument Record is correct to the best of my knowledge and belief.