

# LANGLADE COUNTY U.S. PUBLIC LAND CORNER RESTORATION

The East 1/4 corner of Section 20, T. 32 N., R. 11 E., Langlade County, WI.

**Corner was: (check all that apply)**

- Restored through acceptance of an obliterated evidence location.
- Restored through acceptance of a found perpetuated location.
- Determined to be lost and re-established through proportionate methods.
- Show bearings and distances to PLSS corners used for proportioning, and show original distances).
- Restored/recovered/re-established in a location that differs from a previously established position.
- (Show difference in plan view below).
- Check here if additional information is shown on the reverse side of this form.

3211202000

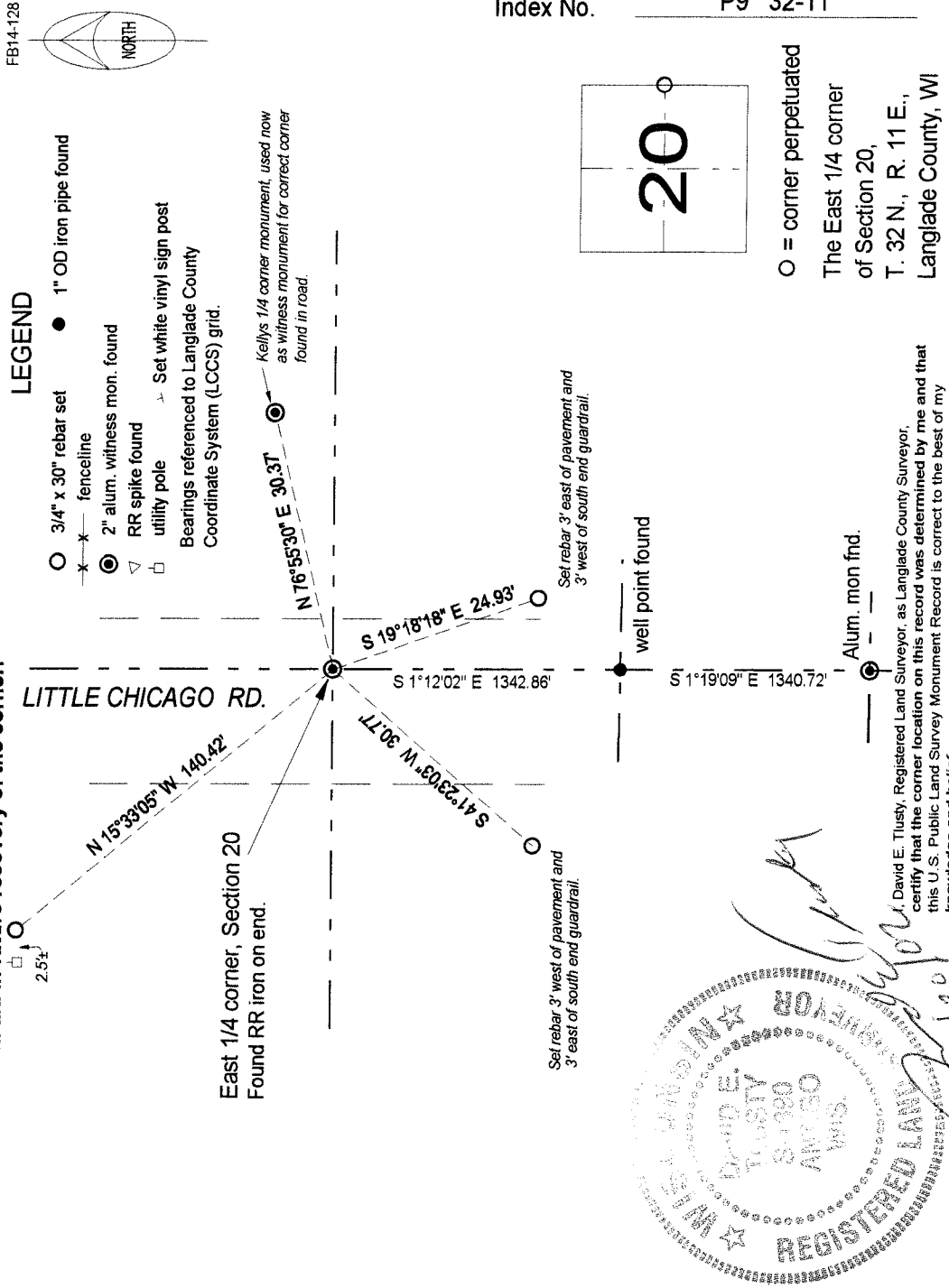
**Describe record evidence, recovered physical evidence, occupational evidence, testimonial evidence and all other evidence considered in the recovery/restoration of the corner.**

The original corner was established in 1860 by Hiram Fellows. Original notes indicate that this corner fell in the river. In 1908, E.S. Brooks set 1/4 post in river, set RR rail, 4.5' long marked 1/4 S. In 1980, former surveyor Kelly "set monument at midpoint on W. sect. line. No evidence of corner found". July, 1998, D. Tlusty, D. Williams traversed from SE corner of Section 20, north through an old well point that the adjoining landowner, Hackbarth, said was the "40" corner. Extended this line north for search area for 1/4 corner. At 4.5' down in the road, found the top of an upright RR rail. It appears to be in good condition. Accepted it as the RR rail set by Brooks, and as the best evidence of the corner location. It is obvious that there is much fill here and that the river probably did flow here at one time.

**Physical description of the monument set:**

Set 1 1/4" x 30" iron pipe with 4" brass cap, flush with road, over RR rail found.

**Describe the accessories used to perpetuate the corner. Include a plan view drawing and accessories found/set. Describe measuring point on bearing trees. Show any topographic features that would aid in future recovery of the corner.**



David E. Tlusty, Registered Land Surveyor, as Langlade County Surveyor, certify that the corner location on this record was determined by me and that this U.S. Public Land Survey Monument Record is correct to the best of my knowledge and belief.

