

# LANGLADE COUNTY U.S. PUBLIC LAND CORNER RESTORATION

The South 1/4 corner of Section 20, T. 32 N., R. 11 E., Langlade County, WI.

**Corner was: (check all that apply)**

- Restored through acceptance of an obliterated evidence location.
- Restored through acceptance of a found perpetuated location.
- Determined to be lost and re-established through proportionate methods.
- Show bearings and distances to PLSS corners used for proportioning, and show original distances).
- Restored/recovered/re-established in a location that differs from a previously established position.
- (Show difference in plan view below).
- Check here if additional information is shown on the reverse side of this form.

43211200020

**Describe record evidence, recovered physical evidence, occupational evidence, testimonial evidence and all other evidence considered in the recovery/restoration of the corner.**

The original corner was established in 1860, by Hiram Fellows. Original bearing trees: hemlock, 8", N 50° E, 14 links and a sugar, 10", S 33° W, 12 links. In 1914, Brooks surveyed the N-S 1/4 line in Section 29 and called for a stone at this corner. Brooks quarter line distance in Sec. 29 = 5325.21'. In 1987, former surveyor Kelly "located buggy axel called for in old Co. Surveyor notes. Set 1 1/2" I.P. over axel. Set wit. monuments". 06/21/04 D. Tlusty measured short ties to existing iron pipe. Removed pipe and got good reading with metal detector. At 2.5' below the pipe, found the old axle that Kelly mentioned. Dug further, found no evidence of the stone mentioned by Brooks. Could find no evidence in the County Surveyor records that mentioned the axle, but it is obviously very old and other old axles have been found to mark corners, and the distance to the South 1/4 corner of Section 29 agrees within reason with Brooks' distance; therefore I accept the location of the axle found as the best evidence of the original corner location.

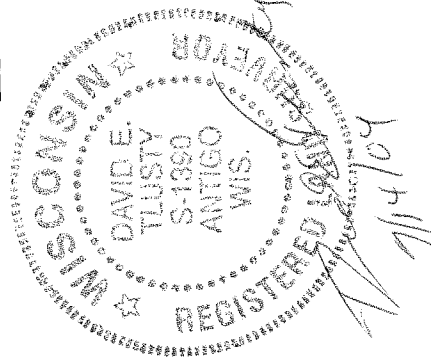
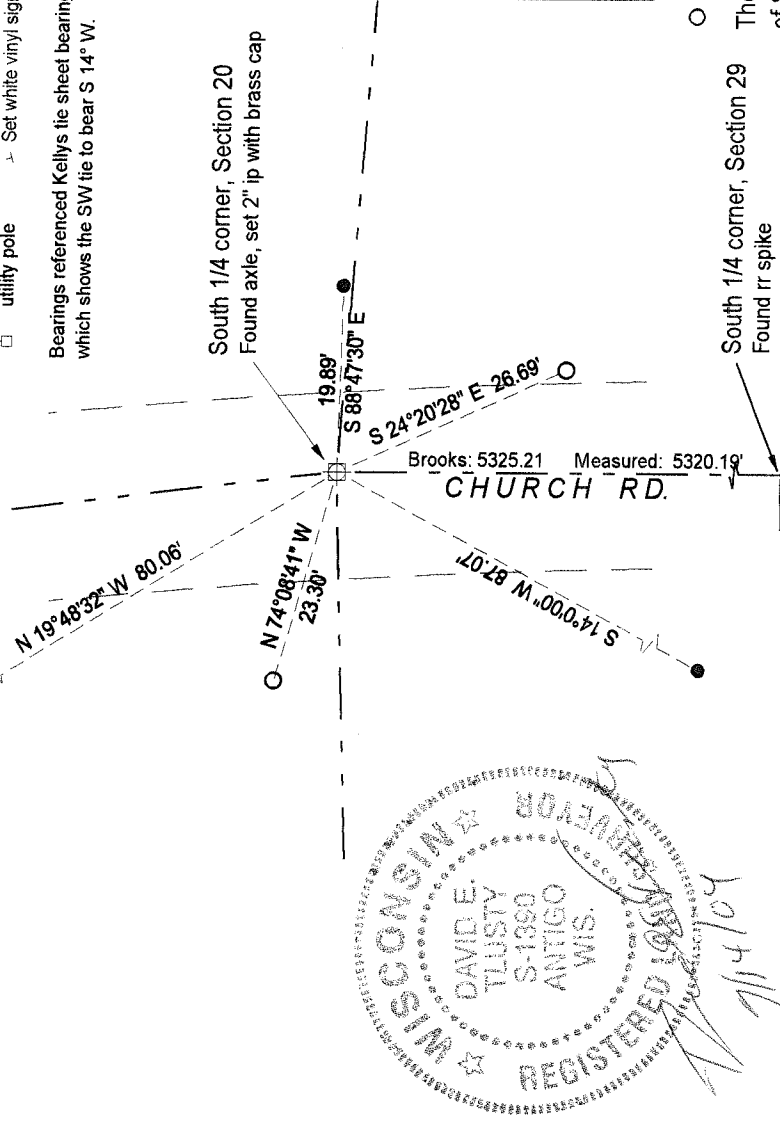
**Physical description of the monument set:**

In place of the existing axle I set a Berntsen "Deep 1" magnet (1" x 1" x 2.6") 39" below the road surface. Over the magnet, I set a 2" (ID) x 30" galvanized iron pipe with a 3 1/4" brass cap, top of which is 7" below the road surface. I re-set the old axle on the west edge of the new pipe set.

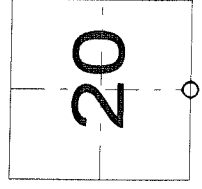
**Describe the accessories used to perpetuate the corner. Include a plan view drawing and accessories found/set. Describe measuring point on bearing trees. Show any topographic features that would aid in future recovery of the corner.**

*Brooks, FB 94-73, 1910  
N-S 1/4 LINE 29 @ 5311.02'  
DT. 11/16/09*

- LEGEND**
- 3/4" x 30" rebar set ● 1" OD iron pipe found
  - x — x — fenceline
  - ⊙ 2" alum. witness mon. found
  - ▽ RR spike found
  - utility pole → Set white vinyl sign post
- Bearings referenced Kelly's tie sheet bearings which shows the SW tie to bear S 14° W.



Index No.                      R7 32-11



○ = corner perpetuated  
The South 1/4 corner of Section 20, T. 32 N., R. 11 E., Langlade County, WI

South 1/4 corner, Section 29  
Found rr spike

I, David E. Tlusty, Registered Land Surveyor, as Langlade County Surveyor, certify that the corner location on this record was determined by me and that this U.S. Public Land Survey Monument Record is correct to the best of my knowledge and belief.