

LANGLADE COUNTY U.S. PUBLIC LAND CORNER RESTORATION

The Southeast corner of Section 19, T. 32 N., R. 11 E., Langlade County, WI.

Corner was: (check all that apply)

- Restored through acceptance of an obliterated evidence location.
- Restored through acceptance of a found perpetuated location.
- Determined to be lost and re-established through proportionate methods.
- Show bearings and distances to PLSS corners used for proportioning, and show original distances).
- Restored/recovered/re-established in a location that differs from a previously established position.
- (Show difference in plan view below).
- Check here if additional information is shown on the reverse side of this form.

43211190000

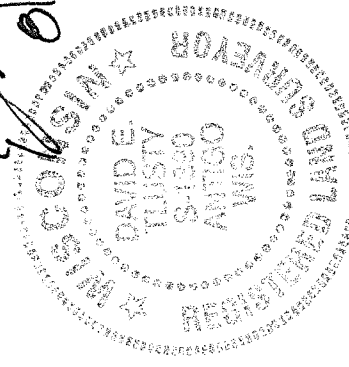
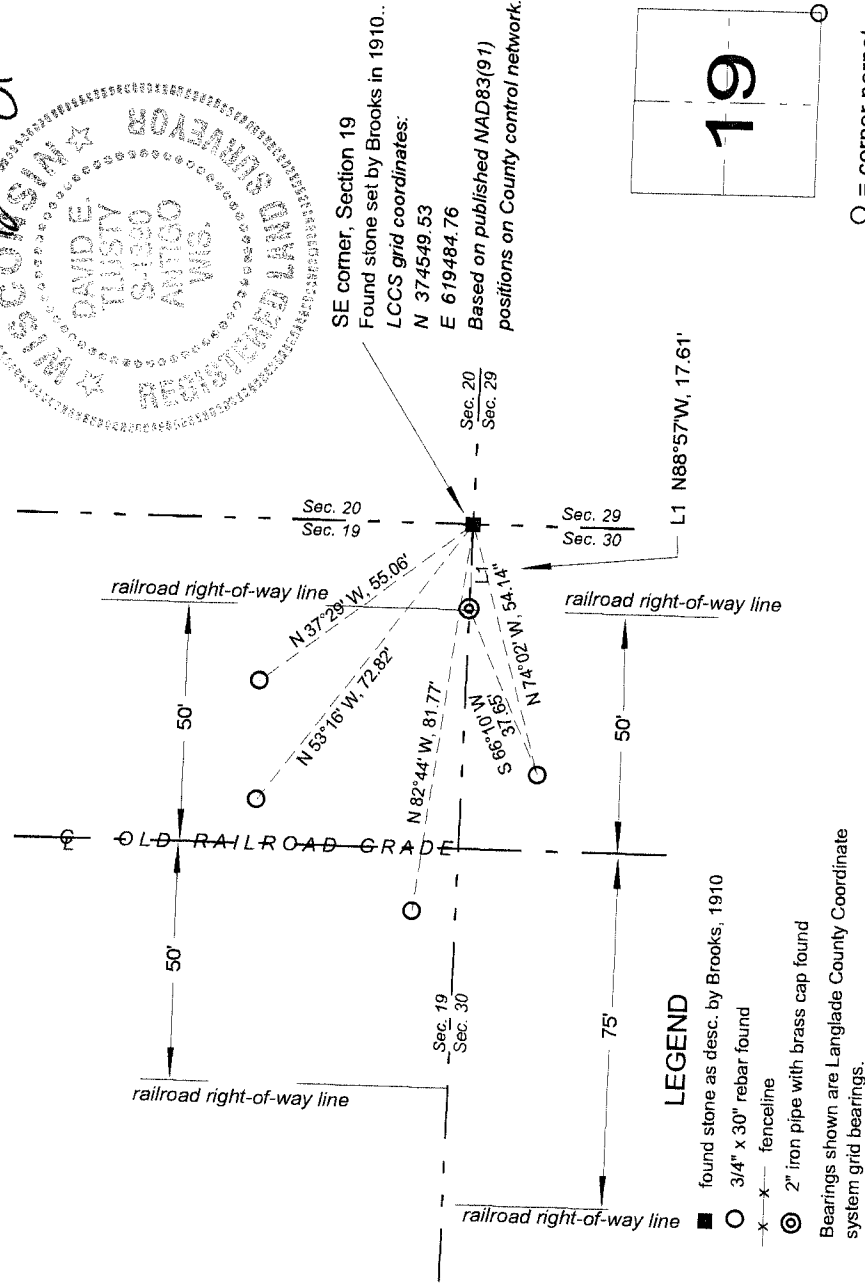
Describe record evidence, recovered physical evidence, occupational evidence, testimonial evidence and all other evidence considered in the recovery/restoration of the corner.

History on reverse side.

Physical description of the monument set:

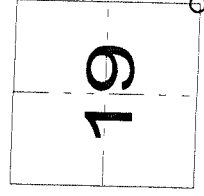
- I replaced the stone with a 1 1/4" x 48" iron pipe with brass cap.
- I set a white vinyl sign post 0.8' north of the monument set.
- I laid the found stone on the ground on the south edge of the monument set.

Describe the accessories used to perpetuate the corner. Include a plan view drawing and accessories found/set. Describe measuring point on bearing trees. Show any topographic features that would aid in future recovery of the corner.



SE corner, Section 19
Found stone set by Brooks in 1910.
LCCS grid coordinates:
N 374549.53
E 619484.76
Based on published NAD83(91)
positions on County control network.

Index No. R5 32-11



○ = corner perpetuated
The Southeast corner
of Section 19,
T. 32 N., R. 11 E.,
Langlade County, WI

I, David E. Trusty, Registered Land Surveyor, as Langlade County Surveyor, certify that the corner location on this record was determined by me and that this U.S. Public Land Survey Monument Record is correct to the best of my knowledge and belief.

LANGLADE COUNTY U.S. PUBLIC LAND CORNER RESTORATION

The Southeast corner of Section 19, T.32N., R.11 E., Langlade County, WI

Corner history:

- 1860 The original corner was established by Hiram Fellows, Deputy Surveyor. Original bearing trees marked: spruce, 12, N72°W, 15 links and a birch, 10", N14°E, 7 links.
- 1878 Deleglise noted the original BT's and bearings to them: Spruce, 17", N82°W and Birch, 10", N 6 ½°E.
- 1887 B. F. Dorr, on the plat of the Village of Neva found remains of both original BT's: His distance from the corner west to the railroad r/w line is 17.65 feet.
- 1910 E. S. Brooks, County Surveyor found old stake and pine stump, 18", S56°W, 32 ½ links. Set limestone 5 x 6 x 20 + on top.
- 19?? Dates unknown but a railroad right-of-way map (40413) shows the corner as 50 feet from the center of the railroad (at the right-of-way line) while a second railroad right-of-way map (20096) shows the corner as 72 feet from the center of the railroad (22 feet from the right-of-way line).
- 1980 Former surveyor Kelly mentions the original government survey information and then said: " Corner re-established from Chicago NW railroad R/W. Set 2" x 42" black iron pipe with brass cap monument"
- 2008 D. Tlusty, Tim Rusch. After confirming the North-South location by measuring from the ¼ corner to the South and finding an old, downed fenceline east, we searched for the Brooks 1910 limestone. Found it frost heaved and partially exposed under a 7" ash tree, approx 17 feet from RR right of way line as stated by Dorr. Removed tree and stump, tipped the stone to a straightened position to see the partial chiseled + on top, then replaced stone with an iron pipe with brass cap. Found no evidence of a wood post point. Kelly apparently used one of the bogus railroad maps to establish the corner and didn't make use of the existing recorded plat (Neva) or the old survey notes filed with the county. I found his monument 17.61 feet west of the recovered stone of record.

