

CERTIFIED LAND CORNER RESTORATION

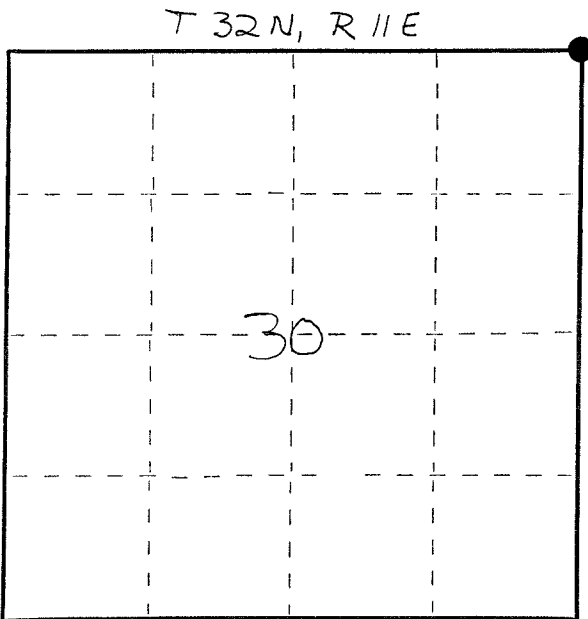
Index No. R-5

State of Wisconsin }
County of LANGLADE } ss.

I WILLIAM F. KELLY, do hereby certify that on the 25th day of AUGUST, 1980, I found evidence of the NW corner of SEC. 30 Township 32, North, Range 11 E, Fourth Principal Meridian, as described hereon; and that from this evidence I established a new monument and accessories as described hereon to perpetuate the original location of this corner.

Resident witnesses:

.....
.....
.....



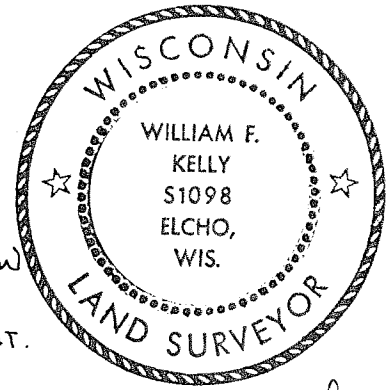
○ = Corner monument restored.

History of original corner establishment:

ORIGINAL CORNER ESTABLISHED BY HIRAM C. FELLOWS IN SEPT. OF 1860.

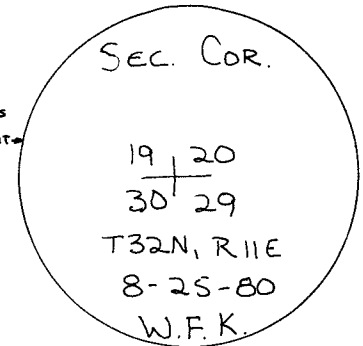
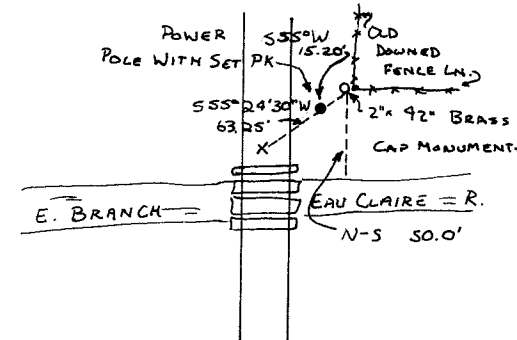
Description of corner evidence found:

CORNER RE-ESTABLISHED FROM CHICAGO NW RAILROAD R/W
SET 2" x 42" BLACK IRON PIPE WITH BRASS CAP MONUMENT.



William F. Kelly

Description of monument and accessories I established to perpetuate the original location of this corner.



Dated at ELCHO, Wis., this 25th day of AUGUST, 1980.

Signature William F. Kelly Title COUNTY SURVEYOR Registration No. 1098
(County Surveyor, Registered Land Surveyor, or other duly authorized official)

Office of Register of Deeds, County of....., I hereby certify that the within instrument was filed in this office for record on the..... day of....., 19..... at..... o'clock..... M.

.....
(Register of Deeds)

By..... Deputy

FORM 985 H. C. MILLER CO., MILWAUKEE