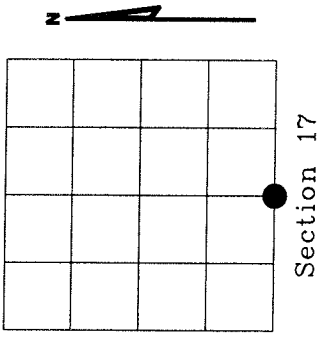


4321170020

U.S. PUBLIC LAND SURVEY MONUMENT RECORD

NOTE: This form is intended and designed to fulfill all requirements of Wisconsin Administrative Code, Chapter A-E 7.08 U.S. Public Land Survey Monument Record (3)(a)(b)(c)(d)(e)(f)(g)(h)(i). An additional sheet may be added if necessary to conform with said requirements.

(a) Corner location: Township 32 North
 Range 11 East
 Town of NEVA, LANGLADE County, Wisconsin



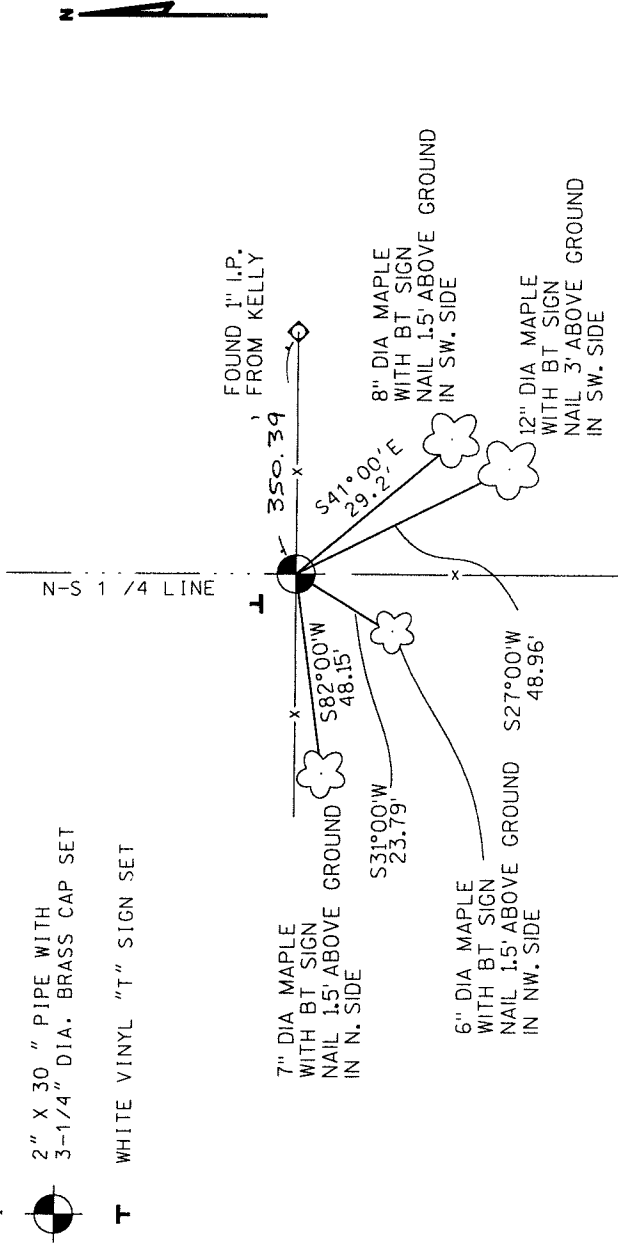
Section 17

(b)(f)(g)(h) Description of monument found at this corner and if it was accepted, state all evidence (material, testimonial, occupational, plats, records, other monuments) used as a basis for accepting. If not accepted or if nothing was found, state evidence used as basis for establishing location. If reestablished through lost corner proportionate methods, indicate all monuments, distances and directions used to establish. Indicate type of monument found or set and sign post.

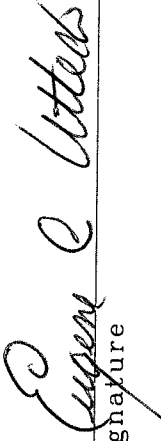
THIS CORNER WAS RESTORED THROUGH ACCEPTANCE OF A FOUND PERPETUATED LOCATION.

The original corner was established in 1860 by H.C. Fellows. In December 1908, County Surveyor, E.S. Brooks referenced to this corner for project in Section 20. William Kelly referenced to this corner on plat of survey dated 1-31-1989. Could find no other reference to this corner. At site found spike nail at the base of corner post with fence running South, East and West. Took measurements to existing evidence. Spike nail at corner post agreed with called distance by Kelly to iron pipe found 350.39 feet East of corner. Believe old fence corner best perpetuated original corner location. Removed spike nail and set County monument in place.

(c)(d)(e) Plan view of corner with ties to at least 4 witness monuments. If in disagreement with previously established corner, show the distances between the two corners and also indicate the ties to the disputed corner.



(i) I, Eugene C. Uttech, Registered Land Surveyor *S-1451 hereby certify that the corner location on this record was determined by me or under my direction and control and that this U.S. Public Land Survey Monument Record is correct and complete to the best of my knowledge and belief.


 Signature _____ Date 8/22/02

Index No. 27

