

CERTIFIED LAND CORNER RESTORATION

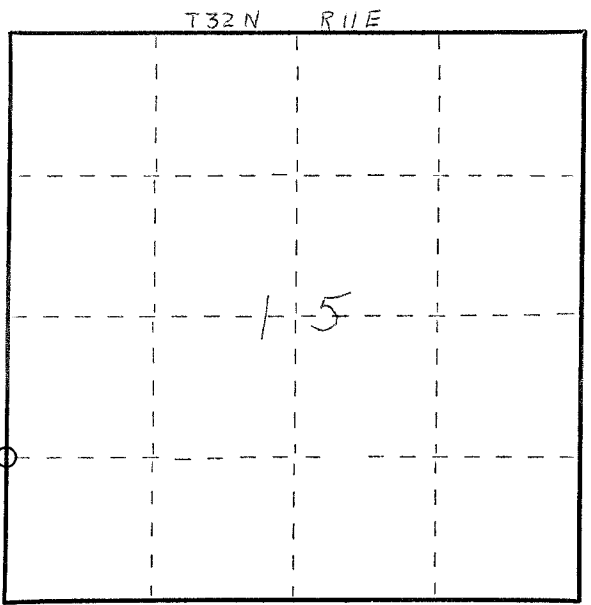
Index No. M-13

State of Wisconsin }
 County of LANGLADE } ss.

I WESLEY J. TRADEWELL, do hereby certify that on the 10TH day of MAY, 1979, I found evidence of the WEST 1/4 corner of S.W. 1/4, SECTION 15 Township 32, North, Range 11 EAST, Fourth Principal Meridian, as described hereon; and that from this evidence I established a new monument and accessories as described hereon to perpetuate the original location of this corner.

Resident witnesses:

.....



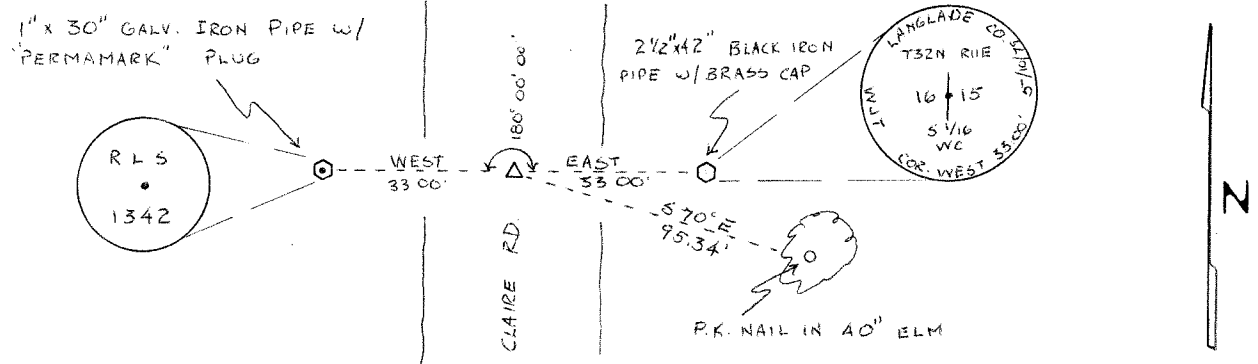
○ = Corner monument restored.

History of original corner establishment:

Description of corner evidence found:

7/8" x 24" IRON BOLT CALLED FOR IN M. HUTCHINSON NOTES (MAY 25, 1920), BOLT GONE, SET R.R. SPIKE EQUIDISTANT AND ON LINE BETWEEN W 1/4 AND SW CORNER OF SECTION 15. CORNER CHECKED GOOD WITH FENCES.

Description of monument and accessories I established to perpetuate the original location of this corner.

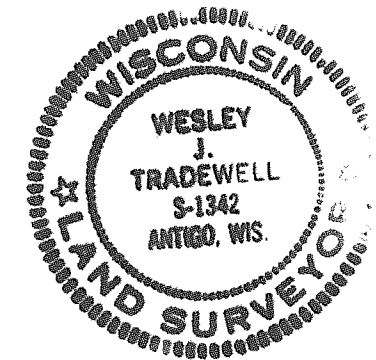


Dated at ANTIGO, Wis., this 14TH day of MAY, 1979.

Signature Wesley J. Tradewell Title REGISTERED LAND SURVEYOR Registration No. 1342
 (County Surveyor, Registered Land Surveyor, or other duly authorized official)

Office of Register of Deeds, County of....., I hereby certify that the within instrument was filed in this office for record on the..... day of....., 19..... at..... o'clock..... M.

.....
 (Register of Deeds)
 By..... Deputy



FORM 985 R. C. MILLER CO., MILWAUKEE