

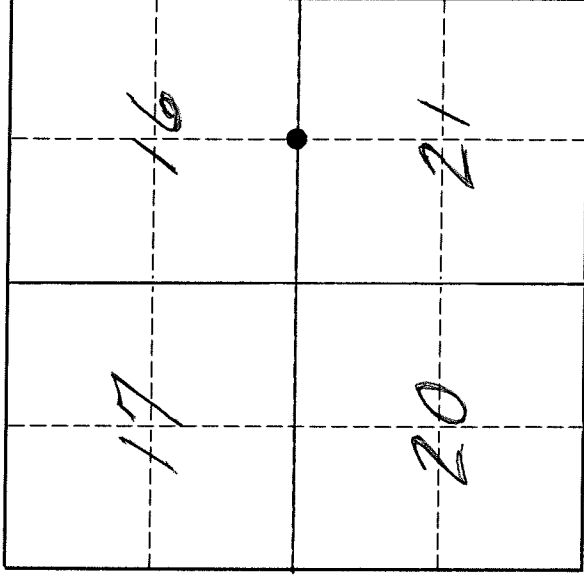
U. S. PUBLIC LAND SURVEY MONUMENT RECORD

INSTRUCTIONS:

This record shall show the location of the corner and shall include all of the following nine elements (a through i).

- (a) Identify the corner by reference to the U.S. public land survey system.
 ● = Corner monument restored.

The South Quarter corner of Section 16, Township 32 North, Range 11 East, Langlade County, Wisconsin.



T. 32 N., R. 11 E.

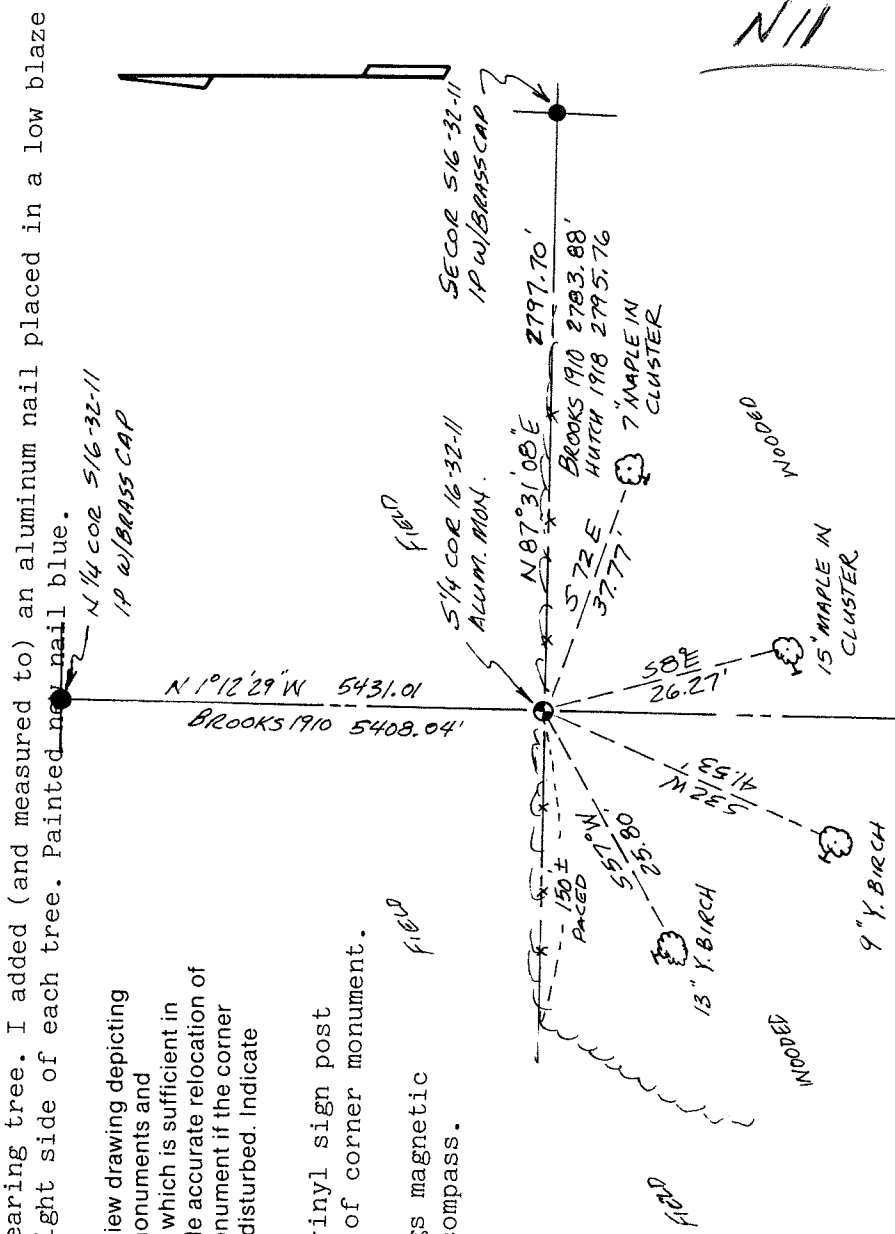
- (b) Describe any record evidence, monument evidence, occupational evidence, testimonial evidence or any other material evidence you considered, and whether the monument was found or placed.
 The original corner was established in 1860 by H. C. Fellows. Original BT's: sugar, 7, N28E, 10 lks., and a hemlock, 12", S29W, 43 lks. In 1910, E.S. Brooks found evidence of the original BT's and marked two new bt's. In 1918, Hutchinson found "1/4 post" and set a pump point. In 1990, Wm. Kelly found 1 1/4" iron pipe and replaced it with an aluminum monument. 09/13/95 I found Kellys aluminum pipe and a 1 1/4" well point frost heaved and leaning north. I removed the well point and laid it on the ground. I straightened the existing 2" aluminum monument with 3 1/4" alum. cap and made it solid in the ground. I accepted Kellys perpetuated location as the best evidence of the original corner location and remeasured Kellys bearing trees as shown below.

- (c) In the plan view drawing below, provide reference ties to at least 4 witness monuments, or, if the location is within a municipality, to at least 2 witness monuments. (Witness monuments shall be made of concrete, natural stone, iron or other equally durable material).
 Describe witness monuments.
 = Kellys bearing tree. I added (and measured to) an aluminum nail placed in a low blaze on the right side of each tree. Painted nail blue.

- (d) Show a plan view drawing depicting the relevant monuments and reference ties which is sufficient in detail to enable accurate relocation of the corner monument if the corner monument is disturbed. Indicate north.

Set white vinyl sign post 1.2' north of corner monument.

Tie bearings magnetic with hand compass.



N 11

Describe any material discrepancy between the location of the corner as restored or reestablished and the location of that corner as previously restored or reestablished by distance and direction. Show the discrepancy on the plan view drawing under (d), above. Show the distances between the corner as previously restored or reestablished and (1) the corner as restored or reestablished, and (2) to at least 2 of the witness monuments shown on the drawing in (d), above.
No discrepancy.

(f) Was the corner restored through acceptance of (1) an obliterated evidence location, or, (2) a found perpetuated location?
A found perpetuated location.

(g & h) Was the corner reestablished through lost corner proportionate methods? If so, show the method, including the directions and distances to other public land survey corners used as evidence or used for proportioning in determining the corner location.
No.

(i) I, David E. Tlusty, Langlade County Surveyor,
(type or print name)

certify that the corner location shown on this record was determined by me or under my direction and control and that this U.S. Public Land Survey Monument Record is correct and complete to the best of my knowledge and belief.

David E. Tlusty 10/10/95
Signature Date

