

4 321116 0000

U.S. PUBLIC LAND SURVEY MONUMENT RECORD

(Prepared and as required by S. A-E 7.08 WI Administrative Code)

The SOUTHEAST corner of Section 16, T. 32 N., R. 11 E., Langlade County, WI
Corner was (check all that apply)

- Restored through acceptance of an obliterated evidence location.
- Restored through acceptance of a found perpetuated location.
- Determined to be lost and re-established through proportionate methods. (show bearings and distances to PLSS corners used for proportioning.)
- Restored/recovered/re-established in a location that differs from a previously established position. (Show difference in plan view below.)
- Check here if additional information is shown on the reverse side of this form.

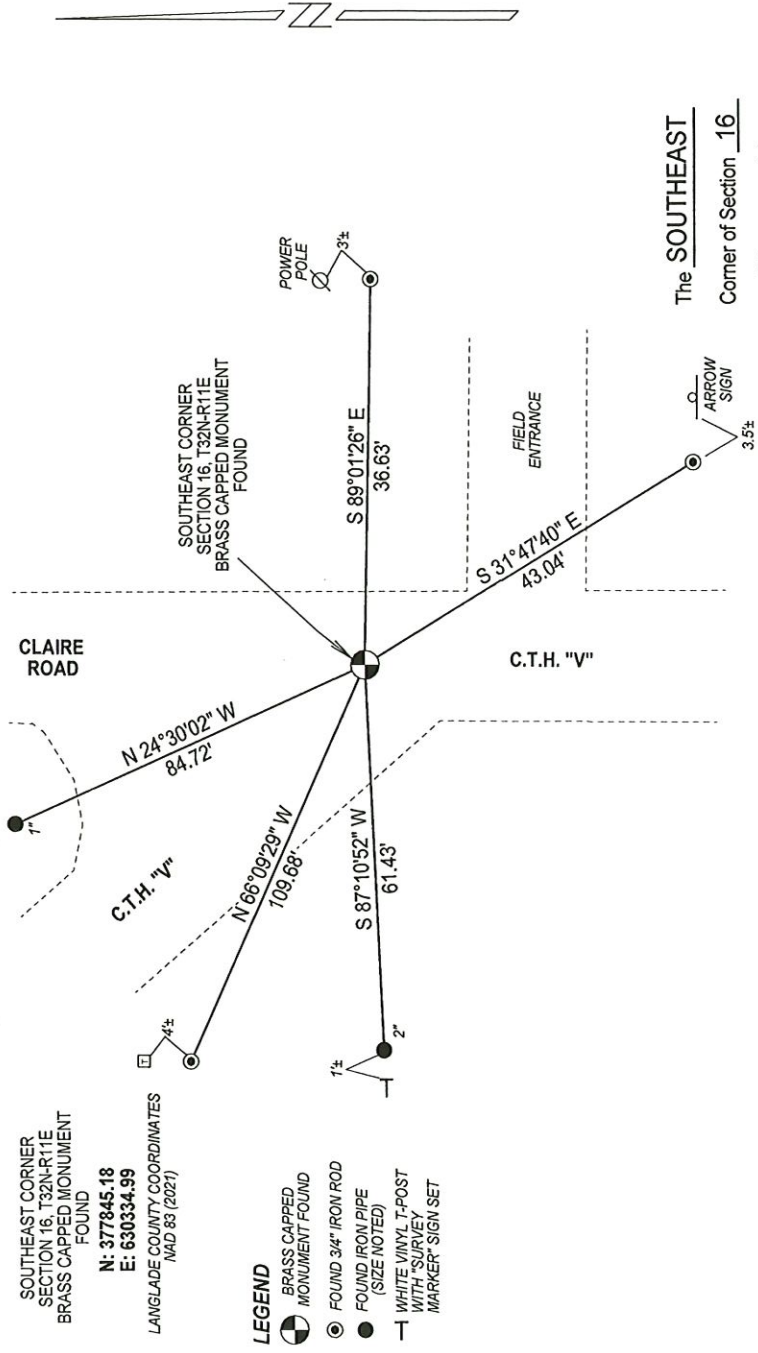
Describe record evidence, recovered physical evidence, occupational evidence, testimonial evidence, and all other evidence considered in the recovery/restoration of the corner.

- 1860 - Original corner established by H.C. Fellows - bearing trees: Sugar, 20", S17°W, 50 links and a Sugar, 8", N70°W, 38 links.
- 1910 - Brooks described this corner as a gas pipe in road.
- 1920 - M. Hutchinson described this corner as a gas pipe.
- 1979 - W. Tradewell found a 1.75" iron pipe 26" below road.
- 1995 - D. Tlusty found 3/4" iron rod by Tradewell just below road surface, but bent. At 27" below surface, Tlusty found a 1.75" iron pipe. Tlusty topped iron pipe with 4" brass cap just below road surface.
- 2022 - I found the existing brass capped iron pipe by Tlusty.

Physical description of the monument set:

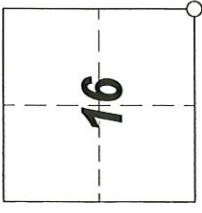
I accept the existing brass capped monument as the corner and tied it out as shown below.

Describe the accessories used to perpetuate the location of the corner. Include a plan view drawing and indicate accessories found/set. Describe measuring point on bearing trees. Show any topographic features that would aid in future recovery of the corner.



NOTES
 - SKETCH NOT DRAWN TO SCALE.
 - TIE BEARINGS SHOWN ARE LANGLADE COUNTY GRID BEARINGS.
 - ALL TIES MEASURED ELECTRONICALLY WITH TOTAL STATION.

The SOUTHEAST
 Corner of Section 16
 T. 32 N., R. 11 E.
 Langlade County, WI



INDEX No. N - 13



I, Michael J. Hoffman certify that the corner location shown on this record was determined by me or under my direction and control and that this U.S. Public Land Survey Monument Record is correct and complete to the best of my knowledge and belief.

Michael J. Hoffman 12/12/2022
 Signature Date

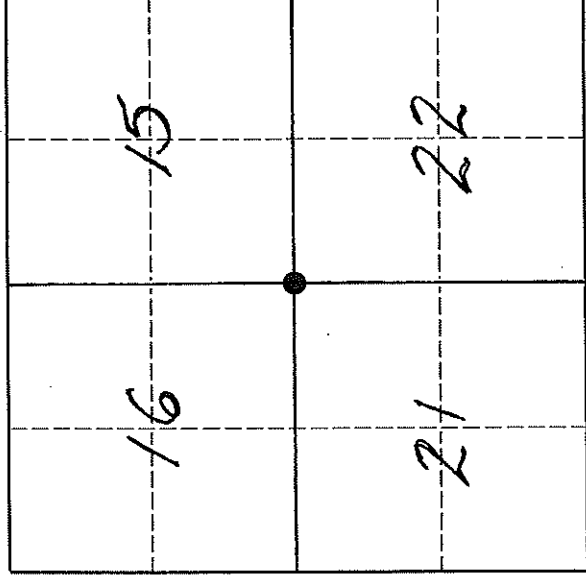
○ = Location of corner

U. S. PUBLIC LAND SURVEY MONUMENT RECORD

INSTRUCTIONS:

This record shall show the location of the corner and shall include all of the following nine elements (a through i).

- (a) Identify the corner by reference to the U.S. public land survey system.
 ● = Corner monument restored.



T 32 N, R 11 E

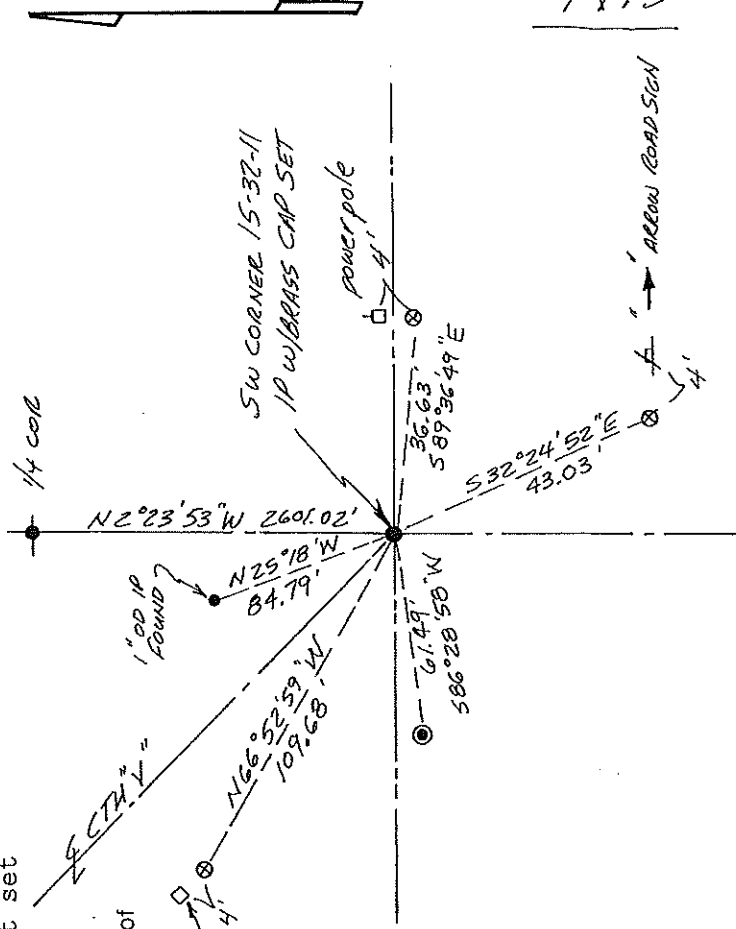
The Southwest corner of Section 15, Township 32 North, Range 11 East, Langlade County, Wisconsin.

- (b) Describe any record evidence, monument evidence, occupational evidence, testimonial evidence or any other material evidence you considered, and whether the monument was found or placed.
 The original corner was established in 1860 by Hiram C. Fellows. Original BT's: sugar, 20", S17W, 50 lks., sugar, 8", N70W, 38 lks. Brooks, in 1910 described this corner as "gass pipe in rd". In 1920, Hutchinson, FB122-54, described this corner as gas pipe. May 10, 1979, Wesley Tradewell found a 1 3/4" iron pipe 26" below road. 08/08/95, D. Tlusty, found Tradewells NW witness monument to be missing and the west witness monument has been damaged. I found a 3/4" iron rod by Tradewell just below the road surface, but bent. At 27" below the road surface, I found a 1 3/4" (OD) iron pipe. bent slightly to the south. I straightened the existing pipe and topped it with a 1 1/4" x 18" iron pipe with 4" brass cap, top of which is just below the road surface. I accepted the found pipe as the best evidence of the original corner position as perpetuated by Brooks and Hutchinson.

- (c) In the plan view drawing below, provide reference ties to at least 4 witness monuments, or, if the location is within a municipality, to at least 2 witness monuments. (Witness monuments shall be made of concrete, natural stone, iron or other equally durable material.)
 Describe witness monuments.
 ⊗ = 3/4" x 30" re-bar with red plastic cap set flush
 ⊙ = 2" iron pipe found (WM set by Tradewell, but brass cap is missing)
 ○ = white vinyl sign post set

- (d) Show a plan view drawing depicting the relevant monuments and reference ties which is sufficient in detail to enable accurate relocation of the corner monument if the corner monument is disturbed. Indicate north.
 tele. ped. 4'

= white vinyl sign post set
 Show a plan view drawing depicting the relevant monuments and reference ties which is sufficient in detail to enable accurate relocation of the corner monument if the corner monument is disturbed. Indicate north.



Tie bearings referenced to section line shown.

N13

ARROW ROAD SIGN

CERTIFIED LAND CORNER RESTORATION

Index No. N-13

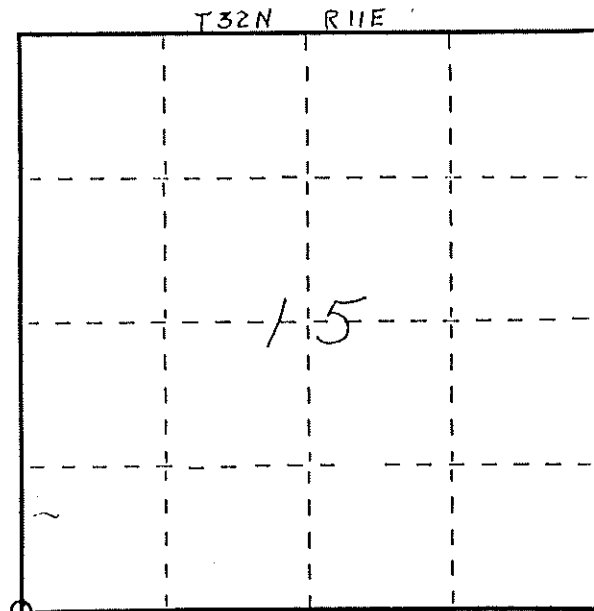
State of Wisconsin }
 County of LANGLADE } ss.

I, WESLEY J. TRADEWELL, do hereby certify that on the 10TH day of MAY, 19 79, I found evidence of the SOUTHWEST corner of SECTION 15 Township 32, North, Range 11 EAST, Fourth Principal Meridian, as described hereon; and that from this evidence I established a new monument and accessories as described hereon to perpetuate the original location of this corner.

Resident witnesses:

JOE RANK

FORM 985 M. C. MILLER CO., MILWAUKEE



○ = Corner monument restored.

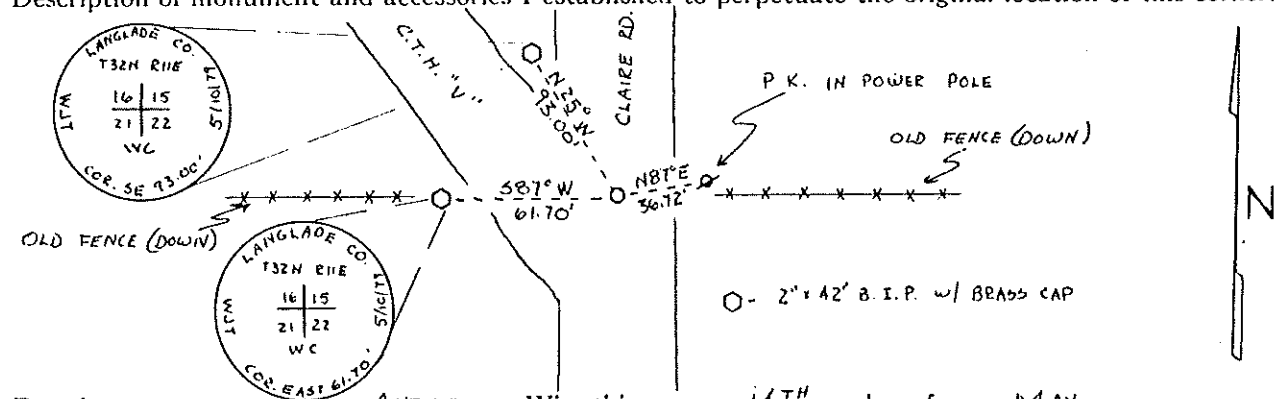
History of original corner establishment:

Description of corner evidence found:

FOUND 1 3/4" IRON PIPE BELOW 16" x 5" x 9" STONE (COULD SEE NO DISTINCT MARKINGS ON STONE) IRON PIPE WAS 26" BELOW ROAD SURFACE. PIPE CHECKED GOOD WITH DISTANCE SHOWN ON M. HUTCHINSON'S NOTES (19.71 CH., SW CORNER SECTION 15 TO W 1/8 CORNER OF SW 1/4, SECTION 15)

SET 3/4" x 24" IRON ROD OVER FOUND IRON PIPE.

Description of monument and accessories I established to perpetuate the original location of this corner.



Dated at ANTIGO, Wis., this 14TH day of MAY, 19 79.

Signature Wesley J. Tradewell Title REGISTERED LAND SURVEYOR Registration No. 1342
 (County Surveyor, Registered Land Surveyor, or other duly authorized official)

Office of Register of Deeds, County of _____, I hereby certify that the within instrument was filed in this office for record on the _____ day of _____, 19 _____ at _____ o'clock _____ M.

(Register of Deeds)

By _____ Deputy

