

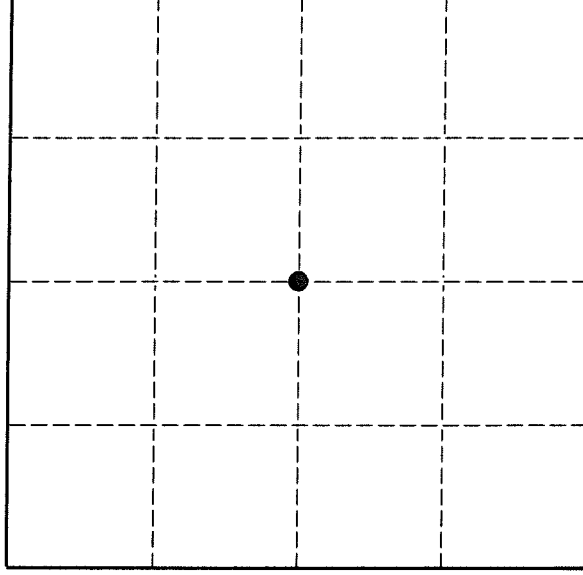
# U. S. PUBLIC LAND SURVEY MONUMENT RECORD

**I N S T R U C T I O N S:**

This record shall show the location of the corner and shall include all of the following nine elements (a through i).

- (a) Identify the corner by reference to the U.S. public land survey system.
- = Corner monument restored.

The Center of Section 15, Township 32 North, Range 11 East, Langlade County, Wisconsin.



15-32-11

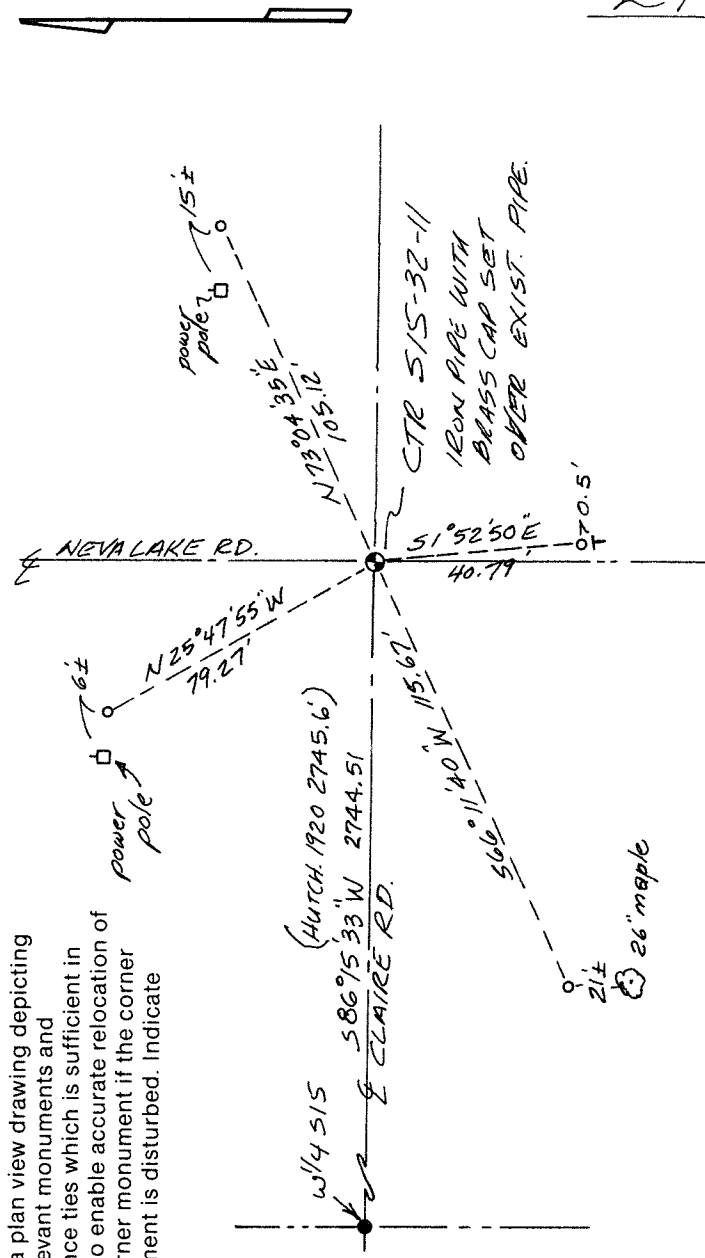
- (b) Describe any record evidence, monument evidence, occupational evidence, testimonial evidence or any other material evidence you considered, and whether the monument was found or placed.

This corner was not monumented in the original government survey. In 1920, Malsolm Hutchinson (FB122-54) ran the quarter lines and set an iron pipe for the corner. 08/29/95 D. Tlusty found 1" iron pipe with some kind of fixture near top. Pipe is 1.6' below road surface. Pipe found is in agreement with Hutchinsons distance to the west. I accepte the pipe found as the best evidence of a surveyed center of section and perpetuate the location as shown hereon. Directly over the pipe found, I set a 1 1/2" x 18" iron pipe with 4" brass cap flush with road surface.

- (c) In the plan view drawing below, provide reference ties to at least 4 witness monuments, or, if the location is within a municipality, to at least 2 witness monuments. (Witness monuments shall be made of concrete, natural stone, iron or other equally durable material.) Describe witness monuments.

○ = 3/4" x 30" re-bar with red plastic cap set flush with ground  
 = white vinyl sign post with "Survey Marker" sign set

- (d) Show a plan view drawing depicting the relevant monuments and reference ties which is sufficient in detail to enable accurate relocation of the corner monument if the corner monument is disturbed. Indicate north.



Describe any material discrepancy between the location of the corner as restored or reestablished and the location of that corner as previously restored or reestablished by distance and direction. Show the discrepancy on the plan view drawing under (d), above. Show the distances between the corner as previously restored or reestablished and (1) the corner as restored or reestablished, and (2) to at least 2 of the witness monuments shown on the drawing in (d), above.

No discrepancy.

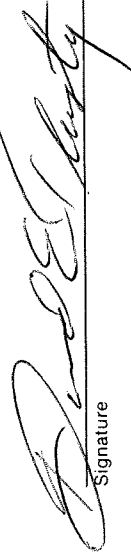
- (f) Was the corner restored through acceptance of (1) an obliterated evidence location, or, (2) a found perpetuated location?  
A found perpetuated location

- (g & h) Was the corner reestablished through lost corner proportionate methods? If so, show the method, including the directions and distances to other public land survey corners used as evidence or used for proportioning in determining the corner location.

No.

- (i) I, David E. Tlusty, Langlade County Surveyor,  
(type or print name)

certify that the corner location shown on this record was determined by me or under my direction and control and that this U.S. Public Land Survey Monument Record is correct and complete to the best of my knowledge and belief.

  
Signature

11/9/95  
Date

