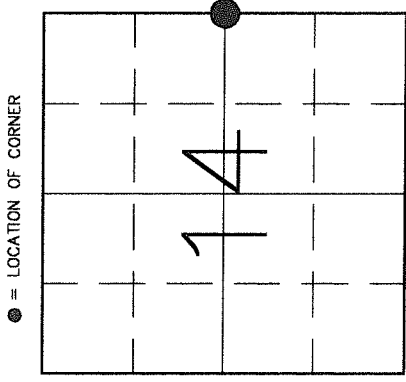


U.S. PUBLIC LAND SURVEY MONUMENT RECORD

HISTORY OF ORIGINAL CORNER ESTABLISHMENT AND SUBSEQUENT RESTORATION AND DESCRIPTION OF ANY RECORD, MONUMENT OCCUPATIONAL, TESTIMONIAL OR OTHER EVIDENCE CONSIDERED:

THE ORIGINAL CORNER WAS ESTABLISHED IN 1860 BY HIRAM C. FELLOWS. ORIGINAL BEARING TREES: HEMLOCK 20" SOE 19LKS., HEMLOCK 23" N43E 18LKS. BROOKS IN 1908 HAS A DISTANCE OF 5299.14' FROM THE W 1/4 TO THE E 1/4 OF SEC 14, OBT'S GONE. HE FOUND A BT, SUGAR MAPLE 12" N23E 12-1/2LKS, AND RECORDED A NEW BT: SUGAR MAPLE 11" S6W 23-1/2LKS. A RESIDENT WITNESS CLAIMED THAT A FENCELINE INTERSECTION HAS BEEN USED AS THE LOCATION OF THE E 1/4 COR. THE DISTANCE FROM THIS FENCE INTERSECTION TO THE W 1/4 IS WITHIN 6' OF BROOKS' DISTANCE. WE ACCEPTED THIS LOCATION AS THE E 1/4 COR. SET A 1 1/4" ROD FOR THE CORNER AND TIED OUT.

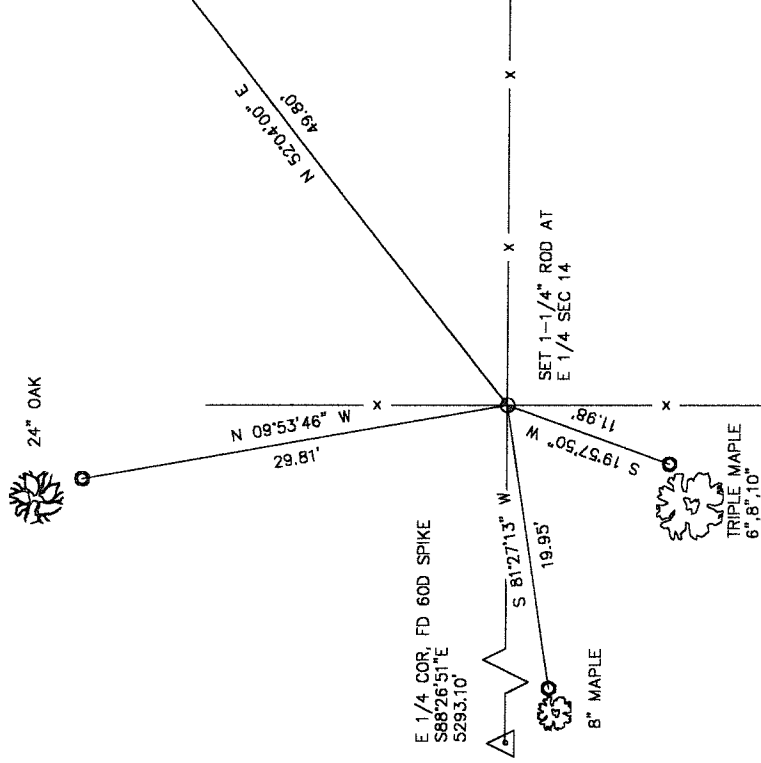


SECTION 14
 TOWNSHIP 32 NORTH, RANGE 11 EAST
 TOWN OF NEVA
 LANGLADE COUNTY, WISCONSIN

CORNER WAS: (CHECK ALL THAT APPLY)

- RESTORED THROUGH ACCEPTANCE OF AN OBLITERATED EVIDENCE LOCATION
- RESTORED THROUGH ACCEPTANCE OF A FOUND PERPETUATED LOCATION
- CONSIDERED A LOST CORNER AND REESTABLISHED THROUGH LOST CORNER PROPORTIONATE METHODS (INCLUDE A PLAN VIEW DRAWING SHOWING DISTANCES AND DIRECTIONS TO OTHER PUBLIC LAND SURVEY CORNERS USED FOR PROPORTIONING AND DETERMINING THE CORNER LOCATION)
- RESTORED OR REESTABLISHED IN A LOCATION THAT DIFFERS FROM A PREVIOUS RESTORATION OR REESTABLISHMENT (INCLUDE A PLAN VIEW DRAWING AND INDICATE WHAT WAS SET AND/OR FOUND)
- CHECK IF THERE IS ADDITIONAL INFORMATION ON BACK

DESCRIBE THE MONUMENT AND ACCESSORIES USED TO PERPETUATE THE LOCATION OF THE CORNER (INCLUDE A PLAN VIEW DRAWING AND INDICATE WHAT WAS SET AND/OR FOUND) ALSO INCLUDE FOUR TIES TO THE SECTION CORNER AND DESCRIPTION OF THE TIES.



- SET 1" X30" I. PIPE AT ALL TIES
- ⊕ SET 1 1/4" X30" ROD



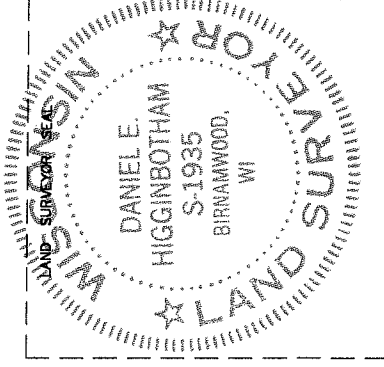
321142000

DANIEL E. HIGGINBOTHAM

(Type or print name) CERTIFY THAT THE CORNER LOCATION SHOWN ON THIS RECORD WAS DETERMINED BY ME OR UNDER MY DIRECTION AND CONTROL AND THAT THIS U.S. PUBLIC LAND SURVEY MONUMENT RECORD IS CORRECT AND COMPLETE TO THE BEST OF MY KNOWLEDGE AND BELIEF.

 SIGNATURE

3/13/00
 DATE



INDEX NO.

L21