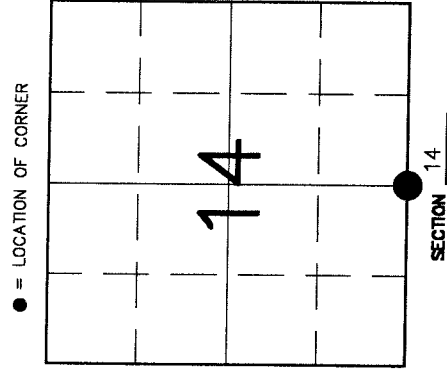


U.S. PUBLIC LAND SURVEY MONUMENT RECORD

HISTORY OF ORIGINAL CORNER ESTABLISHMENT AND SUBSEQUENT RESTORATION AND DESCRIPTION OF ANY RECORD, MONUMENT OCCUPATIONAL, TESTIMONIAL OR OTHER EVIDENCE CONSIDERED:

THE ORIGINAL CORNER WAS ESTABLISHED IN 1860 BY HIRAM C. FELLOWS. ORIGINAL BEARING TREES: HEMLOCK 12" N35E 131LKS., HEMLOCK 10" S25E 111LKS. BROOKS IN 1908 HAS A DISTANCE OF 5217.96' FROM THE N1/4 TO THE S1/4 OF SEC 14 AND FOUND AN OBT STUMP. HE RECORDED NEW BT'S MAPLE 14" S521/2E 22LKS., HEMLOCK 12" S22W 24LKS. HUTCHINSON'S NOTES OF 1908 RECORD THE S 1/4 AS BEING A 12X12X24 STONE. RESIDENT WITNESSES CLAIMED A FENCE COR. HAS BEEN USED AS THE LOCATION FOR THE S 1/4. WE DID NOT FIND THE STONE BUT THE DISTANCE FROM THE FENCE COR TO THE EAST-WEST 1/4 LINE WAS WITHIN 5 FEET OF BROOKS' DISTANCE. WE ACCEPTED THIS FENCE COR AS THE LOCATION FOR THE S 1/4. SET A 1 1/4" ROD AND TIED OUT.

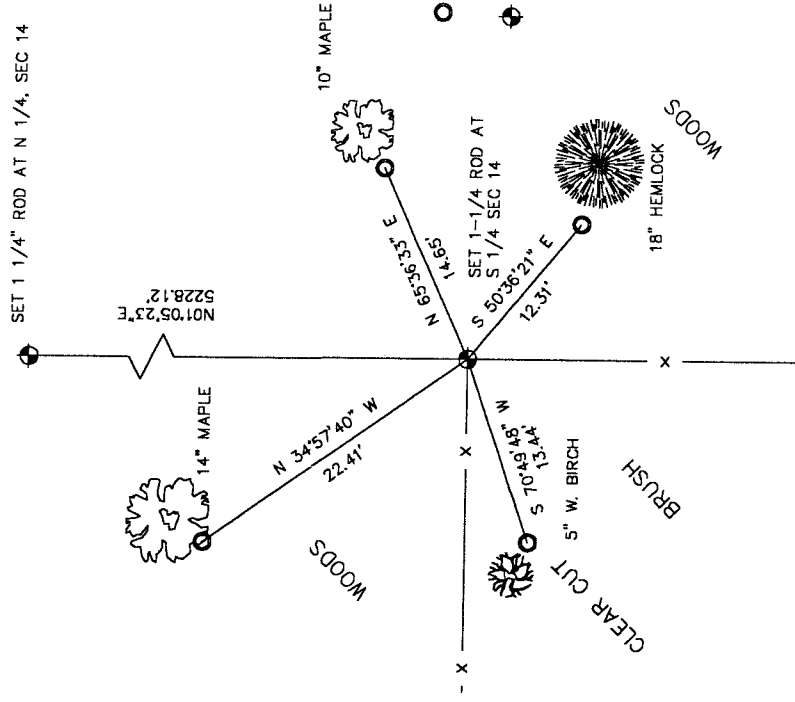


SECTION 14
 TOWNSHIP 32 NORTH, RANGE 11 EAST
 TOWN OF NEVA
 LANGLADE COUNTY, WISCONSIN

CORNER WAS: (CHECK ALL THAT APPLY)

- RESTORED THROUGH ACCEPTANCE OF AN OBLITERATED EVIDENCE LOCATION
- RESTORED THROUGH ACCEPTANCE OF A FOUND PERPETUATED LOCATION
- CONSIDERED A LOST CORNER AND REESTABLISHED THROUGH LOST CORNER PROPORTIONATE METHODS (INCLUDE A PLAN VIEW DRAWING SHOWING DISTANCES AND DIRECTIONS TO OTHER PUBLIC LAND SURVEY CORNERS USED FOR PROPORTIONING AND DETERMINING THE CORNER LOCATION)
- RESTORED OR REESTABLISHED IN A LOCATION THAT DIFFERS FROM A PREVIOUS RESTORATION OR REESTABLISHMENT (INCLUDE A PLAN VIEW DRAWING AND INDICATE WHAT WAS SET AND/OR FOUND)
- CHECK IF THERE IS ADDITIONAL INFORMATION ON BACK

DESCRIBE THE MONUMENT AND ACCESSORIES USED TO PERPETUATE THE LOCATION OF THE CORNER. (INCLUDE A PLAN VIEW DRAWING AND INDICATE WHAT WAS SET AND/OR FOUND) ALSO INCLUDE FOUR TIES TO THE SECTION CORNER AND DESCRIPTION OF THE TIES.

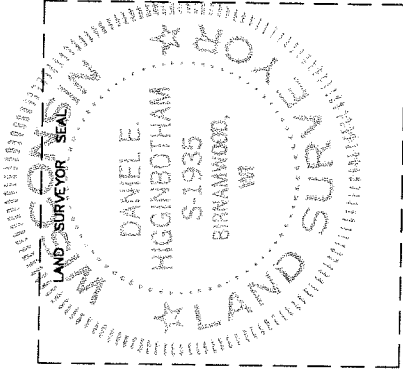


321140020



- SET 1" x 30" I. PIPE AT ALL TIES
- ◐ SET 1 1/4" x 30" ROD

N19



DANIEL E. HIGGINBOTHAM

(Type or print name) CERTIFY THAT THE CORNER LOCATION SHOWN ON THIS RECORD WAS DETERMINED BY ME OR UNDER MY DIRECTION AND CONTROL AND THAT THIS U.S. PUBLIC LAND SURVEY MONUMENT RECORD IS CORRECT AND COMPLETE TO THE BEST OF MY KNOWLEDGE AND BELIEF.

Daniel E. Higginbotham

SIGNATURE

3/17/00

DATE

INDEX NO.