

U.S. PUBLIC LAND SURVEY MONUMENT RECORD

(Prepared and as required by S. A-E 7.08 WI Administrative Code)

The SOUTHWEST corner of Section 13, T. 32 N., R. 11 E., Langlade County, WI

Corner was: (check all that apply)

- Restored through acceptance of an obliterated evidence location.
- Restored through acceptance of a found perpetuated location.
- Determined to be lost and re-established through proportionate methods.
(Show bearings and distances to PLSS corners used for proportioning.)
- Restored/recovered/reestablished in a location that differs from a previously established position. (Show difference in plan view below.)

- Check here if additional information is shown on the reverse side of this form.

Describe record evidence, recovered physical evidence, occupational evidence, testimonial evidence and all other evidence considered in the recovery/restoration of the corner.

The original corner was established in 1860 by Hiram C. Fellows. Original bearing trees: elm, 20", N69°W, 18 lks. and a cherry, 14", S70°E, 33 lks. Hutchinson (date unknown) surveyed south and east from this corner. He described this corner as a stone, 10" x 10" x 20" with + on top. Former surveyor Kelly, 1990, "Found 1 1/4" iron pipe intersecting with fence lines running N & W. Set 3" al. witness monument north of corner". 05/14/97 D. Tlusty, T. Wencel dug for corner with backhoe. At 24" below ground, found stone upright, in good condition with a chiseled "+" on top. Stone was found just under NE end of old metal culvert. Found no evidence of 1 1/4" iron pipe by Kelly. Accepted this stone as the best evidence of a previously perpetuated location and measured witness monuments as shown below. Set 1" x 30" iron pipe at N. edge of stone.

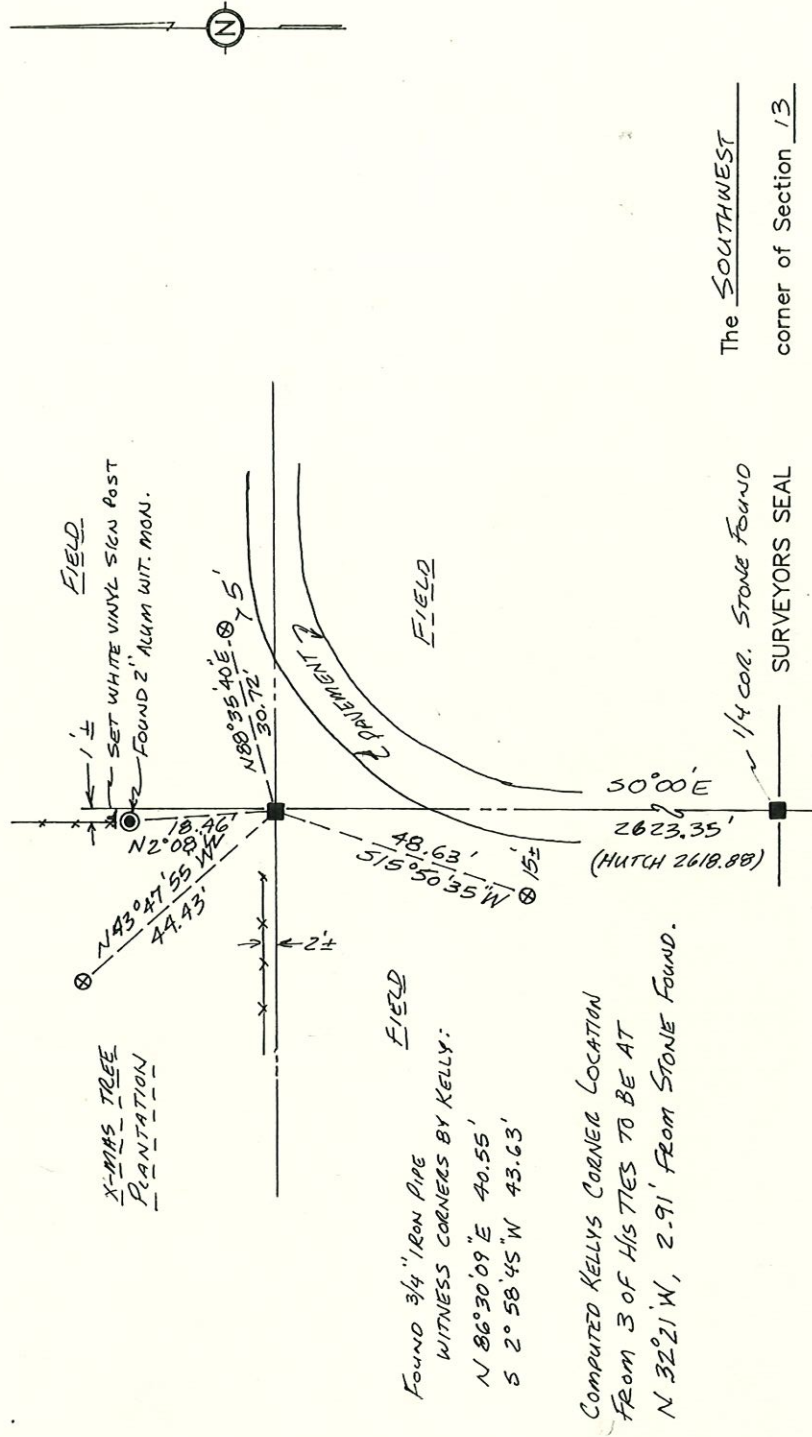
Physical description of the monument set:

For the corner, I left the stone as found.

Describe the accessories used to perpetuate the location of the corner. Include a plan view drawing and indicate accessories found/set. Describe measuring point on bearing trees. Show any topographic features that would aid in future recovery of the corner.

⊗ = 3/4" x 30" rebar with red plastic cap set flush with ground

Notes FB14-14



The SOUTHWEST corner of Section 13

T. 32 N., R. 11 E.
Langlade County, WI



1. DAVID E. TLUSTY, LANGLADE COUNTY SURVEYOR, certify that the corner location shown on this record was determined by me or under my direction and control and that this U.S. Public Land Survey Monument Record is correct and complete to the best of my knowledge and belief.

David E. Tlusty
Signature

Date

INDEX No. N21

14	13
23	24

○ = Location of corner

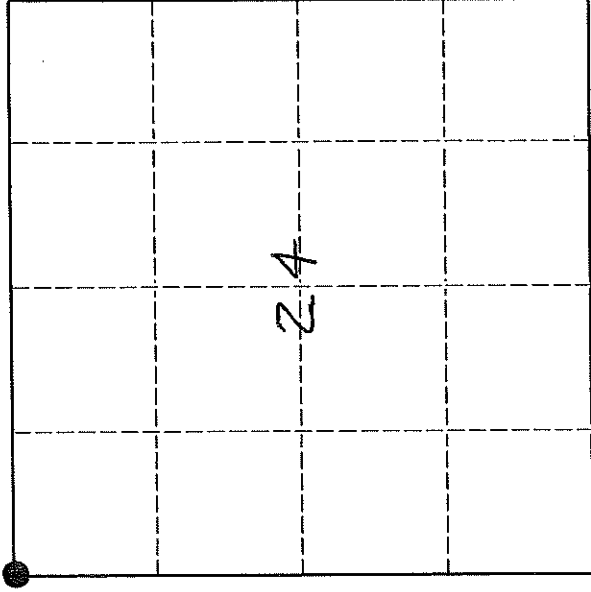
U. S. PUBLIC LAND SURVEY MONUMENT RECORD

I N S T R U C T I O N S :

This record shall show the location of the corner and shall include all of the following nine elements (a through i).

- (a) Identify the corner by reference to the U.S. public land survey system.
- O = Corner monument restored.

*ORIG. COR. ESTABLISHED BY
H.C. FELLOWS, SEPT. 1860*



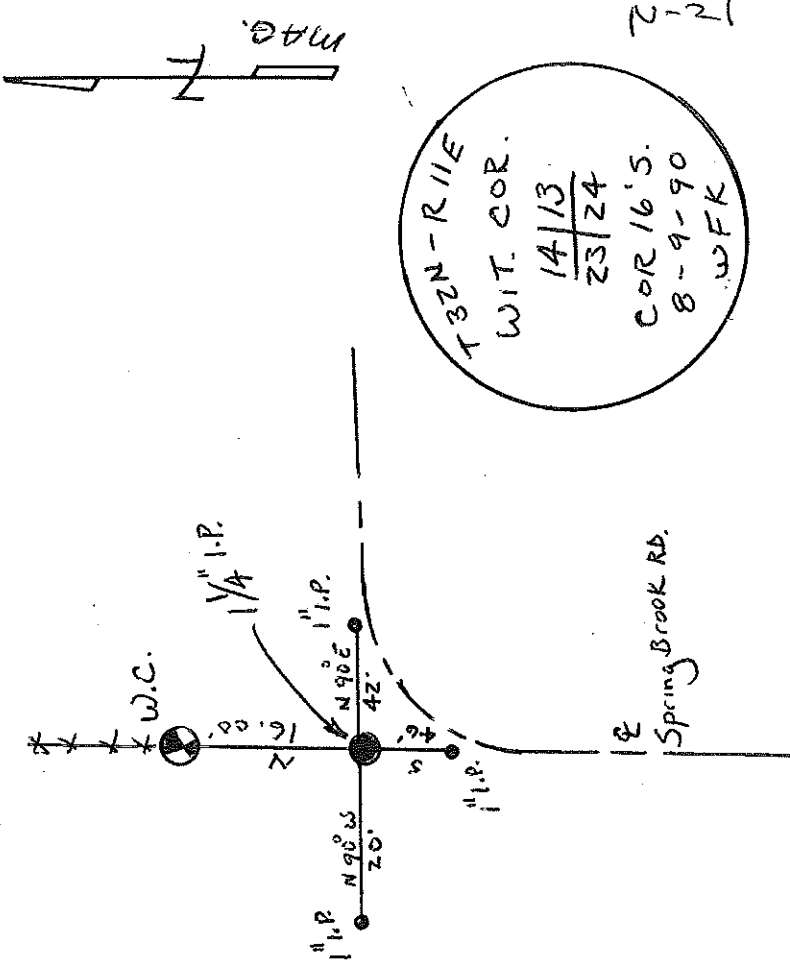
T 32N - R11E

- (b) Describe any record evidence, monument evidence, occupational evidence, testimonial evidence or any other material evidence you considered, and whether the monument was found or placed.

*FOUND 1/4" IRON PIPE INTERSECTING WITH FENCE
LINES RUNNING N & W. SET 3" AL. WITNESS MONUMENT
NORTH OF CORNER.*

- (c) In the plan view drawing below, provide reference ties to at least 4 witness monuments, or, if the location is within a municipality, to at least 2 witness monuments. (Witness monuments shall be made of concrete, natural stone, iron or other equally durable material.) Describe witness monuments.

- (c) Show a plan view drawing depicting the relevant monuments and reference ties which is sufficient in detail to enable accurate relocation of the corner monument if the corner monument is disturbed. Indicate north.



Describe any material discrepancy between the location of the corner as restored or reestablished and the location of that corner as previously restored or reestablished by distance and direction. Show the discrepancy on the plan view drawing under (d), above. Show the distances between the corner as previously restored or reestablished and (1) the corner as restored or reestablished, and (2) to at least 2 of the witness monuments shown on the drawing in (d), above.

NONE

(f) Was the corner restored through acceptance of (1) an obliterated evidence location, or, (2) a found perpetuated location.?

(2)

(g & h) Was the corner reestablished through lost corner proportionate methods? If so, show the method, including the directions and distances to other public land survey corners used as evidence or used for proportioning in determining the corner location.

N/C

(i) I, WILLIAM F. KELLY
(type or print name)

certify that the corner location shown on this record was determined by me or under my direction and control and that this U.S. Public Land Survey Monument Record is correct and complete to the best of my knowledge and belief.

William F. Kelly
Signature

8/27/90
Date

