

LANGLADE COUNTY U.S. PUBLIC LAND CORNER RESTORATION

The South Quarter corner of Section 13, T. 32 N., R. 11 E., Langlade County, WI.

Corner was: (check all that apply) 3211130020

- Restored through acceptance of an obliterated evidence location.
- Restored through acceptance of a found perpetuated location.
- Determined to be lost and re-established through proportionate methods.
- Show bearings and distances to PLS corners used for proportioning, and show original distances).
- Restored/recovered/re-established in a location that differs from a previously established position.
- (Show difference in plan view below).
- Check here if additional information is shown on the reverse side of this form.

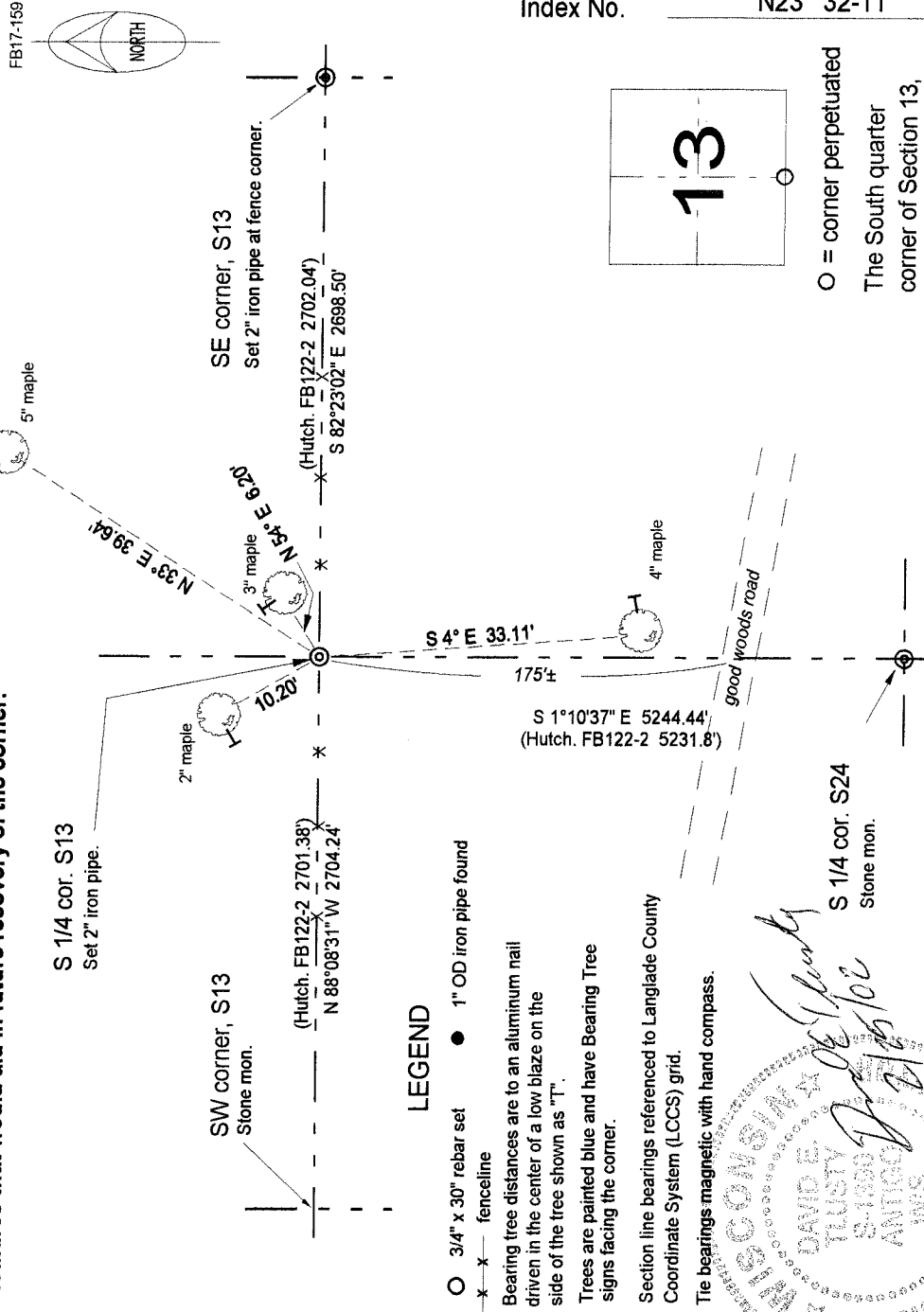
Describe record evidence, recovered physical evidence, occupational evidence, testimonial evidence and all other evidence considered in the recovery/restoration of the corner.

The original corner was established in 1860 by Hiram C. Fellows. Original bearing trees: sugar, 15", S10°W, 10 links and a lind, 12", N27°E, 10 links. In FB2-122, Hutchinson surveyed in Section 24 and described this corner as "1/4 post, orig. B.T.'s". 09/24/01 D. Tlusty found very old 1" axle shaft and old leaning well point, both in line with old fenceline running east-west. The distances to the adjoining corners east, west and south are in agreement with Hutchinsons information, and Hutchinson used many well points in his survey work. I accept the monuments found as the best evidence of the original corner.

Physical description of the monument set:

Replaced axle and well point found with a 2" x 30" galvanized, flared bottom iron pipe with brass cap.
Set white vinyl sign post 0.9' north of the corner monument.
Set old monuments found alongside the new pipe monument set.

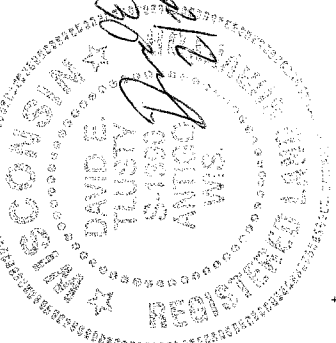
Describe the accessories used to perpetuate the corner. Include a plan view drawing and accessories found/set. Describe measuring point on bearing trees. Show any topographic features that would aid in future recovery of the corner.



- #### LEGEND
- 3/4" x 30" rebar set
 - 1" OD iron pipe found
 - fenceline
- Bearing tree distances are to an aluminum nail driven in the center of a low blaze on the side of the tree shown as "T".
Trees are painted blue and have Bearing Tree signs facing the corner.

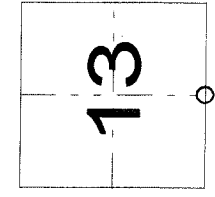
Section line bearings referenced to Langlade County Coordinate System (LCCS) grid.

Tie bearings magnetic with hand compass.



David E. Tlusty
Antique
 S 1/4 cor. S24
 Stone mon.

Index No. N23 32-11



O = corner perpetuated
 The South quarter corner of Section 13, T. 32 N., R. 11 E., Langlade County, WI

I, David E. Tlusty, Registered Land Surveyor, as Langlade County Surveyor, certify that the corner location on this record was determined by me and that this U.S. Public Land Survey Monument Record is correct to the best of my knowledge and belief.