

LANGLADE COUNTY U.S. PUBLIC LAND CORNER RESTORATION

The Southeast corner of Section 13, T. 32 N., R. 11 E., Langlade County, WI.

3211130000

Corner was: (check all that apply)

- Restored through acceptance of an obliterated evidence location.
- Restored through acceptance of a found perpetuated location.
- Determined to be lost and re-established through proportionate methods.
- Show bearings and distances to PLSS corners used for proportioning, and show original distances).
- Restored/recovered/re-established in a location that differs from a previously established position.
- (Show difference in plan view below).
- Check here if additional information is shown on the reverse side of this form.

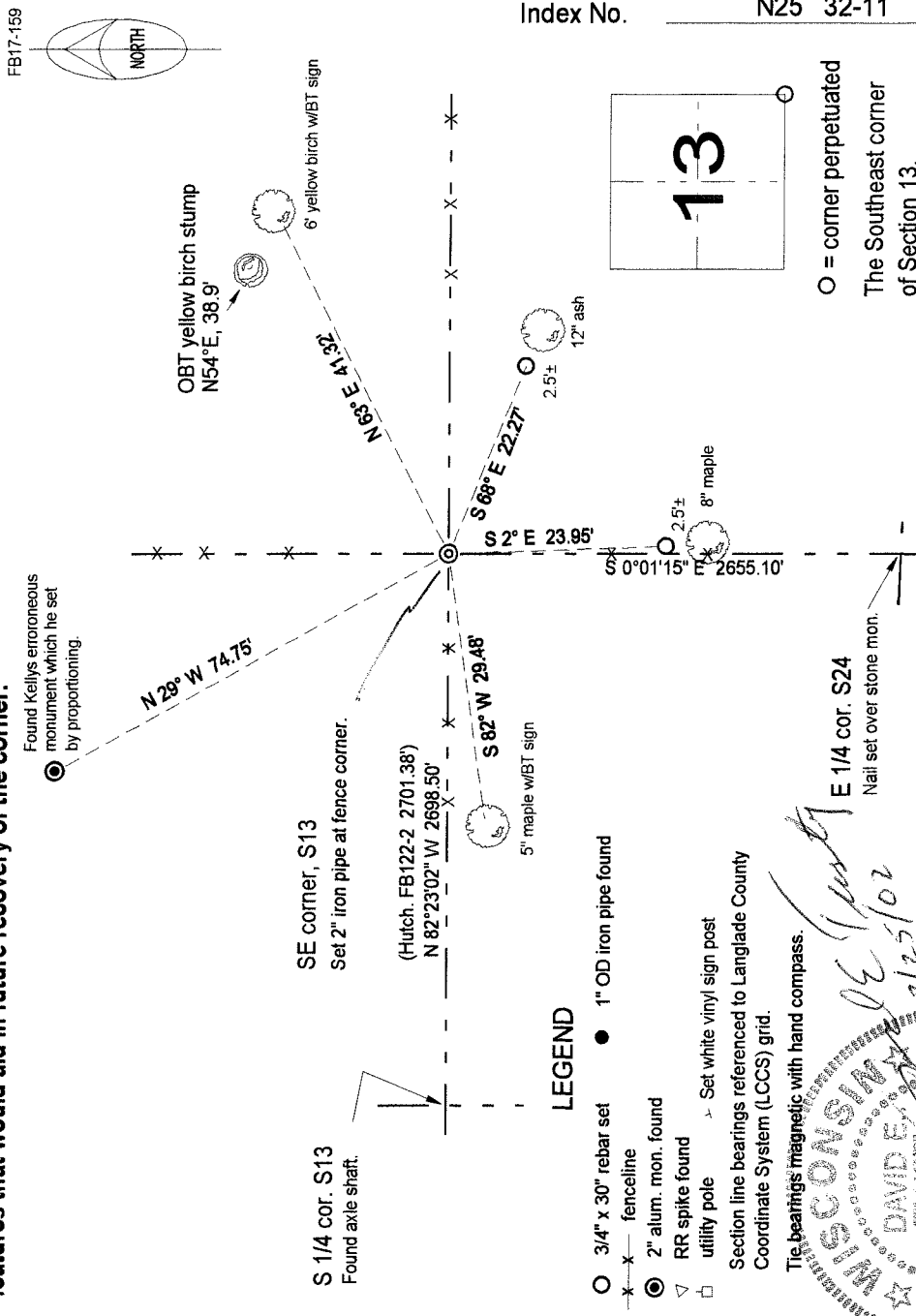
Describe record evidence, recovered physical evidence, occupational evidence, testimonial evidence and all other evidence considered in the recovery/restoration of the corner.

The original corner was established in 1857 by Alfred Millard. Original BT's: lynn, 12", N22°W, 67 links; sugar, 12", S82°E, 23 links; hemlock, 16" S69°W, 23 links and a yellow birch, 24", N52°E, 56 links. Malcolm Hutchinson (FB122-2), around 1911± surveyed in Section 24, but didn't describe this corner. In 1988, former surveyor Kelly said "Section corner re-established by lost corner proportionate methods. Located Sect. corners east and west and the 1/4 corners to the north and south. Proportioned corner relative to the original notes." 09/25/01 D. Tlusty didn't accept Kelly's corner because he didn't use the proper method of proportioning, and, more important is that fact that he missed evidence of an original bearing tree. I re-established the corner at the intersection of old fences (all down) from which I find the original yellow birch BT stump at the correct bearing and distance. This position agrees well with Hutchinsons distance to the 1/4 corner west.

Physical description of the monument set:

- Set 2" x 30" iron pipe with brass cap.
- Set white vinyl sign post 0.8' east of the corner monument.

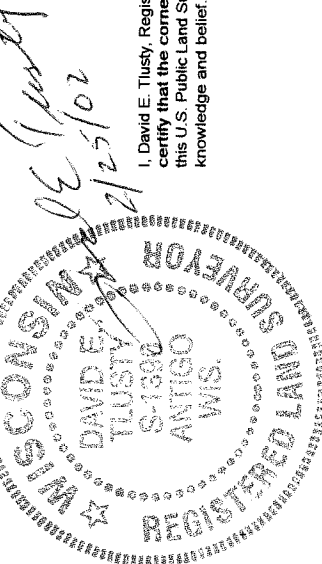
Describe the accessories used to perpetuate the corner. Include a plan view drawing and accessories found/set. Describe measuring point on bearing trees. Show any topographic features that would aid in future recovery of the corner.



- LEGEND**
- 3/4" x 30" rebar set
 - x — fenceline
 - 1" OD iron pipe found
 - ⊙ 2" alum. mon. found
 - ▽ RR spike found
 - ⊔ utility pole
 - Set white vinyl sign post

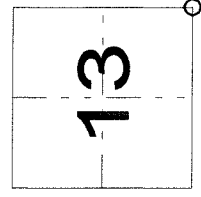
Section line bearings referenced to Langlade County Coordinate System (LCCS) grid.

Tie bearings magnetic with hand compass.



I, David E. Tlusty, Registered Land Surveyor, as Langlade County Surveyor, certify that the corner location on this record was determined by me and that this U.S. Public Land Survey Monument Record is correct to the best of my knowledge and belief.

Index No. N25 32-11



○ = corner perpetuated
The Southeast corner of Section 13,
T. 32 N., R. 11 E.,
Langlade County, WI