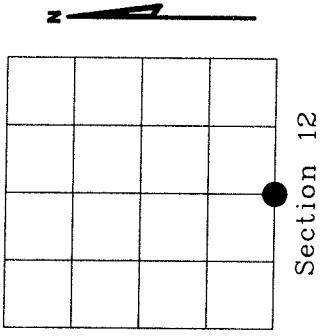


U.S. PUBLIC LAND SURVEY MONUMENT RECORD

4321120020

NOTE: This form is intended and designed to fulfill all requirements of Wisconsin Administrative Code, Chapter A-E 7.08 U.S. Public Land Survey Monument Record (3)(a)(b)(c)(d)(e)(f)(g)(h)(i). An additional sheet may be added if necessary to conform with said requirements.



Section 12

(a) Corner location: Township 32 North

Range 11 East

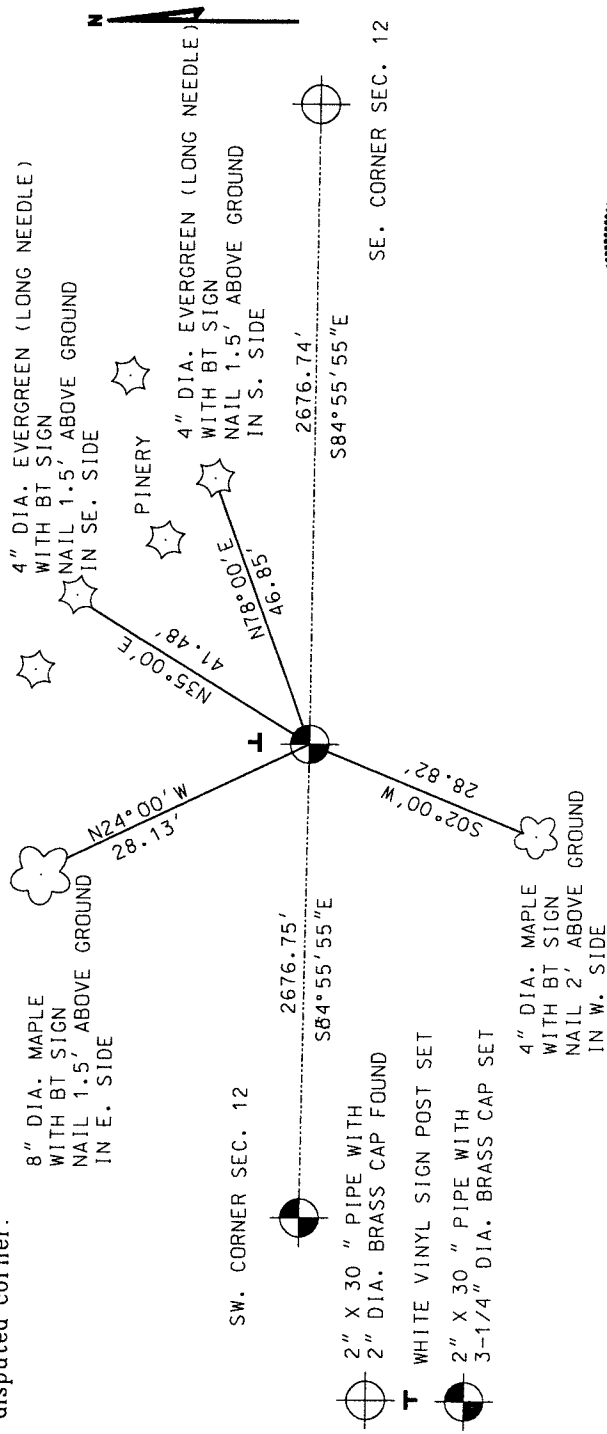
Town of NEVA, LANGLADE County, Wisconsin

THIS CORNER WAS DETERMINED TO BE LOST AND RE-ESTABLISHED THROUGH PROPORTIONATE METHODS.

(b)(f)(g)(h) Description of monument found at this corner and if it was accepted, state all evidence (material, testimonial, occupational, plats, records, other monuments) used as a basis for accepting. If not accepted or if nothing was found, state evidence used as basis for establishing location. If reestablished through lost corner proportionate methods, indicate all monuments, distances and directions used to establish. Indicate type of monument found or set and sign post.

The original corner was established in 1860 by H.C. Fellows. In 1887 B.F. Dorr referenced to this corner in Section 13. In 1888 B.F. Dorr referenced to this corner in Section 13. Could find no other reference to this corner. At site could find no evidence of corner. I took measurements and set corner on a straight line between the Southeast and Southwest corners of Section 12 and at equal distance between said corners. This location agreed with consistent chain of Dorr when comparing our measurements to measurements by Dorr along the North line of Section 13 and North-South 1/4 line of Section 13. See section summary sheet by MSA, dated 8/22/2002.

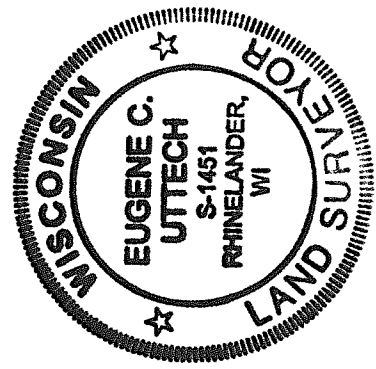
(c)(d)(e) Plan view of corner with ties to at least 4 witness monuments. If in disagreement with previously established corner, show the distances between the two corners and also indicate the ties to the disputed corner.



(i) I, Eugene C. Uttech, Registered Land Surveyor *S-1451 hereby certify that the corner location on this record was determined by me or under my direction and control and that this U.S. Public Land Survey Monument Record is correct and complete to the best of my knowledge and belief.

Eugene C. Uttech
Signature

8/22/02
Date



Index No. J23