

LANGLADE COUNTY U.S. PUBLIC LAND CORNER RESTORATION

The East 1/4 corner of Section 11, T. 32 N., R. 11 E., Langlade County, WI.

Corner was: (check all that apply)

- Restored through acceptance of an obliterated evidence location.
- Restored through acceptance of a found perpetuated location.
- Determined to be lost and re-established through proportionate methods.
- Show bearings and distances to PLSS corners used for proportioning, and show original distances).
- Restored/recovered/re-established in a location that differs from a previously established position.
- (Show difference in plan view below).
- Check here if additional information is shown on the reverse side of this form.

4321111 2000 2018

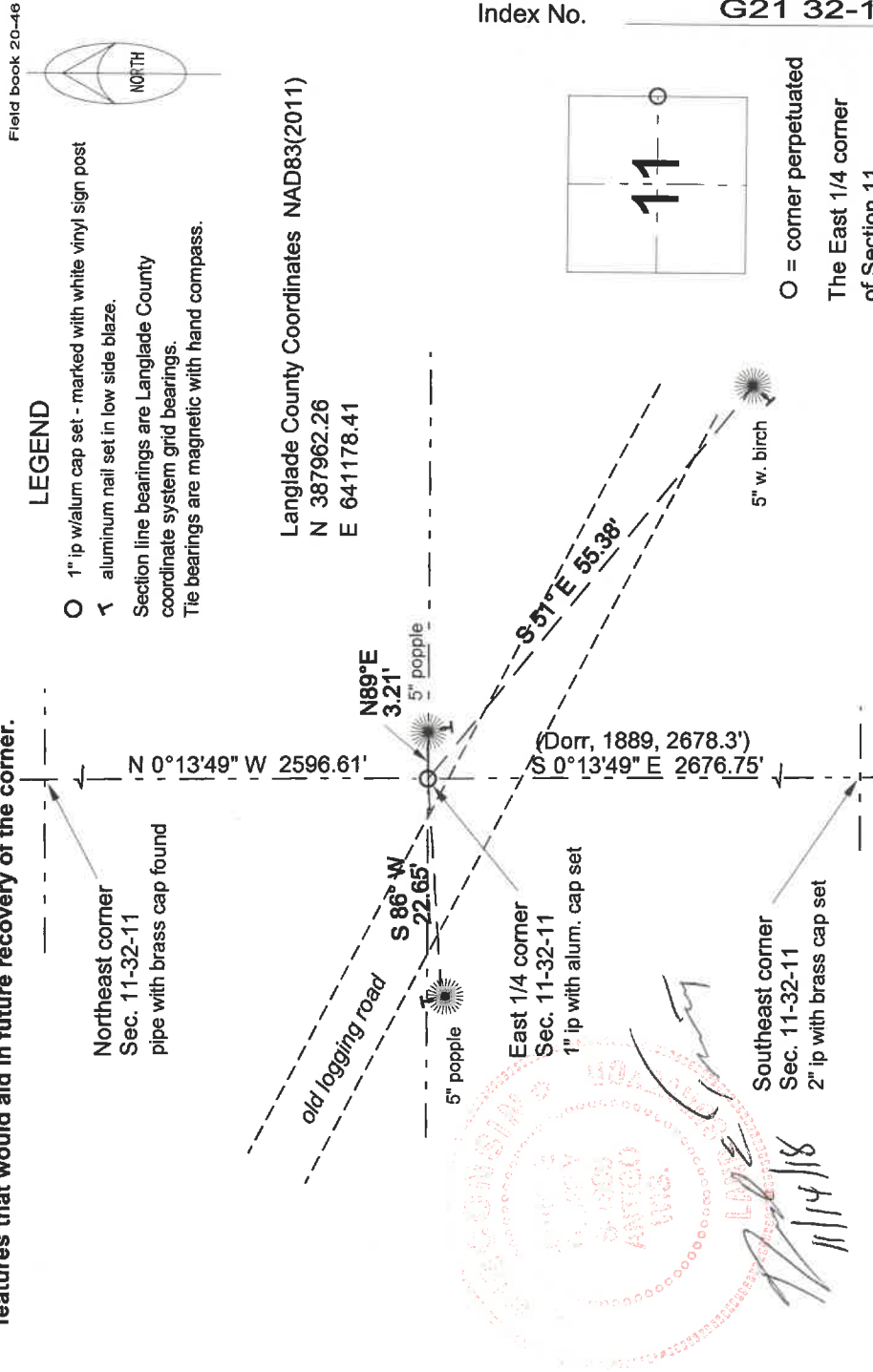
Describe record evidence, recovered physical evidence, occupational evidence, testimonial evidence and all other evidence considered in the recovery/restoration of the corner.

The original corner was established in 1860 by Hiram C Fellows. Original bearing trees: sugar, 10", S60W 25 lks. and a sugar, 14" S70E, 15 lks. In 1889, B.F. Dorr measured 2678.3' from this corner to the section corner to the south. Dorr didn't say what he had at this corner. 12/14/12 D. Tlusty set this corner on line between the NE and SE corners of Section 11, applying an index factor to Dorr's measured distance; index factor determined from Dorr's distance from SE corner Sec 11 to the E 1/4 corner Sec 14. Set monument described below.

Physical description of the monument set:

To mark the corner, I set a 1" x 30" iron pipe with aluminum cap set flush.
Set white vinyl sign post 0.4' north of corner monument.

Describe the accessories used to perpetuate the corner. Include a plan view drawing and accessories found/set. Describe measuring point on bearing trees. Show any topographic features that would aid in future recovery of the corner.



I, David E. Tlusty, Registered Land Surveyor, as Langlade County Surveyor, certify that the corner location on this record was determined by me and that this U.S. Public Land Survey Monument Record is correct to the best of my knowledge and belief.