

4321112000

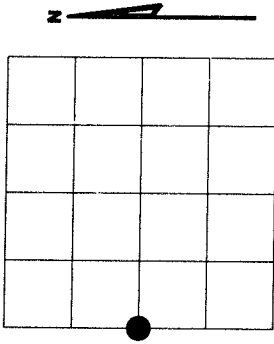
U.S. PUBLIC LAND SURVEY MONUMENT RECORD

NOTE: This form is intended and designed to fulfill all requirements of Wisconsin Administrative Code, Chapter A-E 7.08 U.S. Public Land Survey Monument Record (9)(a)(b)(c)(d)(e)(f)(g)(h)(i). An additional sheet may be added if necessary to conform with said requirements.

(a) Corner location: Township 32 North

Range 11 East

Town of NEVA, LANGLADE County, Wisconsin

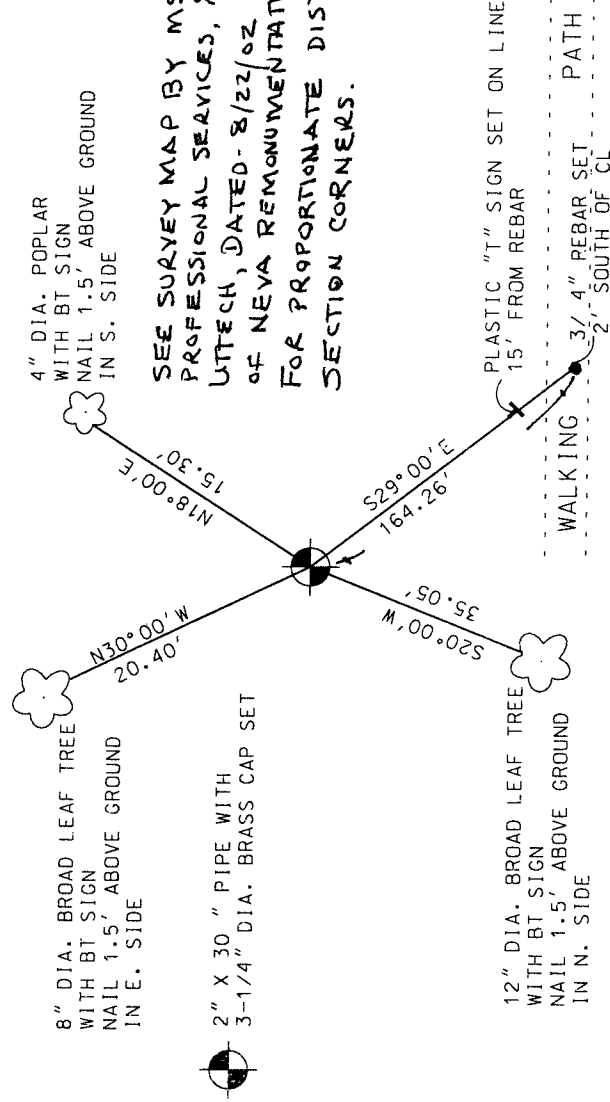


THIS CORNER WAS RESTORED THROUGH ACCEPTANCE OF A FOUND PERPETUATED LOCATION AND SINGLE PROPORTIONATE METHODS.

(b)(f)(g)(h) Description of monument found at this corner and if it was accepted, state all evidence (material, testimonial, occupational, plats, records, other monuments) used as a basis for accepting. If not accepted or if nothing was found, state evidence used as basis for establishing location. If reestablished through lost corner proportionate methods, indicate all monuments, distances and directions used to establish. Indicate type of monument found or set and sign post.

The original corner was established in 1860 by H.C. Fellows. In 1889 B.F. Dorr referenced to this corner in Section 12. Could find no other reference to this corner. At site could find no evidence of this corner. In 1889 Dorr referenced to a stone at the South 1/8 post on the West line of Section 12. I searched area, did not find stone, but did locate fence running East and West. In 1888 B.F. Dorr reference to measurements from the West 1/4 corner of Section 13. I took at the South 1/8 corner on the West line of Section 13, to said fence line distances called for by Dorr and set this corner at proportioned distance and on a straight line between the Southwest corner and the Northwest corner of Section 12. I believe old fence at South 1/8 corner best perpetuated original location of S.1/8 corner and supported this corner location.

(c)(d)(e) Plan view of corner with ties to at least 4 witness monuments. If in disagreement with previously established corner, show the distances between the two corners and also indicate the ties to the disputed corner.

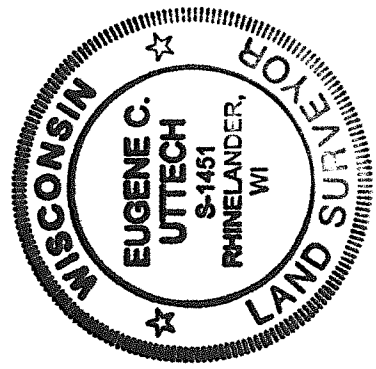


SEE REVISED D.T.

SEE SURVEY MAP BY MSA, PROFESSIONAL SERVICES, % EUGENE UTTECH, DATED 8/22/02 FOR TOWN OF NEVA REMONUMENTATION PROJECT FOR PROPORTIONATE DISTANCES TO SECTION CORNERS.

(i) I, Eugene C. Uttech, Registered Land Surveyor #S-1451 hereby certify that the corner location on this record was determined by me or under my direction and control and that this U.S. Public Land Survey Monument Record is correct and complete to the best of my knowledge and belief.

Eugene C. Uttech
Signature
8/22/02
Date



Index No. G21