

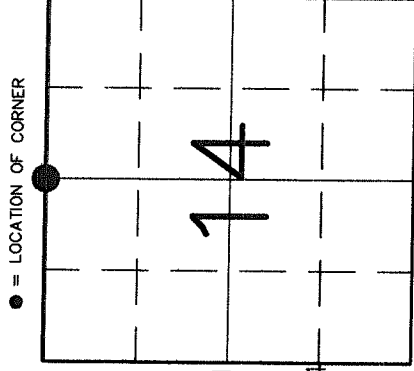
U.S. PUBLIC LAND SURVEY

MONUMENT RECORD

43211110020

HISTORY OF ORIGINAL CORNER ESTABLISHMENT AND SUBSEQUENT RESTORATION AND DESCRIPTION OF ANY RECORD, MONUMENT OCCUPATIONAL, TESTIMONIAL OR OTHER EVIDENCE CONSIDERED:

The Original Corner was established in 1860 by Hiram Fellows. Original BT's: 12" Birch N10E 11lks., 6" Maple S20E 6lks. In 1908 Brooks visited the 1/4 Corner, found original BT's gone and set two new ones: 10" Hemlock S61/2E 23lks., 10" Pine N34W 11/2lks. On 12/27/96, Charlie Brinkmeier and Gerry Bahar searched for corner and found no physical evidence other than some pieces of fence and a blazed tree which we used for alignment. We used a proration from the S1/4 of Sec 14 through the E-W 1/4 line of Section 14 to set this corner. We did not look for the Center of Sec 14 but used the E-W 1/4 line as our proration basis.

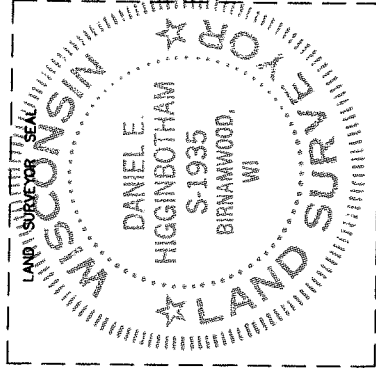
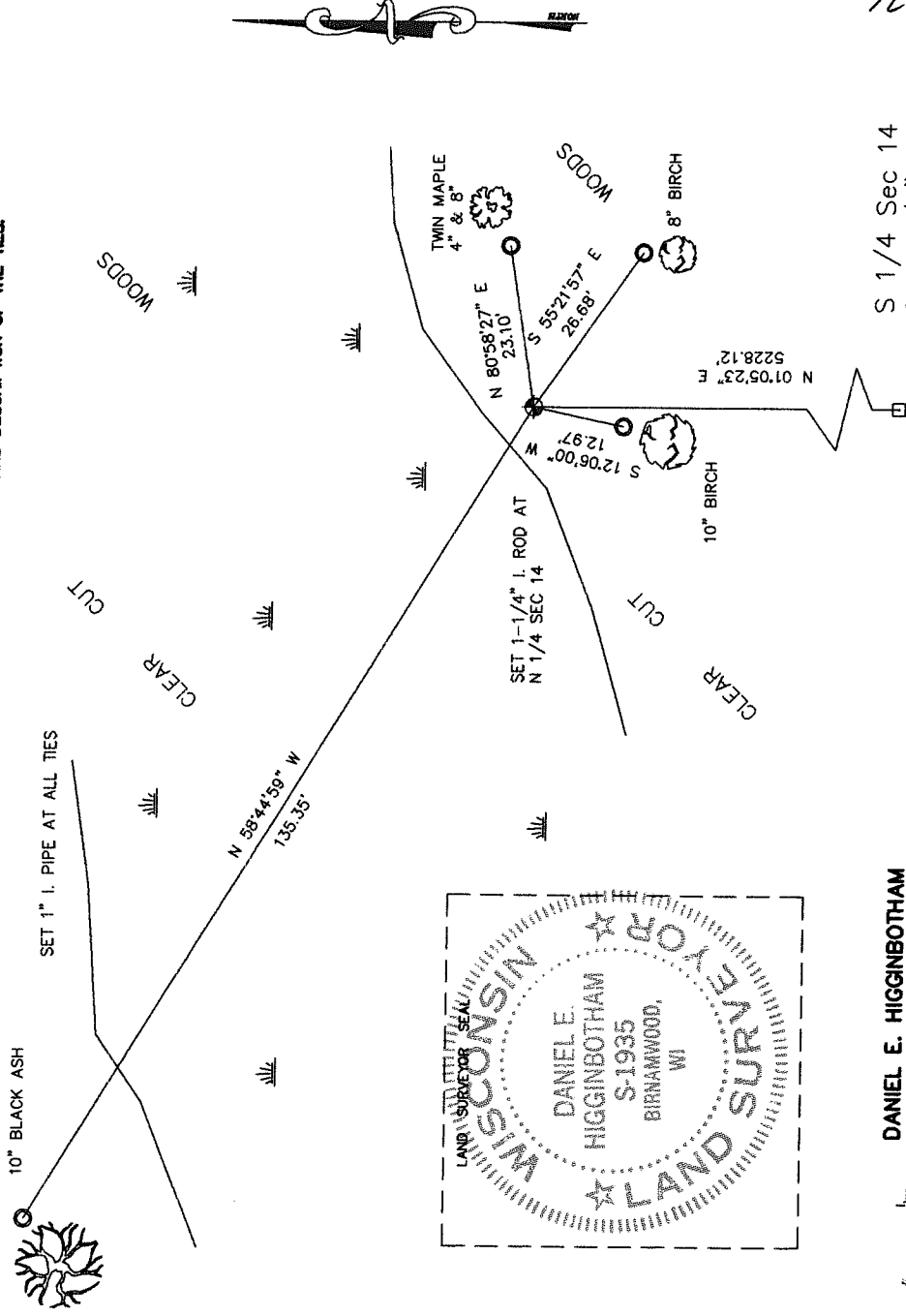


SECTION 14
 TOWNSHIP 32 NORTH, RANGE 11 EAST
 TOWN OF NEVA
 LANGLADE COUNTY, WISCONSIN

CORNER WAS: (CHECK ALL THAT APPLY)

- RESTORED THROUGH ACCEPTANCE OF AN OBLITERATED EVIDENCE LOCATION
- RESTORED THROUGH ACCEPTANCE OF A FOUND PERPETUATED LOCATION
- CONSIDERED A LOST CORNER AND REESTABLISHED THROUGH LOST CORNER PROPORTIONATE METHODS (INCLUDE A PLAN VIEW DRAWING SHOWING DISTANCES AND DIRECTIONS TO OTHER PUBLIC LAND SURVEY CORNERS USED FOR PROPORTIONING AND DETERMINING THE CORNER LOCATION)
- RESTORED OR REESTABLISHED IN A LOCATION THAT DIFFERS FROM A PREVIOUS RESTORATION OR REESTABLISHMENT (INCLUDE A PLAN VIEW DRAWING AND INDICATE WHAT WAS SET AND/OR FOUND)
- CHECK IF THERE IS ADDITIONAL INFORMATION ON BACK

DESCRIBE THE MONUMENT AND ACCESSORIES USED TO PERPETUATE THE LOCATION OF THE CORNER. (INCLUDE A PLAN VIEW DRAWING AND INDICATE WHAT WAS SET AND/OR FOUND) ALSO INCLUDE FOUR TIES TO THE SECTION CORNER AND DESCRIPTION OF THE TIES.



DANIEL E. HIGGINBOTHAM

(Type or print name) CERTIFY THAT THE CORNER LOCATION SHOWN ON THIS RECORD WAS DETERMINED BY ME OR UNDER MY DIRECTION AND CONTROL AND THAT THIS U.S. PUBLIC LAND SURVEY MONUMENT RECORD IS CORRECT AND COMPLETE TO THE BEST OF MY KNOWLEDGE AND BELIEF.

SIGNATURE *Daniel E. Higginbotham* DATE 2/27/03

S 1/4 Sec 14
 SET 11/4" ROD

J19
 32-11 INDEX NO.