

LANGLADE COUNTY U.S. PUBLIC LAND CORNER RESTORATION

The Southeast corner of Section 11, T. 32 N., R. 11 E., Langlade County, WI.

Corner was: (check all that apply)

- Restored through acceptance of an obliterated evidence location.
- Restored through acceptance of a found perpetuated location.
- Determined to be lost and re-established through proportionate methods.
- Show bearings and distances to PLSS corners used for proportioning, and show original distances).
(Show difference in plan view below).
- Check here if additional information is shown on the reverse side of this form.

4321111 0000 2018

Describe record evidence, recovered physical evidence, occupational evidence, testimonial evidence and all other evidence considered in the recovery/restoration of the corner.



The original corner was established in 1860 by Hiram Fellows. Original bearing trees: sugar, 6", N28W, 15lks and a birch, 30", S65E, 30 lks. In 1887, Dorr mentioned 12" sugar, N87W, 8 links. In 1888, Dorr measured 2666.4' to the corner to the south. A year later, 1889, Dorr measured 2678.3 to the corner to the north. In 2002, Gene Uttech established this corner by proportioning North-South, holding the West 1/4 corner of Section 13 to the south and holding a fence (running east) a quarter mile north of this spot, using Dorr's distances as a basis for proportioning. (Note that Uttech's 3/4 mile distance here was 74.65 feet longer than what Dorr measured in 1888 & 1889. It looks like the fence location to the north - if actually set as a result of Dorr's survey - may have been erroneously set by 1 chain.) In 2011, I reviewed the Uttech information and did additional field work after a landowner in Section 12 asked about his corners. In 2012, at Dorr's distance north of the E1/4 corner of Section 13, I found what I think is Dorr's maple stump he mentioned in 1887. The 24" - 26" maple stump is unique in that it's the only stump of this character in the area. That leads me to believe that it was known to be a marked bearing tree and therefore preserved by the surrounding owners for many years until it eventually died and fell over or was taken down. The N-S fence here is very old, and maybe was set as a result of the Dorr survey work. Dorr called for the stump to be N87W, 5.3 feet from the corner. It's happened that a surveyor has reversed bearings on bearing trees and because of the age of the fence, I believe that is what happened here. I established this corner at N87W, 5.3 feet from the recovered maple stump, and in the hole of a rotted out fence post. Wire on the ground here indicates that barbed wire was wrapped around this post, a good probability that this was an end fence post. The resulting distance to the quarter corner to the south is 2664.9', which works well with Dorr's 1888 distance of 2666.4'; a difference of only 1.5'. At the corner location, I set the monument described below.

Physical description of the monument set:

To mark the corner, I set a 2" x 30" iron pipe with brass cap stamped to identify corner.
Set white vinyl sign post 0.4' north of corner monument.

Describe the accessories used to perpetuate the corner. Include a plan view drawing and accessories found/set. Describe measuring point on bearing trees. Show any topographic features that would aid in future recovery of the corner.

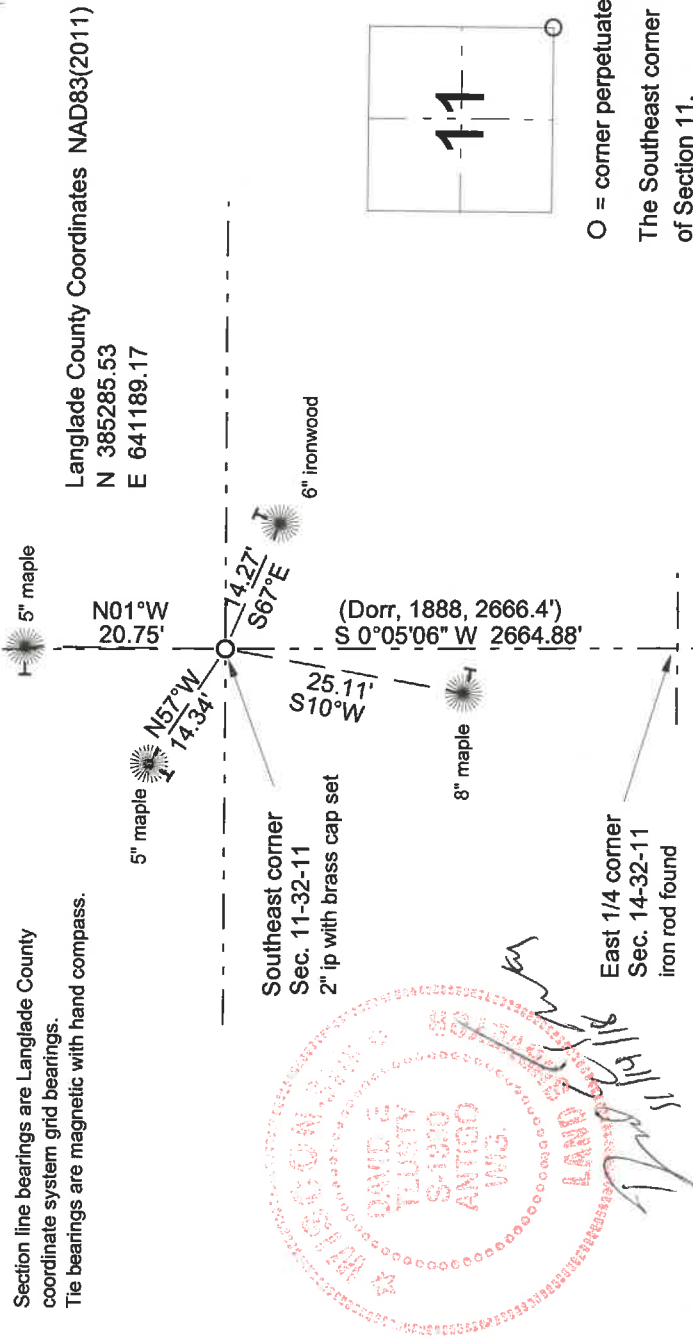
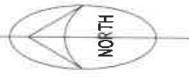
LEGEND

-  2" ip w/brass set - marked with white vinyl sign post
-  aluminum nail set in low side blaze.

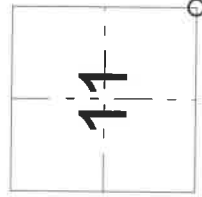
Section line bearings are Langlade County coordinate system grid bearings.

The bearings are magnetic with hand compass.

Field book 20-45



Index No. J21 32-11



○ = corner perpetuated
The Southeast corner of Section 11,
T. 32 N., R. 11 E.,
Langlade County, WI

I, David E. Tusty, Registered Land Surveyor, as Langlade County Surveyor, certify that the corner location on this record was determined by me and that this U.S. Public Land Survey Monument Record is correct to the best of my knowledge and belief.