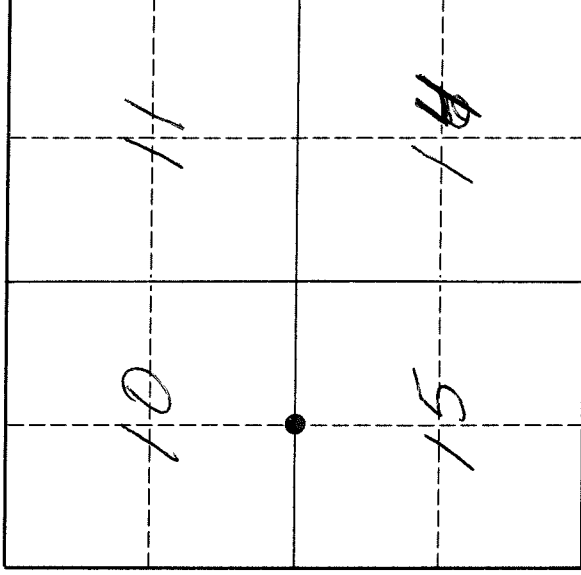


U. S. PUBLIC LAND SURVEY MONUMENT RECORD

I N S T R U C T I O N S:

- (a) Identify the corner by reference to the U.S. public land survey system.
 - = Corner monument restored.
- The South 1/4 corner of Section 10, Township 32 North, Range 11 East, Langlade County, Wisconsin.

This record shall show the location of the corner and shall include all of the following nine elements (a through i).



T. 32 N., R. 11 E.

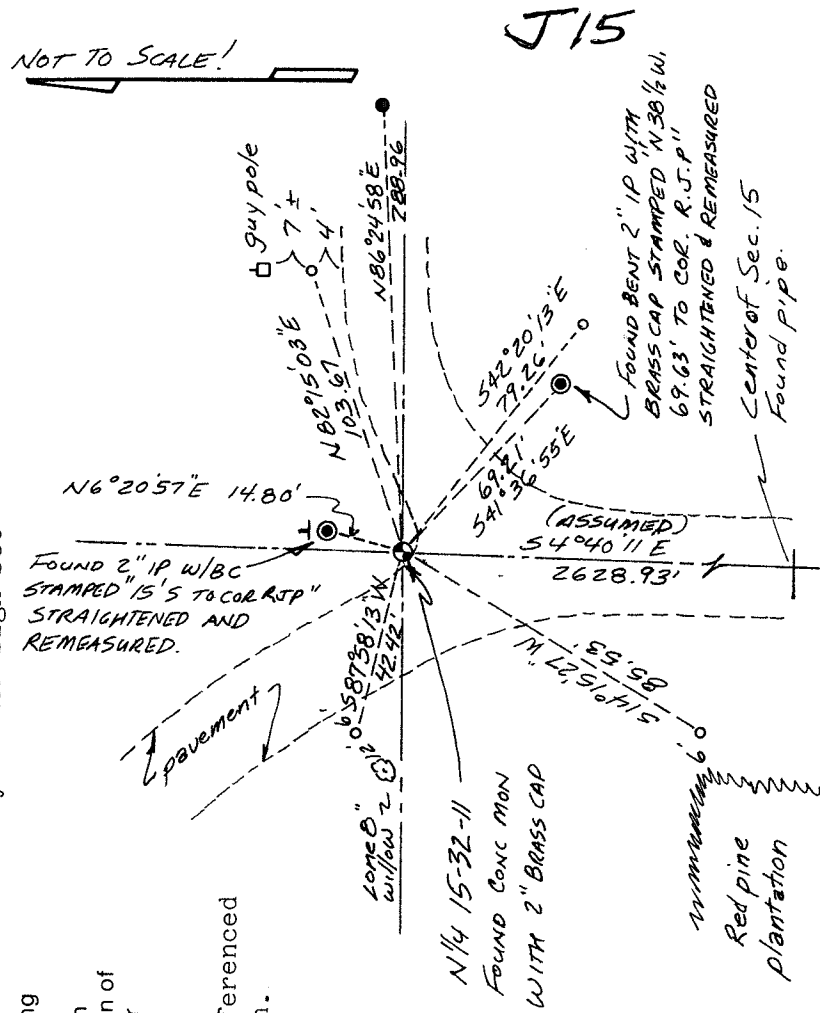
- (b) Describe any record evidence, monument evidence, occupational evidence, testimonial evidence or any other material evidence you considered, and whether the monument was found or placed.

The original corner was established in 1860 by Hiram C. Fellows. Original BT's: hemlock, 12", N65W, 16 lks., and a hemlock, 16", S02E, 13 lks. In 1920, Hutchinson couldn't find the corner and set a cedar post with mound of stones by single proportionate measure. In 1921, Webley found stake and stone pile. In 1938, Hutch found iron staff with cog wheel and marked stone N44½E, 52. In 1970, Ray Hallisy found old pipe underground and Hutch's stone to the NE. Hallisy set a 2" iron pipe with brass cap in cement monument 4" x 2'. 08/30/95 D. Tlusty found concrete monument with 2" brass cap. Also found 2 - 2" iron pipes with brass caps for witness monuments set by Poss. I accept brass cap in concrete as the best evidence of the corner. I straightened Poss's witness monument which were both bent and added other witness monuments as shown below.
- (c) In the plan view drawing below, provide reference ties to at least 4 witness monuments, or, if the location is within a municipality, to at least 2 witness monuments. (Witness monuments shall be made of concrete, natural stone, iron or other equally durable material.)

Describe witness monuments.

 - = 3/4" x 30" re-bar with red plastic cap set flush with ground
 - = 1" iron pipe found
 - ⊥ = white vinyl sign post with survey marker sign set
- (d) Show a plan view drawing depicting the relevant monuments and reference ties which is sufficient in detail to enable accurate relocation of the corner monument if the corner monument is disturbed. Indicate north.

Bearings assumed and referenced to N-S 1/4 line as shown.



Describe any material discrepancy between the location of the corner as restored or reestablished and the location of that corner as previously restored or reestablished by distance and direction. Show the discrepancy on the plan view drawing under (d), above. Show the distances between the corner as previously restored or reestablished and (1) the corner as restored or reestablished, and (2) to at least 2 of the witness monuments shown on the drawing in (d), above.

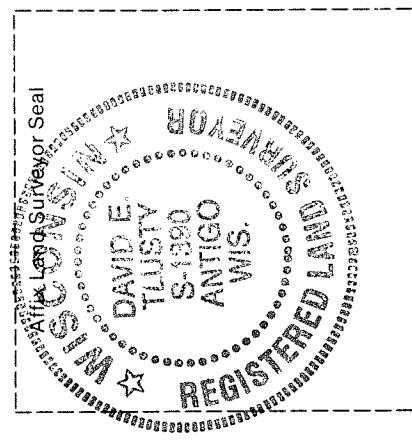
No discrepancy.

(f) Was the corner restored through acceptance of (1) an obliterated evidence location, or, (2) a found perpetuated location.?

A found perpetuated location

(g & h) Was the corner reestablished through lost corner proportionate methods? If so, show the method, including the directions and distances to other public land survey corners used as evidence or used for proportioning in determining the corner location.

No.



(i) I, David E. Tlusty, Langlade County Surveyor,
(type or print name)

certify that the corner location shown on this record was determined by me or under my direction and control and that this U.S. Public Land Survey Monument Record is correct and complete to the best of my knowledge and belief.

David E. Tlusty 12/6/95
Signature Date