

U.S. PUBLIC LAND SURVEY MONUMENT RECORD

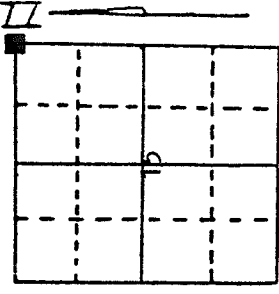
Note: This form is intended and designed to fulfill all requirements of Wisconsin Administrative Code, Chapter A-E 5.02, U.S. Public Land Survey Monument Record (3) (a) (b) (c) (d) (e) (f) (g) (h) (i). An additional sheet may be added if necessary to conform with said requirements.

(a) Corner location: Township 32 North

Range 11 East

Town/City/Village NEVA

County LANGLADE

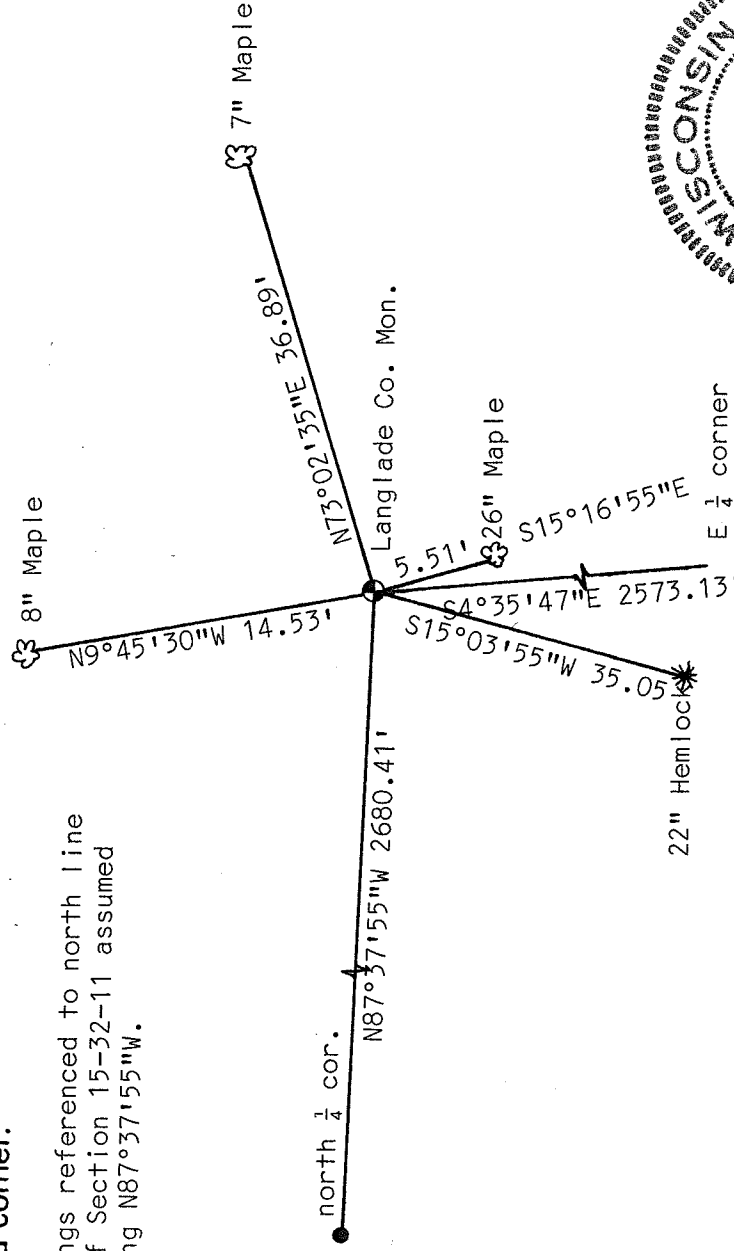


Section 15

(b) (f) (g) (h) Description of monument found at this corner and if it was accepted, state all evidence (material, testimonial, occupational, plats, records, other monuments) used as a basis for accepting. If not accepted or if nothing was found, state evidence used as basis for establishing location. If reestablished through lost corner proportionate methods, indicate all monuments, distances and directions used to establish.

Traversed from center and north $\frac{1}{4}$ corners of section 15 to approximate location. Found 1" X 50" iron pipe at fence intersection in wooded area at the edge of a wet area. Found no other evidence. Accepted iron pipe as correct corner. Removed iron pipe and replaced with Langlade Co. $1\frac{1}{2}$ " brass cap Monument. Tied same.

(c) (d) (e) Plan view of corner with ties to at least 4 witness monuments. If in disagreement with previously established corner, show the distances between the two corners and also indicate the ties to the disputed corner.



(f) I, Edwin R. Abendroth

(type or print name) certify that the corner location on this record was determined by me or under my direction and control and that this U.S. Public Land Survey Monument Record is correct and complete to the best of my knowledge and belief.

Edwin R. Abendroth

October 20, 1995

Signature

Date

Index No. J17

