

CERTIFIED LAND CORNER RESTORATION

Index No. F-10

State of Wisconsin }  
County of LANGLADE } ss.

History of original corner establishment:

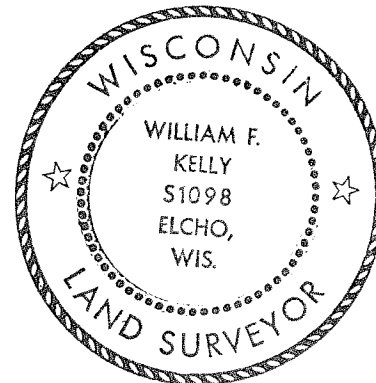
NONE.

I WILLIAM F. KELLY, do hereby certify that on the 8<sup>th</sup> day of JUNE, 19 80, I found evidence of the NW 1/4 corner of SECTION 9 Township 32, North, Range 11 EAST, Fourth Principal Meridian, as described hereon; and that from this evidence I established a new monument and accessories as described hereon to perpetuate the original location of this corner.

Description of corner evidence found:

NONE.

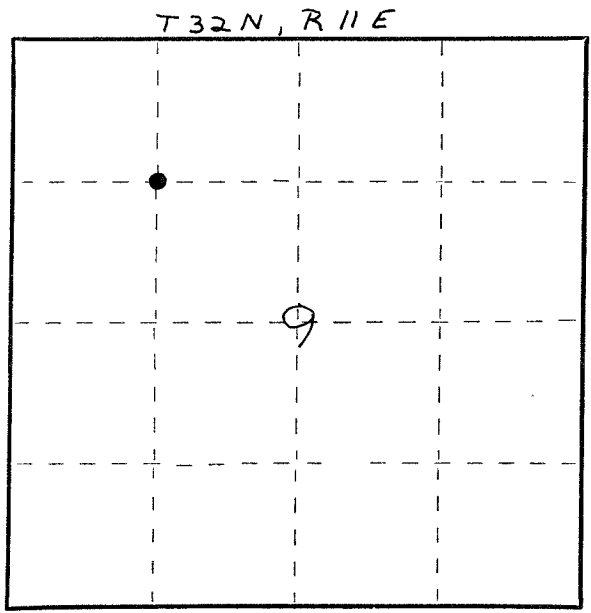
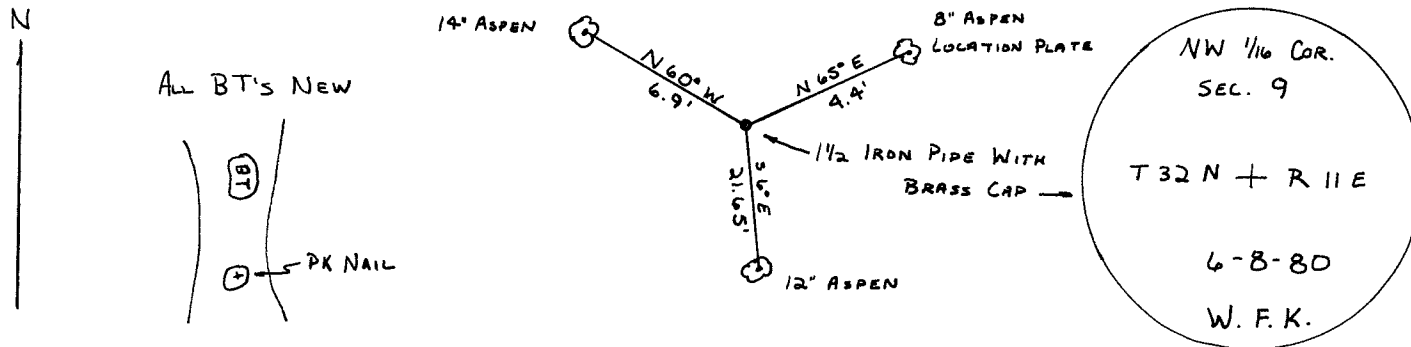
SET 1 1/2" x 42" IRON PIPE WITH BRASS CAP AT THE MD. PT. OF NW 1/4, SECTION 9, T32N, R11E.



*William F. Kelly*

Resident witnesses:

Description of monument and accessories I established to perpetuate the original location of this corner.



Dated at ELCHO, Wis., this 17<sup>th</sup> day of JUNE, 19 80.

Signature William F. Kelly Title County Surveyor Registration No. S-1098  
(County Surveyor, Registered Land Surveyor, or other duly authorized official)

Office of Register of Deeds, County of \_\_\_\_\_, I hereby certify that the within instrument was filed in this office for record on the \_\_\_\_\_ day of \_\_\_\_\_, 19 \_\_\_\_\_ at \_\_\_\_\_ o'clock \_\_\_\_\_ M.

(Register of Deeds)

By \_\_\_\_\_ Deputy

○ = Corner monument restored.

FORM 985 H. C. MILLER CO., MILWAUKEE