

CERTIFIED LAND CORNER RESTORATION

Index No. F-11

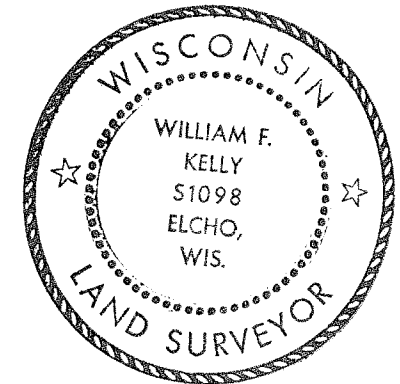
State of Wisconsin }  
 County of LANGLADE } ss.

History of original corner establishment:  
NONE.

I WILLIAM F. KELLY, do hereby certify that on the 6<sup>th</sup> day of JUNE, 1980, I found evidence of the N. 1/8 corner of Sec. 9 Township 32, North, Range 11 EAST, Fourth Principal Meridian, as described hereon; and that from this evidence I established a new monument and accessories as described hereon to perpetuate the original location of this corner.

Description of corner evidence found:  
NONE.

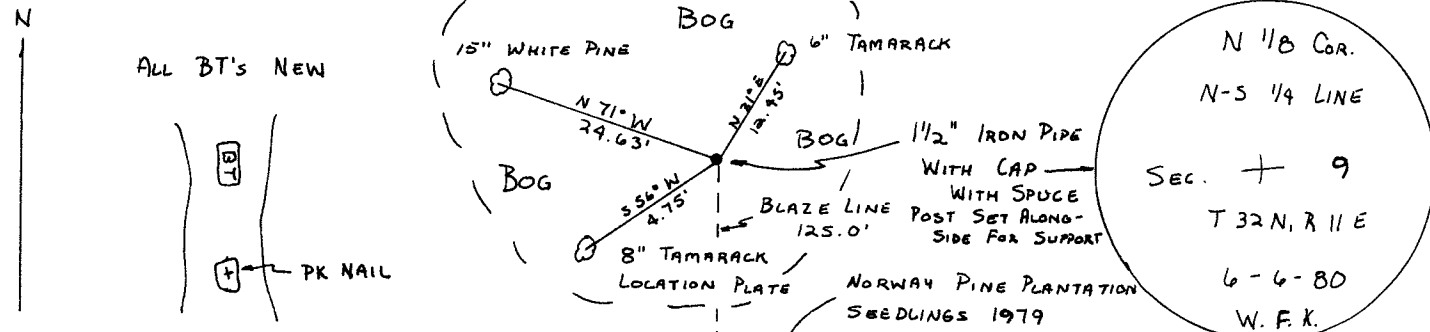
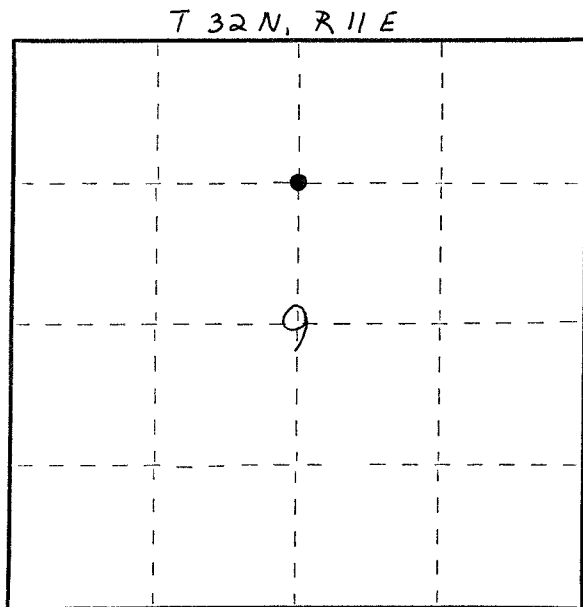
SET 1 1/2" x 42" IRON PIPE WITH BRASS CAP AT MD. PT. BETWEEN CENTER OF SECTION AND NORTH 1/4 CORNER.



*William F. Kelly*

Resident witnesses:

Description of monument and accessories I established to perpetuate the original location of this corner.



Dated at ELCHO, Wis., this 12<sup>th</sup> day of JUNE, 1980

Signature William F. Kelly Title County Surveyor Registration No. 5-1098  
 (County Surveyor, Registered Land Surveyor, or other duly authorized official)

Office of Register of Deeds, County of \_\_\_\_\_, I hereby certify that the within instrument was filed in this office for record on the \_\_\_\_\_ day of \_\_\_\_\_, 19\_\_\_\_ at \_\_\_\_\_ o'clock \_\_\_\_\_ M.

(Register of Deeds)

By \_\_\_\_\_ Deputy

○ = Corner monument restored.