

CERTIFIED LAND CORNER RESTORATION

Index No. G-10

State of Wisconsin }
 County of LANGLADE } ss.

History of original corner establishment:
 NONE.

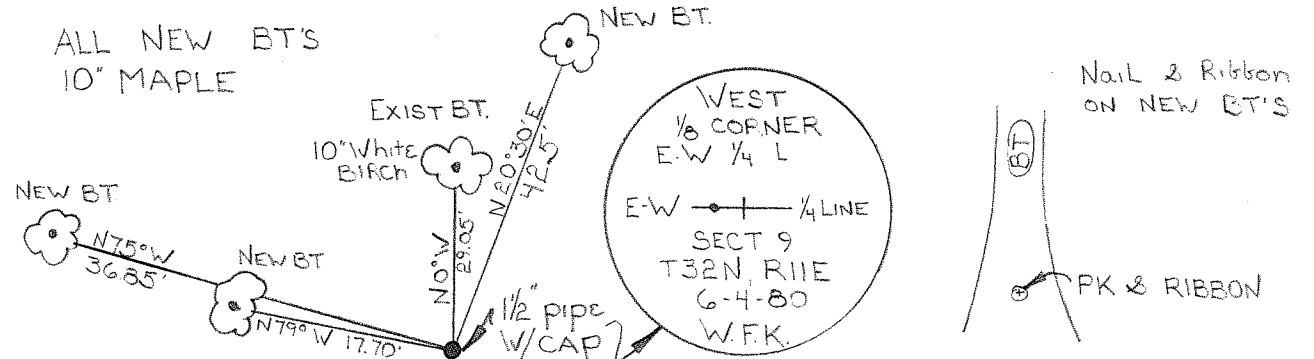
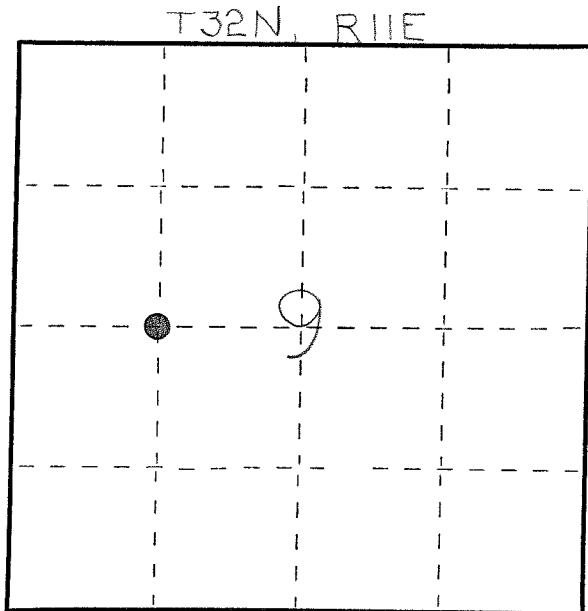
I WILLIAM F. KELLY, do hereby certify that on the 19th day of OCTOBER, 1984, I found evidence of the W. 1/8 CORNER, E-W 1/4 LINE corner of SECT. 9 Township 32, North, Range 11 EAST, Fourth Principal Meridian, as described hereon; and that from this evidence I established a new monument and accessories as described hereon to perpetuate the original location of this corner.

Description of corner evidence found:
 CORNER SET JUNE 4th, 1980 BY W.F. KELLY.
 NEW BT'S ESTABLISHED TO REPLACE DESTROYED BT'S, OCT., 1984.

Resident witnesses:

Description of monument and accessories I established to perpetuate the original location of this corner.

FORM 985 R. C. MILLER CO., MILWAUKEE



Dated at ELCHO, Wis., this 19th day of OCTOBER, 1984.

Signature William F. Kelly Title COUNTY SURVEYOR Registration No. 1098
 (County Surveyor, Registered Land Surveyor, or other duly authorized official)

Office of Register of Deeds, County of _____, I hereby certify that the within instrument was filed in this office for record on the _____ day of _____, 19____ at _____ o'clock _____ M.

(Register of Deeds)

○ = Corner monument restored.

By _____ Deputy