

CERTIFIED LAND CORNER RESTORATION

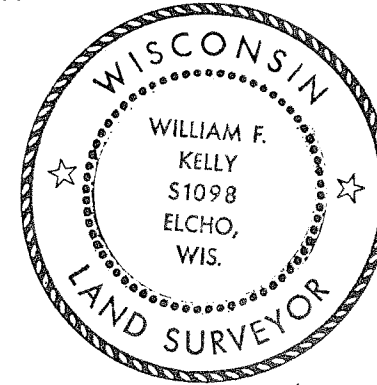
Index No. G-10

State of Wisconsin }  
 County of LANGLADE } ss.

I WILLIAM F. KELLY, do hereby certify that on the 4<sup>TH</sup> day of JUNE, 19 80, I found evidence of the WEST 1/8 CORNER ON E-W 1/4 LINE corner of SECTION 9 Township 32, North, Range 11 EAST, Fourth Principal Meridian, as described hereon; and that from this evidence I established a new monument and accessories as described hereon to perpetuate the original location of this corner.

Resident witnesses:

History of original corner establishment:  
NONE.



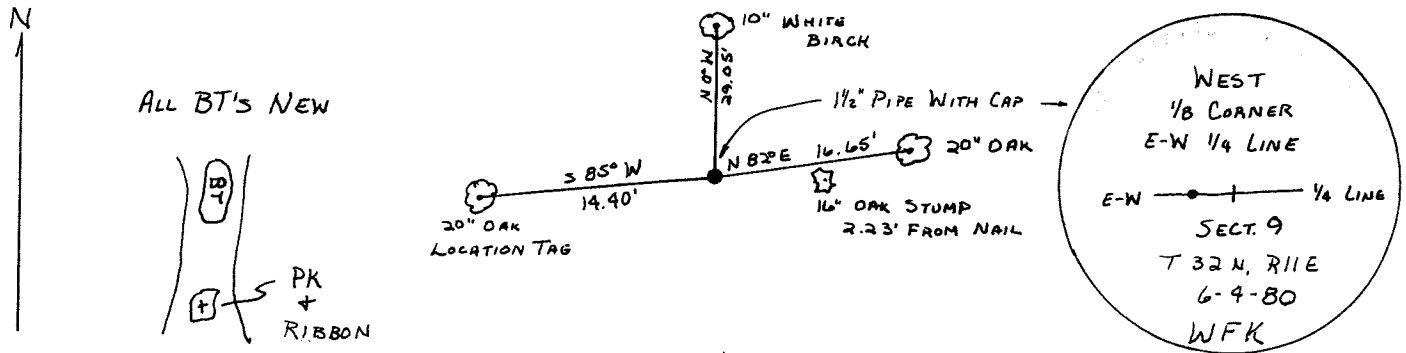
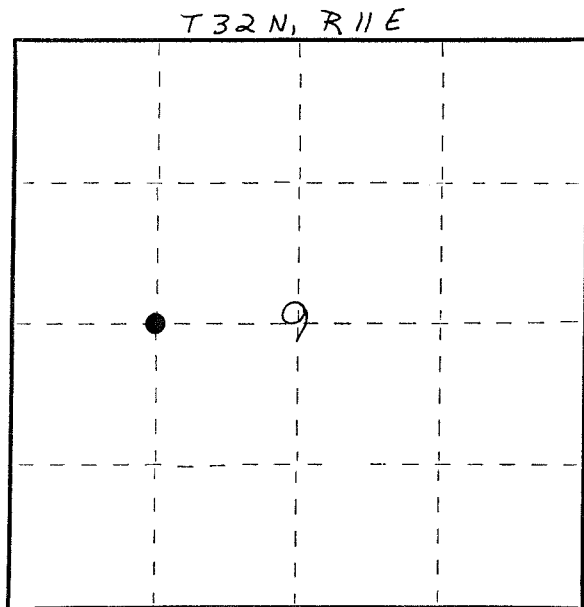
*William F. Kelly*  
 6-16-80

Description of corner evidence found:  
NONE.

CORNER ESTABLISHED AT MIDPOINT BETWEEN CENTER CORNER AND WEST 1/4 CORNER.

SET 1 1/2" x 42" BLACK IRON PIPE WITH BRASS CAP MONUMENT.

Description of monument and accessories I established to perpetuate the original location of this corner.



Dated at ELCHO, Wis., this 10<sup>TH</sup> day of JUNE, 1980.

Signature William F. Kelly Title County Surveyor Registration No. S-1098  
 (County Surveyor, Registered Land Surveyor, or other duly authorized official)

Office of Register of Deeds, County of \_\_\_\_\_, I hereby certify that the within instrument was filed in this office for record on the \_\_\_\_\_ day of \_\_\_\_\_, 19\_\_\_\_ at \_\_\_\_\_ o'clock \_\_\_\_\_ M.

(Register of Deeds)

By \_\_\_\_\_ Deputy

○ = Corner monument restored.