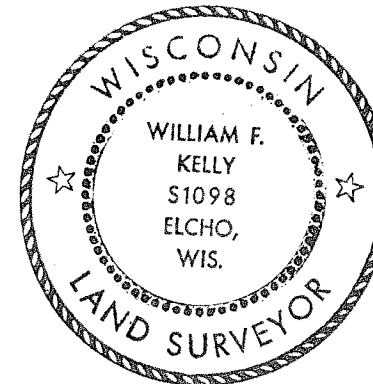


CERTIFIED LAND CORNER RESTORATION

Index No. G-11

State of Wisconsin }
County of LANGLADE } ss.

History of original corner establishment:
NONE.



I WILLIAM F. KELLY, do hereby certify that on the 4TH day of JUNE, 19 80, I found evidence of the CENTER corner of SECTION 9 Township 32, North, Range 11 EAST, Fourth Principal Meridian, as described hereon; and that from this evidence I established a new monument and accessories as described hereon to perpetuate the original location of this corner.

Description of corner evidence found:
NONE.

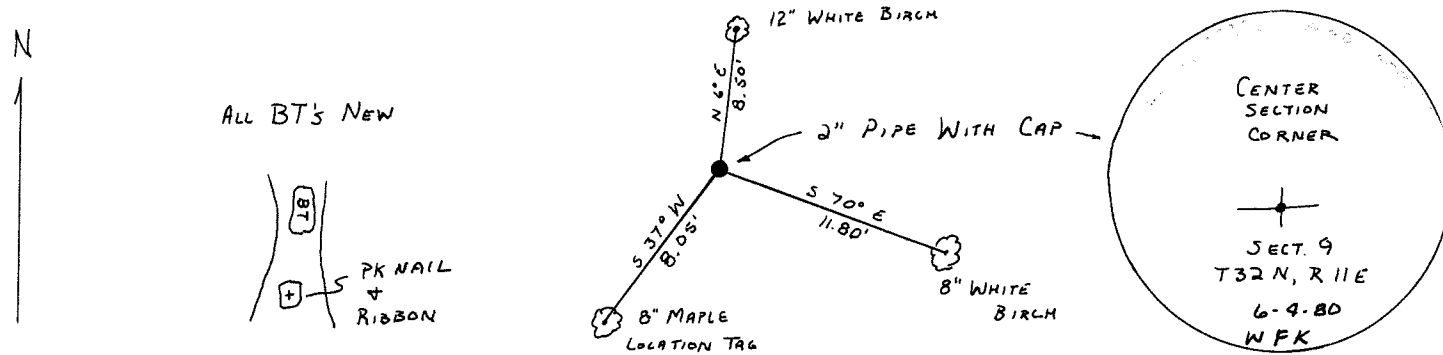
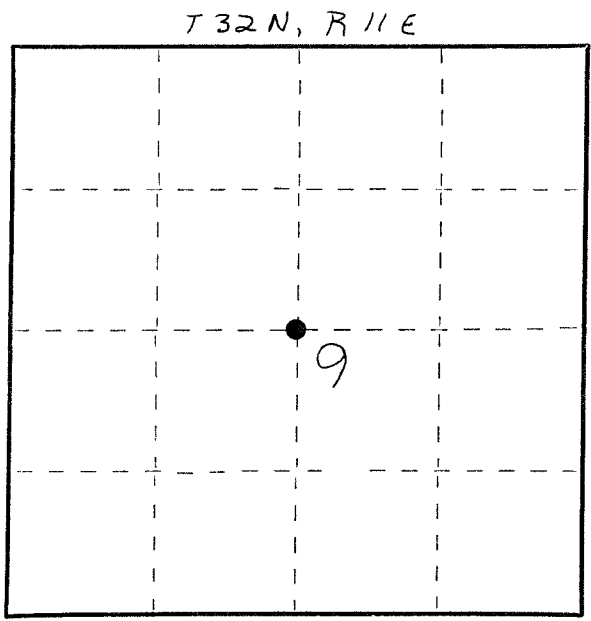
William F. Kelly
6-16-80

CORNER WAS ESTABLISHED BY CONNECTING OPPOSITE 1/4 CORNERS IN SECTION 9.

Resident witnesses:

.....
.....
.....

2" x 42" BLACK IRON PIPE WITH BRASS CAP MONUMENT
Description of monument and accessories I established to perpetuate the original location of this corner.



Dated at Elcho, Wis., this 10TH day of JUNE, 19 80.

Signature William F. Kelly Title County Surveyor Registration No. 5-1098
(County Surveyor, Registered Land Surveyor, or other duly authorized official)

Office of Register of Deeds, County of....., I hereby certify that the within instrument was filed in this office for record on the..... day of....., 19..... at..... o'clock..... M.

(Register of Deeds)

By..... Deputy

○ = Corner monument restored.

FORM 985 H. C. MILLER CO., MILWAUKEE