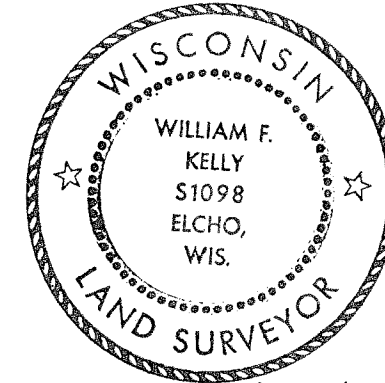


CERTIFIED LAND CORNER RESTORATION

Index No. G-12

State of Wisconsin }
County of LANGLADE } ss.

History of original corner establishment:
NONE.



William F. Kelly
6-16-80

I WILLIAM F. KELLY, do hereby certify that on the 4TH day of JUNE, 1980, I found evidence of the EAST 1/8 CORNER ON E-W 1/4 LINE corner of SECTION 9 Township 32, North, Range 11 EAST, Fourth Principal Meridian, as described hereon; and that from this evidence I established a new monument and accessories as described hereon to perpetuate the original location of this corner.

Description of corner evidence found:
NONE.

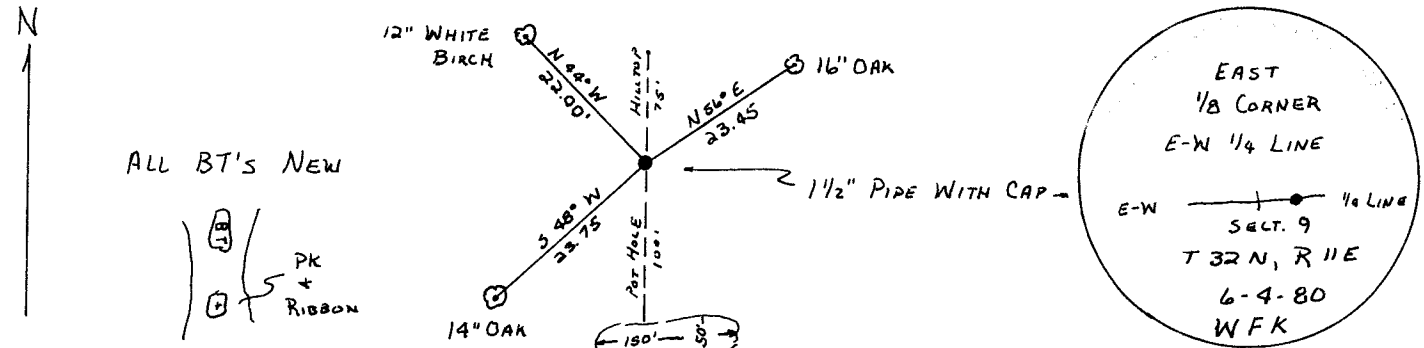
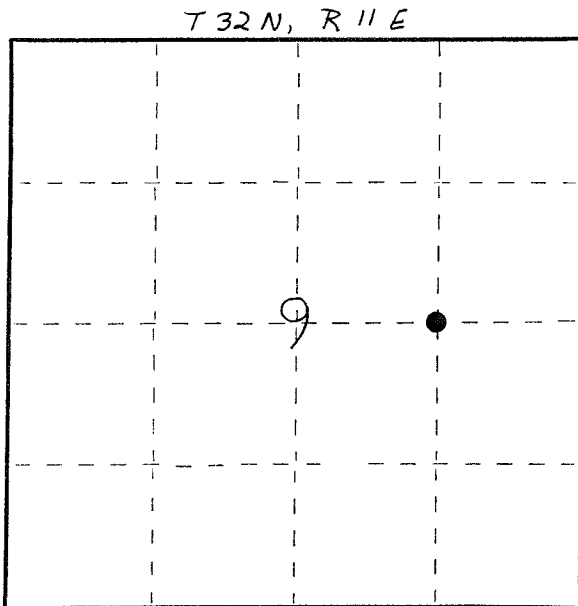
CORNER ESTABLISHED AT MIDPOINT BETWEEN CENTER CORNER AND EAST 1/4 CORNER.

Resident witnesses:

.....
.....
.....

SET 1 1/2" x 42" BLACK IRON PIPE WITH BRASS CAP MONUMENT.

Description of monument and accessories I established to perpetuate the original location of this corner.



Dated at ELCHO, Wis., this 10th day of JUNE, 1980.

Signature William F. Kelly Title County Surveyor Registration No. 5-1098
(County Surveyor, Registered Land Surveyor, or other duly authorized official)

Office of Register of Deeds, County of....., I hereby certify that the within instrument was filed in this office for record on the..... day of....., 19..... at..... o'clock..... M.

.....
(Register of Deeds)

By..... Deputy

○ = Corner monument restored.

FORM 985 H. C. MILLER CO., MILWAUKEE