

CERTIFIED LAND CORNER RESTORATION

32-11  
Index No. H-13

State of Wisconsin }  
County of Langlade } ss.

History of original corner establishment:

I Raymond J. Hallisy, do hereby certify that on the 11th day of May, 1969, I found evidence of the S 1/16 corner of Sec. 10 Township 32, North, Range 11E, Fourth, Principal Meridian, as described hereon; and that from this evidence I established a new monument and accessories as described hereon to perpetuate the original location of this corner.

Description of corner evidence found:

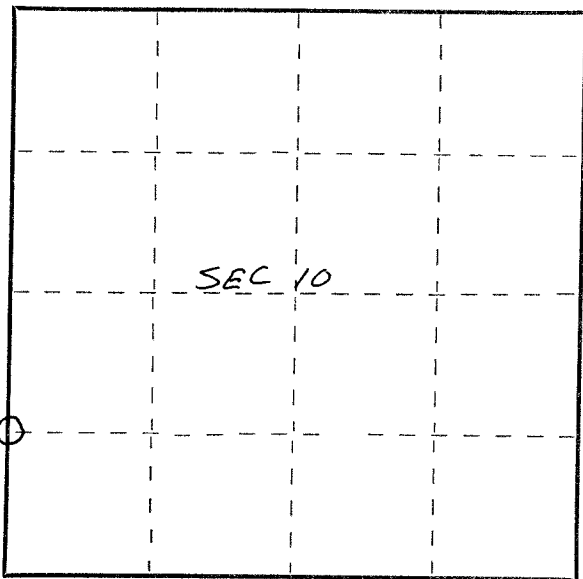
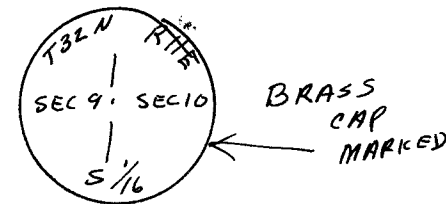
Found old iron pipe and location tag. 6 P W to cor.

Resident witnesses:

.....  
.....  
.....

Description of monument and accessories I established to perpetuate the original location of this corner.

Set 2" pipe with brass cap  
B.T.'s to corner  
Hard Maple 20" N74W 4Ft. 10 inches  
Hard Maple 14" S 19Ft. 6 inches  
B.T.'s faced at base of tree and scribed BT



○ = Corner monument restored.

Dated at Antigo, Wis., this 11th day of May, 19 69.

Signature Raymond J. Hallisy Title Reg. Land Surveyor Registration No. S-685  
(County Surveyor, Registered Land Surveyor, or other duly authorized official)

Office of Register of Deeds, County of....., I hereby certify that the within instrument was filed in this office for record on the..... day of....., 19..... at..... o'clock..... M.

.....  
(Register of Deeds)

By..... Deputy

FORM 985 H. C. MILLER CO., MILWAUKEE