

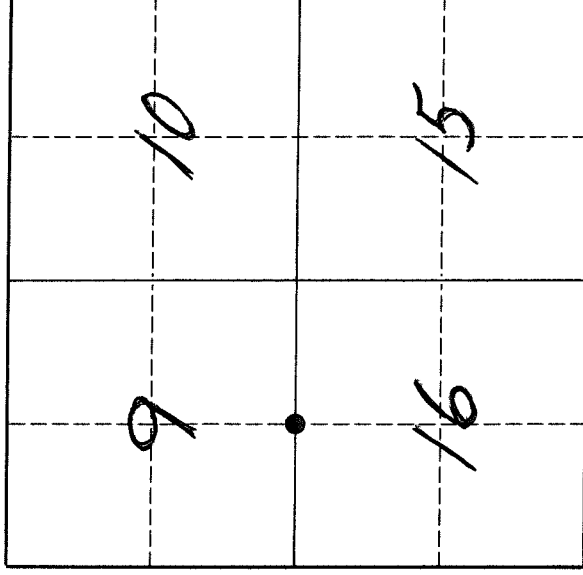
U. S. PUBLIC LAND SURVEY MONUMENT RECORD

I N S T R U C T I O N S:

This record shall show the location of the corner and shall include all of the following nine elements (a through i).

- (a) Identify the corner by reference to the U.S. public land survey system.
- = Corner monument restored.

The South Quarter corner of Section 9, Township 32 North, Range 11 East, Langlade County, Wisconsin.



T. 32 N., R. 11 E.

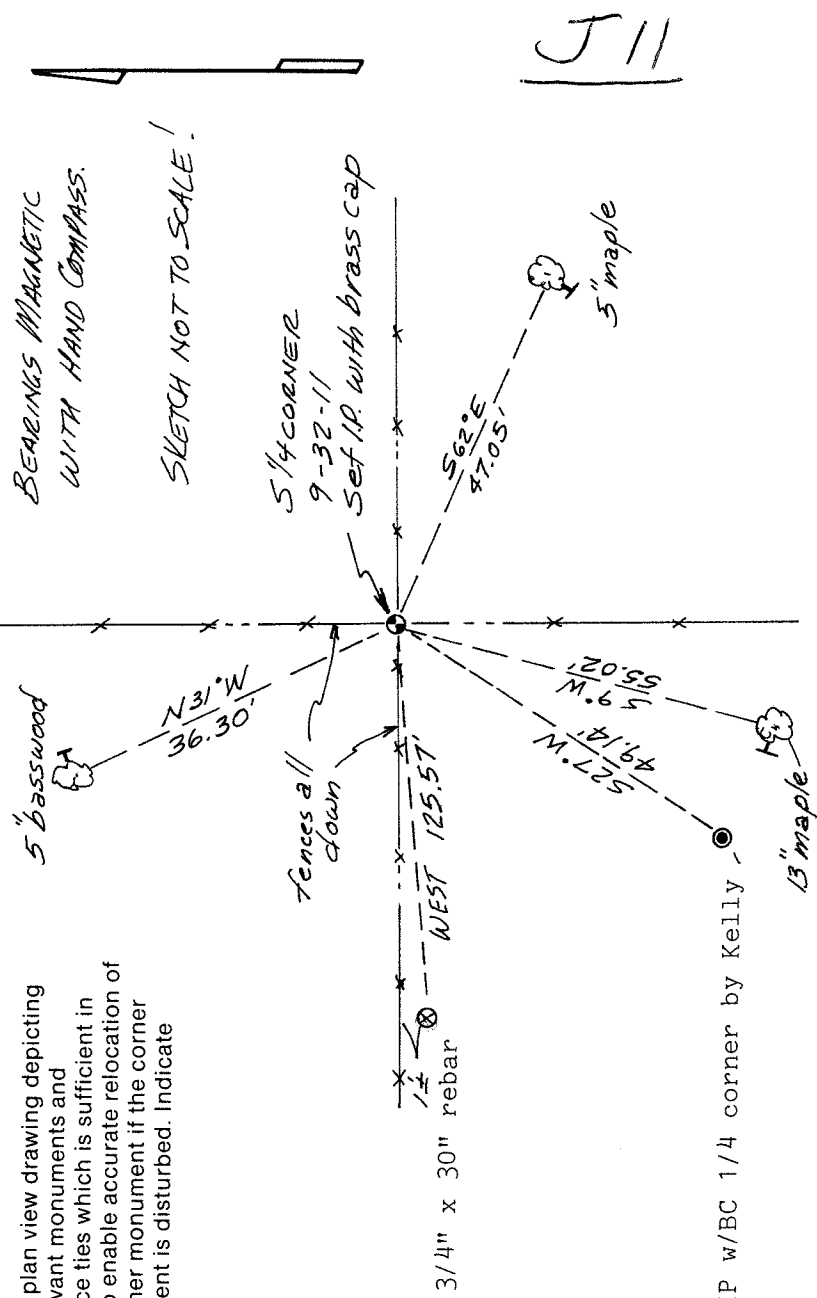
- (b) Describe any record evidence, monument evidence, occupational evidence, testimonial evidence or any other material evidence you considered, and whether the monument was found or placed.

The original corner was established in 1860 by Hiram C. Fellows. Original BT's: sugar, 7", N28E, 10 lks., and a hemlock, 12", S29W, 43 lks. Around 1886, B.F. Dorr, FB105-49, marked pine stumps: 30", S88W, 69 lks. (45.5') and 28", N57E, 40 lks. (26.4'). In 1910, Brooks, found stake by "and old BT by former surveyor" pine s. 24" N77½E, 39 lks. (25.8'). In 1980, former surveyor Kelly set a quarter corner here by single proportionate measurement between a wrong SW corner of Section 9 and the SE corner of Section 9. He set a 2" iron pipe with brass cap which he indicated to be S29W+, 44.79' from a fence corner. 09/08/1995, D. Tlusty, recovered old fence corner post hole from which fences run N,S, E & W, all down. From this corner post hole, @ N77E, 25.8' found good old pine stump in agreement with stump found by Brooks. At N 46E, 14.5' from corner post hole, found old pine stump with re-growth of w.

- (c) In the plan view drawing below, provide reference ties to at least 4 ^(continued on reverse) witness monuments, or, if the location is within a municipality, to at least 2 witness monuments. (Witness monuments shall be made of concrete, natural stone, iron or other equally durable material). Describe witness monuments.

⊕ = new BT. Measured to Alum. nail in low blaze on side shown (▲), painted blue with Bearing Tree Sign.

- (d) Show a plan view drawing depicting the relevant monuments and reference ties which is sufficient in detail to enable accurate relocation of the corner monument if the corner monument is disturbed. Indicate north.



2" IP w/BC 1/4 corner by Kelly

