

CERTIFIED LAND CORNER RESTORATION

Index No. J - 11

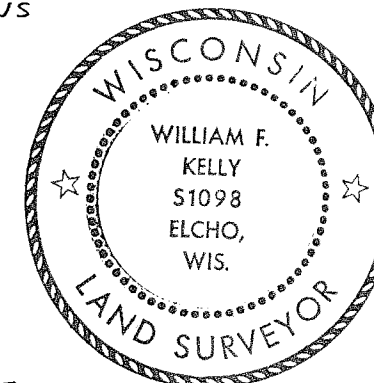
State of Wisconsin }  
 County of LANGLADE } ss.

I WILLIAM F. KELLY, do hereby certify that on the 17<sup>th</sup> day of JUNE, 19 80, I found evidence of the SOUTH 1/4 corner of SEC. 9 Township 32, North, Range 11 EAST, Fourth Principal Meridian, as described hereon; and that from this evidence I established a new monument and accessories as described hereon to perpetuate the original location of this corner.

Resident witnesses:

History of original corner establishment:

ORIGINAL CORNER ESTABLISHED BY HIRAM FELLOWS IN THE 1860'S.



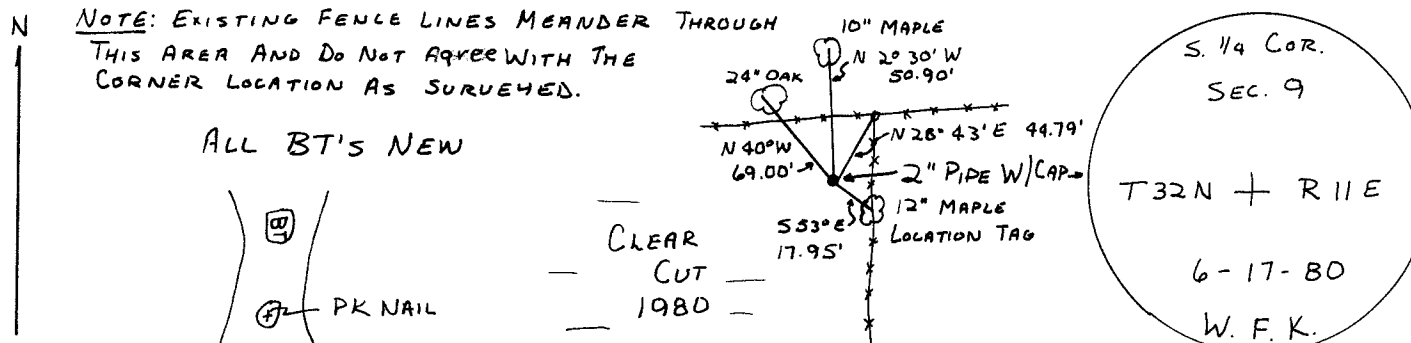
*William F. Kelly*

Description of corner evidence found:

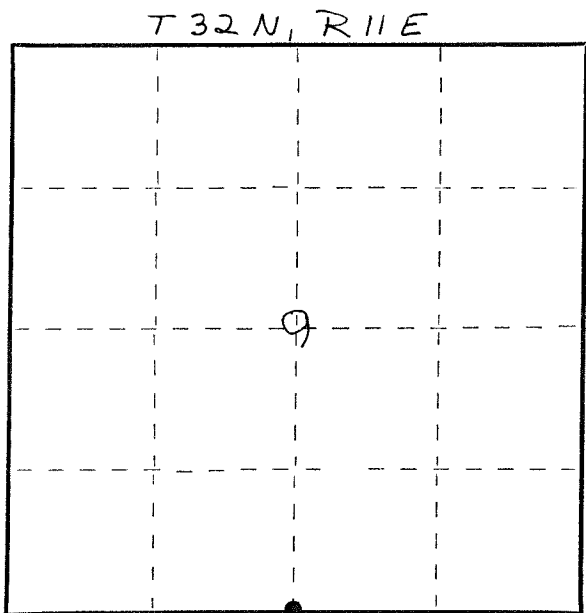
NONE.

SET 2" x 42" IRON PIPE WITH BRASS CAP MONUMENT AT M.D. PT. BETWEEN THE SE AND SW CORNERS OF SEC. 9.

Description of monument and accessories I established to perpetuate the original location of this corner.



FORM 985 H. C. MILLER CO., MILWAUKEE



○ = Corner monument restored.

Dated at ELCHO, Wis., this 18<sup>th</sup> day of JUNE, 19 80.

Signature William F. Kelly Title COUNTY SURVEYOR Registration No. S-1098  
 (County Surveyor, Registered Land Surveyor, or other duly authorized official)

Office of Register of Deeds, County of \_\_\_\_\_, I hereby certify that the within instrument was filed in this office for record on the \_\_\_\_\_ day of \_\_\_\_\_, 19 \_\_\_\_\_ at \_\_\_\_\_ o'clock \_\_\_\_\_ M.

(Register of Deeds)

By \_\_\_\_\_ Deputy