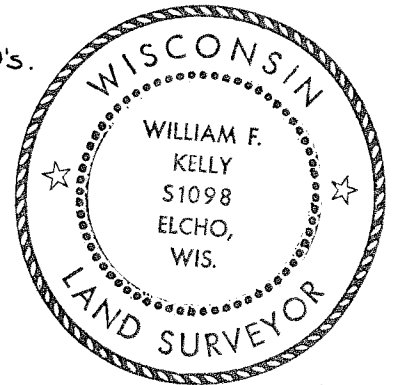


CERTIFIED LAND CORNER RESTORATION

Index No. F-9

State of Wisconsin }
County of LANGLADE } ss.

History of original corner establishment:
ORIGINAL CORNER ESTABLISHED BY HIRAM FELLOWS IN THE 1860'S.



William F. Kelly

I WILLIAM F. KELLY, do hereby certify that on the 8th day of JUNE, 1980, I found evidence of the NORTH 1/8 corner of SECTION 9 Township 32, North, Range 11 EAST, Fourth Principal Meridian, as described hereon; and that from this evidence I established a new monument and accessories as described hereon to perpetuate the original location of this corner.

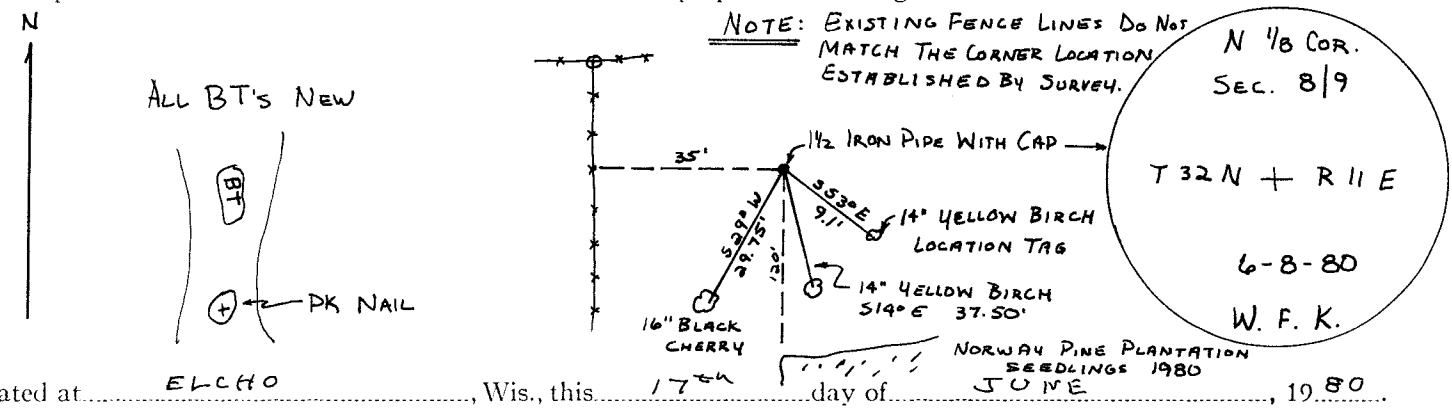
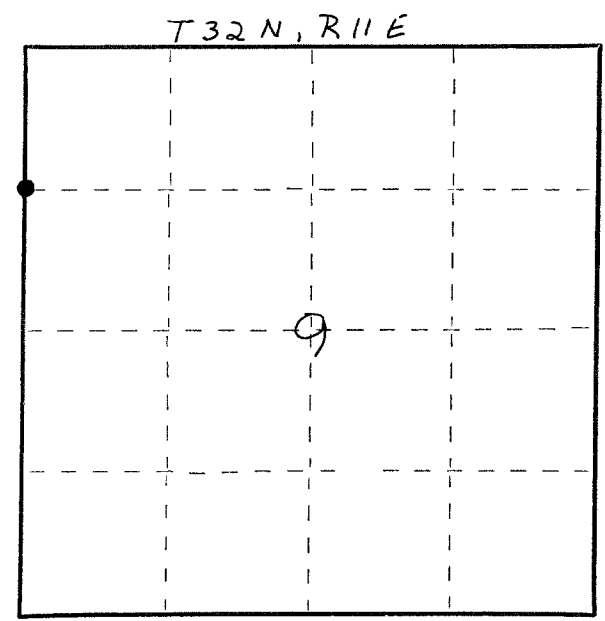
Description of corner evidence found:
NONE.

SET 1 1/2" x 42" IRON PIPE WITH BRASS CAP BY DOUBLE PROPORTIONAL MEASUREMENT AT MD. PT. BETWEEN WEST 1/4 CORNER AND THE NW SECTION CORNER OF SECTION 9, T32N, R11E.

Resident witnesses:

Description of monument and accessories I established to perpetuate the original location of this corner.

FORM 985 H. C. MILLER CO., MILWAUKEE



Dated at ELCHO, Wis., this 17th day of JUNE, 1980.

Signature William F. Kelly Title County Surveyor Registration No. 5 1098
(County Surveyor, Registered Land Surveyor, or other duly authorized official)

Office of Register of Deeds, County of _____, I hereby certify that the within instrument was filed in this office for record on the _____ day of _____, 19____ at _____ o'clock _____ M.

(Register of Deeds)

By _____ Deputy

○ = Corner monument restored.