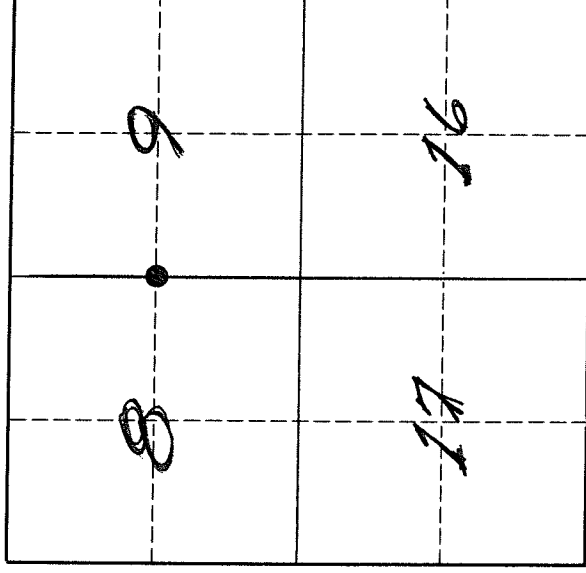


# U. S. PUBLIC LAND SURVEY MONUMENT RECORD

**I N S T R U C T I O N S:**

This record shall show the location of the corner and shall include all of the following nine elements (a through i).

- (a) Identify the corner by reference to the U.S. public land survey system.  
 ● = Corner monument restored.



The West Quarter corner of Section 9, Township 32 North, Range 11 East, Langlade County, Wisconsin.

- (b) Describe any record evidence, monument evidence, occupational evidence, testimonial evidence or any other material evidence you considered, and whether the monument was found or placed.

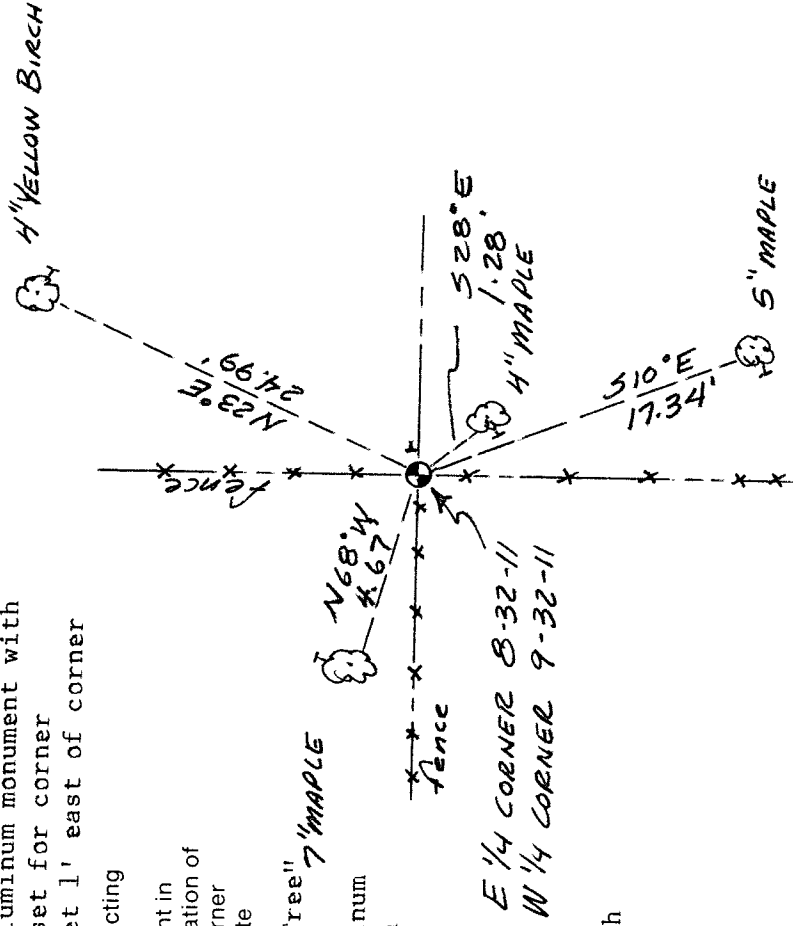
The original corner was established in 1860 by H.C. Fellows. The original bearing trees were: Sugar, 7", S23°E, 12 lks., and a Birch, 10", N 70° W, 7 lks. In November, 1886, B.F. Dorr did survey work in the NW quarter of Section 9 and measured from this corner to the section corner to the north. In November, 1906, Dorr did survey work in the SW quarter of Section 9 and measured from this corner to the section corner to the south. I find fence corners that agree with Dorr's measurements along the West line of Section 9. Mr. Anton Benes, owner of the NE 1/4 of Section 8 since 1945, said that the fence corners have been in the same place "all the while he owned the land and all the while Schacher (former owner since 1905) owned it".

- (c) In the plan view drawing below, ~~provide reference ties to at least 4~~ witness monuments, or, if the location is within a municipality, to at least 2 witness monuments. (Witness monuments shall be made of concrete, natural stone, iron or other equally durable material.)

- Describe witness monuments.  
 ● = 2" x 24" capped aluminum monument with iron pipe insert set for corner  
 † = vinyl sign post set 1' east of corner

- (d) Show a plan view drawing depicting the relevant monuments and reference ties which is sufficient in detail to enable accurate relocation of the corner monument if the corner monument is disturbed. Indicate north.

- ⊕ = tree with "Bearing Tree" 7" MAPLE sign facing corner.  
 Distance is to aluminum nail in low blaze on right side of tree.



Bearings magnetic with hand compass.

Describe any material discrepancy between the location of the corner as restored or reestablished and the location of that corner as previously restored or reestablished by distance and direction. Show the discrepancy on the plan view drawing under (d), above. Show the distances between the corner as previously restored or reestablished and (1) the corner as restored or reestablished, and (2) to at least 2 of the witness monuments shown on the drawing in (d), above.

In 1980, former surveyor Wm. Kelly established this corner by proportionate methods and set a monument for the corner (see sketch below). Apparently Mr. Kelly didn't have Dorris notes or he probably would have given more weight to the existing fences in the area.

(f) Was the corner restored through acceptance of (1) an obliterated evidence location, or, (2) a found perpetuated location.?

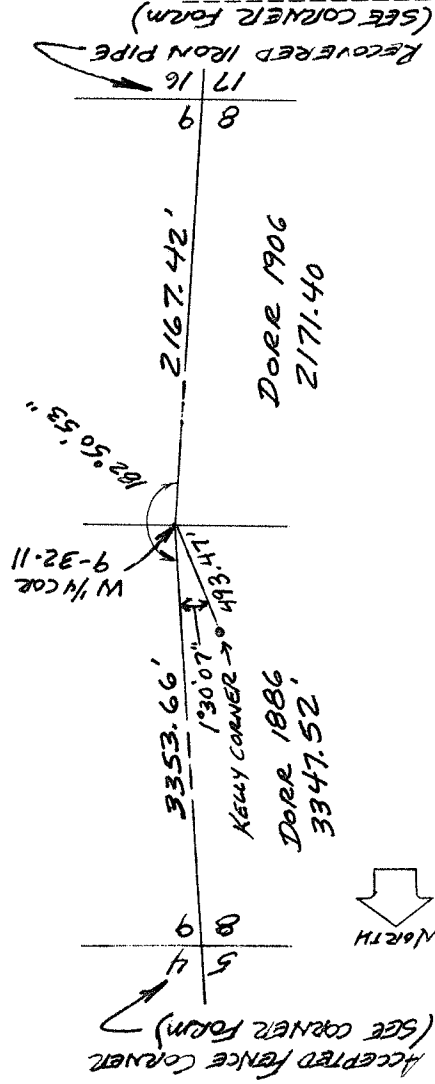
A found perpetuated location - fence corner verified by Mr. Benes, longtime adjoining landowner, from his personal knowledge of the area and statements made to him by the former owner of the property.

(g & h) Was the corner reestablished through lost corner proportionate methods? If so, show the method, including the directions and distances to other public land survey corners used as evidence or used for proportioning in determining the corner location.

(continued from front side)  
Based on the facts:

- 1) that Dorris first survey to this corner was done only 24 years after the original survey and he more than likely used the original corner post;
- 2) Dorris measurements from his first survey (1886) and from his second survey (1906) are in agreement with recent measurements between fence corners along the West line of Section 9;
- 3) that the chain of ownership (Schacher and Benes) of the NE 1/4 of Section 8 could verify that the fences have been in the same place since at least 1905;
- 4) that the distances between other section and quarter section corners in this township vary by as much as 600 to 700 feet from the original government survey; and
- 5) that, although not positively identifiable as original, I find a stump hole to the SE and a stump mound to the NW that match the original ties,

I accept the location of the fence corner as the best evidence of the location of the original quarter corner, and perpetuate said location as shown on the front side of this form.



(i) DAVID E. TLUSTY LANGLADE COUNTY SURVEYOR  
(type or print name)

certify that the corner location shown on this record was determined by me or under my direction and control and that this U.S. Public Land Survey Monument Record is correct and complete to the best of my knowledge and belief.

David E. Tlusty 11/4/93  
Signature Date

