

CERTIFIED LAND CORNER RESTORATION

Index No. G-9

State of Wisconsin }
 County of LANGLADE } ss.

History of original corner establishment:

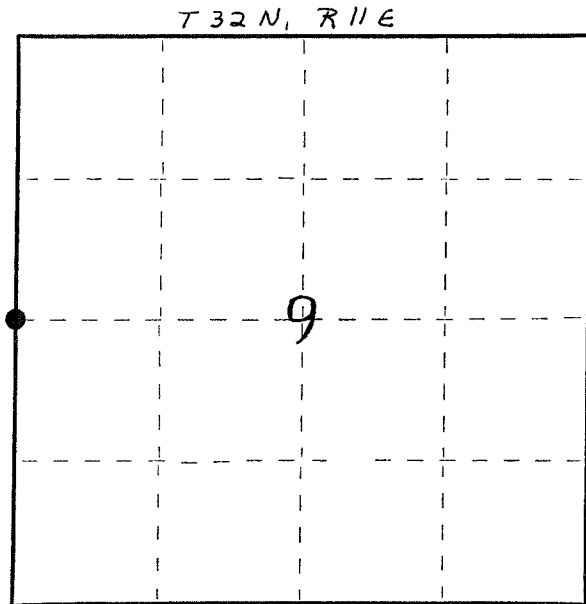
ORIGINAL CORNER SET BY HIRAM C. FELLOWS IN SEPT. 1860.

I WILLIAM F. KELLY, do hereby certify that on the 2ND day of JUNE, 1980, I found evidence of the WEST 1/4 corner of SECTION 9 Township 32, North, Range 11 EAST, Fourth Principal Meridian, as described hereon; and that from this evidence I established a new monument and accessories as described hereon to perpetuate the original location of this corner.

Resident witnesses:

.....

FORM 985 H. C. MILLER CO., MILWAUKEE



○ = Corner monument restored.



William F. Kelly
 6-16-80

Description of corner evidence found:

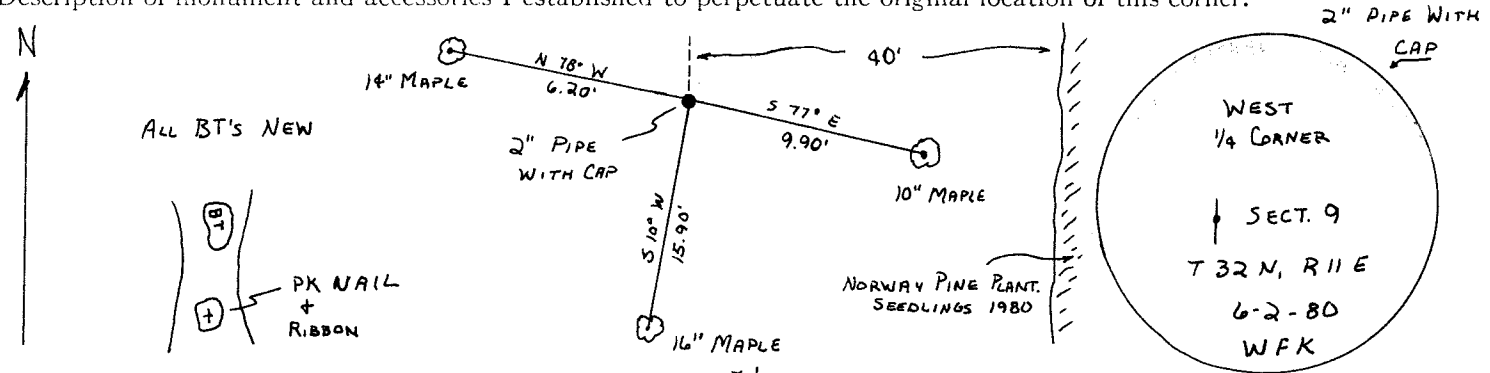
NONE.

CORNER WAS ESTABLISHED BY DOUBLE PROPORTIONING BETWEEN THE NW AND SW CORNERS OF SECTION 9.

NOTE: EXISTING FENCE LINES DO NOT AGREE WITH LOCATION OF CORNER ESTABLISHED BY SURVEY

2" x 42" BLACK IRON PIPE WITH BRASS CAP MONUMENT.

Description of monument and accessories I established to perpetuate the original location of this corner.



Dated at ELCHO, Wis., this 10TH day of JUNE, 1980.

Signature William F. Kelly Title County Surveyor Registration No. 5-1098
 (County Surveyor, Registered Land Surveyor, or other duly authorized official)

Office of Register of Deeds, County of....., I hereby certify that the within instrument was filed in this office for record on the..... day of....., 19..... at..... o'clock..... M.

.....
 (Register of Deeds)

By..... Deputy