

4 321108 0000

# U.S. PUBLIC LAND SURVEY MONUMENT RECORD

(Prepared and as required by S. A-E 7.08 WI Administrative Code)

The SOUTHEAST corner of Section 8, T. 32 N., R. 11 E., Langlade County, WI  
Corner was (check all that apply)

- Restored through acceptance of an obliterated evidence location.
- Restored through acceptance of a found perpetuated location.
- Determined to be lost and re-established through proportionate methods. (show bearings and distances to PLSS corners used for proportioning.)
- Restored/recovered/re-established in a location that differs from a previously established position. (Show difference in plan view below.)
- Check here if additional information is shown on the reverse side of this form.

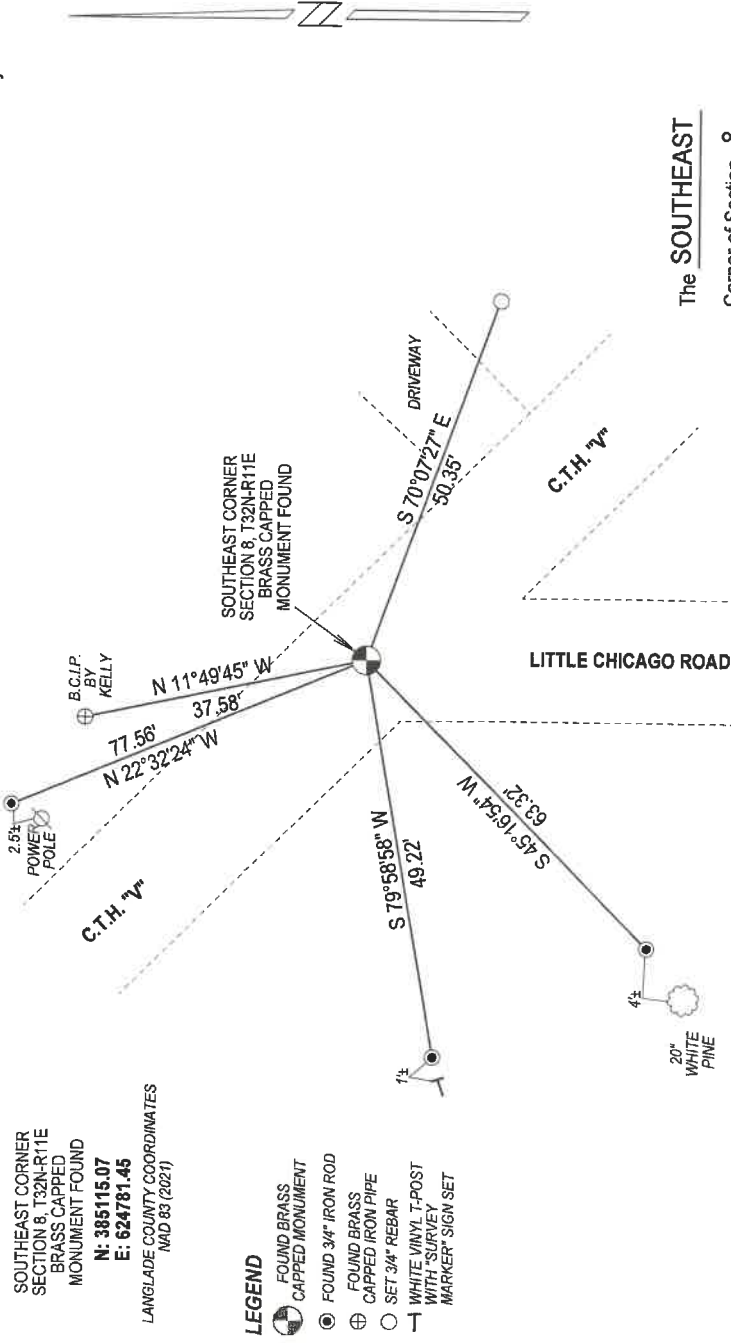
## Describe record evidence, recovered physical evidence, occupational evidence, testimonial evidence, and all other evidence considered in the recovery/restoration of the corner.

1860 - Original corner established by H.C. Fellows - bearing trees: Hemlock, 12", N80°W, 10 links and a Hemlock, 13", S70°E, 11 links.  
 FB-105-49 Hutchinson makes reference that Dorr used Ed's (?) BT's. Brooks had a distance of 73 links (48.18') to BT pine stump West.  
 1980 - W. Kelly located 1" steel bar probably set by Hutchinson and replaced it with a brass capped monument.  
 1993 - D. Tlusty dug in road, and at a depth of 28", found a 1.25" x 7" section of pipe in ground and in good condition. 0.3' West of pipe found, he found an upright wood stick, apparently set at one time to mark the pipe. From the pipe found he measured 48 feet to the face of the remains of a large old pine stump. Don Solin adjoining landowner, told Tlusty that his father always said that the corner was in the road and Kelly's corner was wrong. Tlusty accepted the location of the iron pipe as the corner previously used by Hutchinson, Dorr and Ed (Brooks?).  
 2022 - I found the existing brass capped monument set by Tlusty.

## Physical description of the monument set:

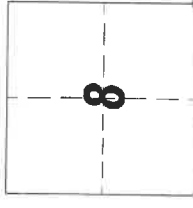
I accept the existing brass capped monument as the corner and tied it out as shown below.

Describe the accessories used to perpetuate the location of the corner. Include a plan view drawing and indicate accessories found/set. Describe measuring point on bearing trees. Show any topographic features that would aid in future recovery of the corner.



NOTES  
 - SKETCH NOT DRAWN TO SCALE.  
 - TIE BEARINGS SHOWN ARE LANGLADE COUNTY GRID BEARINGS.  
 - ALL TIES MEASURED ELECTRONICALLY WITH TOTAL STATION.

The SOUTHEAST  
Corner of Section 8  
T. 32 N., R. 11 E.  
Langlade County, WI



○ = Location of corner



I, Michael J. Hoffman certify that the corner location shown on this record was determined by me or under my direction and control and that this U.S. Public Land Survey Monument Record is correct and complete to the best of my knowledge and belief.

Michael J. Hoffman 12/12/2022 Date  
 Signature

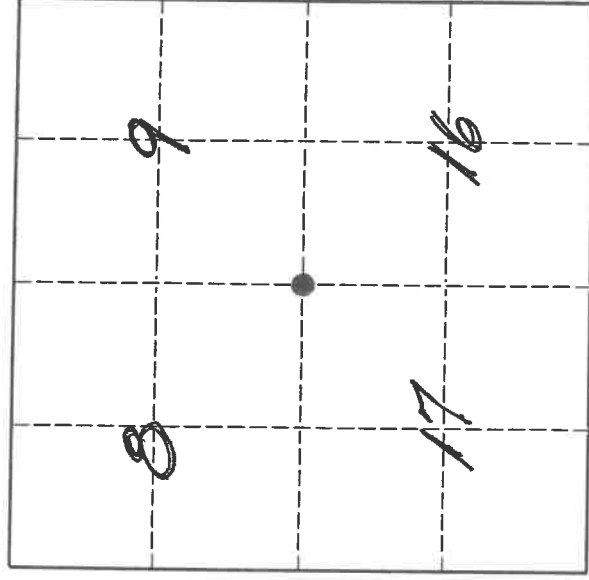
# U. S. PUBLIC LAND SURVEY MONUMENT RECORD

**I N S T R U C T I O N S:**

This record shall show the location of the corner and shall include all of the following nine elements (a through i).

- (a) Identify the corner by reference to the U.S. public land survey system.  
 ● = Corner monument restored.

The Southeast corner of Section 8, Township 32 North, Range 11 East, Langlade County, Wisconsin



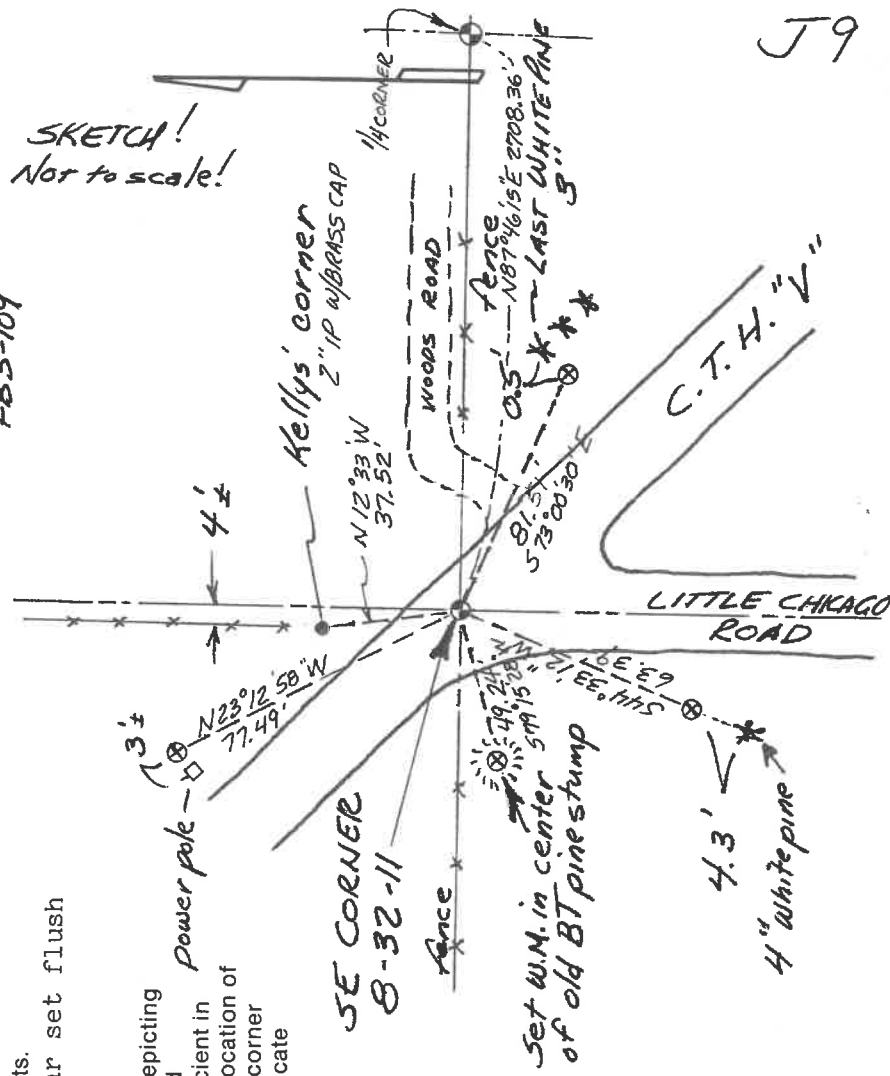
T. 32 N., R. 11 E.

- (b) Describe any record evidence, monument evidence, occupational evidence, testimonial evidence or any other material evidence you considered, and whether the monument was found or placed.  
 The original corner was established in 1860 by H.C. Fellows. Original BT's: Hemlock, 12", N80°W, 10 lks., Hemlock, 13", S70°E, 11 lks. In County Surveyor records, FB105-49, Hutchinson makes reference that Dorr used Ed's (?) BT's. Brooks had a distance of 73 links (48.18') to BT pine stump West. On 6/17/80, former surveyor Kelly "Located a 1" steel bar probably set by M. Hutchinson..." and replaced it with a brass capped monument. Kellys corner is in the ditch on the north side of the road intersection. On 5/21/93, I dug in the road, and at a depth of 28", and found a 1 1/4" x 7" section of pipe, horizontal in ground. At 30" down, I found a matching 1 1/4" pipe upright in ground and in good condition. 0.3' West of the pipe found, I found an upright wood stick, apparently set at one time to mark the pipe. From the pipe found, I meas. west, 48 feet to the face of the remains of a large old pine stump. (approx. 30+ dia.). (con't. on reverse)

- (c) In the plan view drawing below, provide reference ties to at least 4 witness monuments, or, if the location is within a municipality, to at least 2 witness monuments. (Witness monuments shall be made of concrete, natural stone, iron or other equally durable material.)  
 Describe witness monuments.

⊗ = 3/4" x 30" re-bar set flush

- (d) Show a plan view drawing depicting the relevant monuments and reference ties which is sufficient in detail to enable accurate relocation of the corner monument if the corner monument is disturbed. Indicate north.

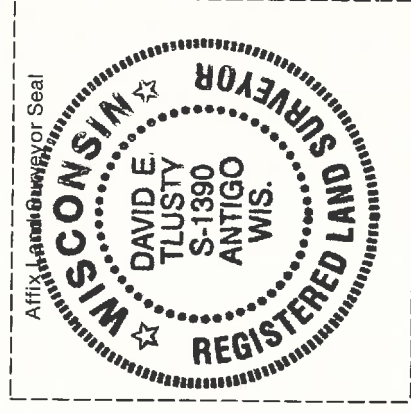


Describe any material discrepancy between the location of the corner as restored or reestablished and the location of that corner as previously restored or reestablished by distance and direction. Show the discrepancy on the plan view drawing under (d), above. Show the distances between the corner as previously restored or reestablished and (1) the corner as restored or reestablished, and (2) to at least 2 of the witness monuments shown on the drawing in (d), above. (con't. from from side)

Don Solin, adjoining landowner, told me that his father always said that the corner was in the road and that Kellys' corner was wrong. I accept the iron pipe found in the road as the corner previously used by Hutchinson, Donr and Ed (Brooks?) and as the best evidence of the original corner location. Kellys' corner is approximately 38 feet north of the true corner found in the road. (See sketch on front side). For the corner and directly over the iron pipe found, I set a 1 1/4" x 28" iron pipe with a 4" brass cap, top of which is 0.1' below the road surface.

- (f) Was the corner restored through acceptance of (1) an obliterated evidence location, or, (2) a found perpetuated location?  
A found perpetuated location.

- (g & h) Was the corner reestablished through lost corner proportionate methods? If so, show the method, including the directions and distances to other public land survey corners used as evidence or used for proportioning in determining the corner location.  
No.



(i) I, David E. Tlusty, Langlade County Surveyor,  
(type or print name)

certify that the corner location shown on this record was determined by me or under my direction and control and that this U.S. Public Land Survey Monument Record is correct and complete to the best of my knowledge and belief.

David E. Tlusty 9/25/95  
Signature Date

CERTIFIED LAND CORNER RESTORATION

Index No. 1-9

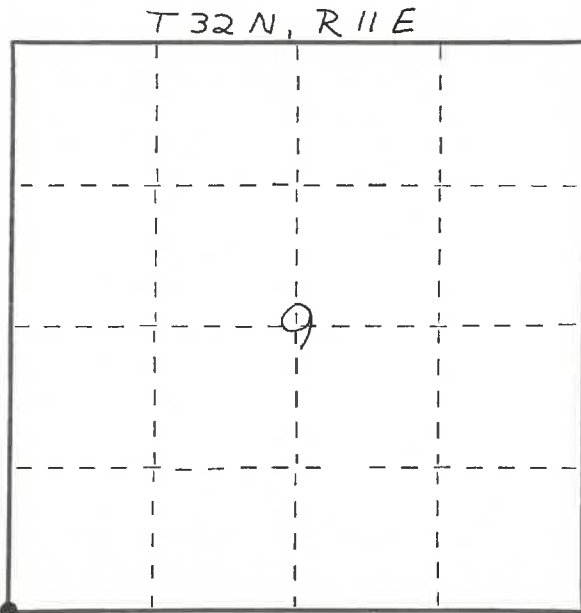
State of Wisconsin }  
 County of LANGLADE } ss.

I WILLIAM F. KELLY, do hereby certify that on the 17<sup>th</sup> day of JUNE, 1980, I found evidence of the SW SECTION corner of SECTION 9 Township 32, North, Range 11 EAST, Fourth Principal Meridian, as described hereon; and that from this evidence I established a new monument and accessories as described hereon to perpetuate the original location of this corner.

Resident witnesses:

.....  
 .....  
 .....

FORM 985 H. C. MILLER CO., MILWAUKEE

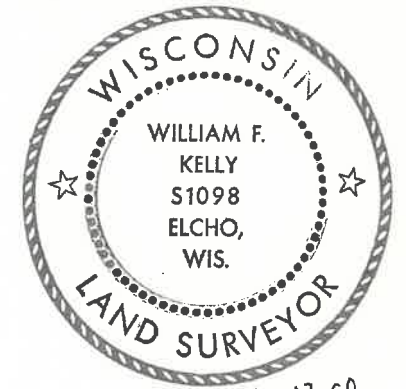


○ = Corner monument restored.

History of original corner establishment:

ORIGINAL CORNER ESTABLISHED BY HIRAM FELLOWS IN THE 1860'S.

*See New Cor Form By D.T.*



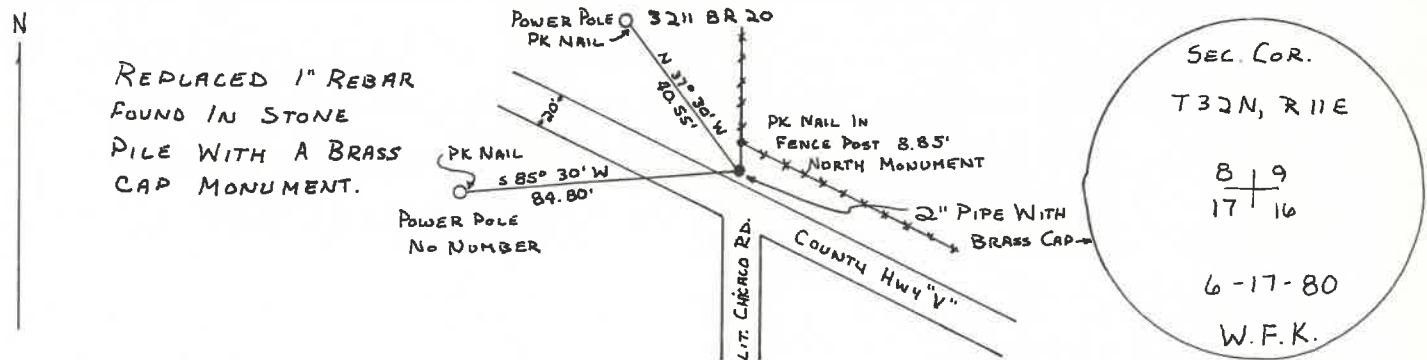
*William F. Kelly*

Description of corner evidence found:

LOCATED A 1" STEEL BAR PROBABLY SET BY M. HUTCHINSON ON A PREVIOUS SURVEY.

SET A 2" x 42" IRON PIPE WITH BRASS CAP AND WITNESSED CORNER LOCATION TO POWER POLES. CORNER IS LOCATED ON THE NORTH SIDE OF COUNTY HWY "V" PAVEMENT.

Description of monument and accessories I established to perpetuate the original location of this corner.



Dated at ELCHO, Wis., this 18<sup>th</sup> day of JUNE, 1980.

Signature William F. Kelly Title COUNTY SURVEYOR Registration No. S-1098  
 (County Surveyor, Registered Land Surveyor, or other duly authorized official)

Office of Register of Deeds, County of....., I hereby certify that the within instrument was filed in this office for record on the..... day of....., 19..... at..... o'clock..... M.

(Register of Deeds)

By..... Deputy