

4321107 2000

U.S. PUBLIC LAND SURVEY MONUMENT RECORD

(Prepared and as required by S. A-E 7.08 WI Administrative Code)

The EAST 1/4 corner of Section 7 T. 32 N., R. 11 E., Langlade County, WI
Corner was (check all that apply)

- Restored through acceptance of an obliterated evidence location.
- Restored through acceptance of a found perpetuated location.
- Determined to be lost and re-established through proportionate methods. (show bearings and distances to PLSS corners used for proportioning.)
- Restored/recovered/re-established in a location that differs from a previously established position. (Show difference in plan view below.)
- Check here if additional information is shown on the reverse side of this form.

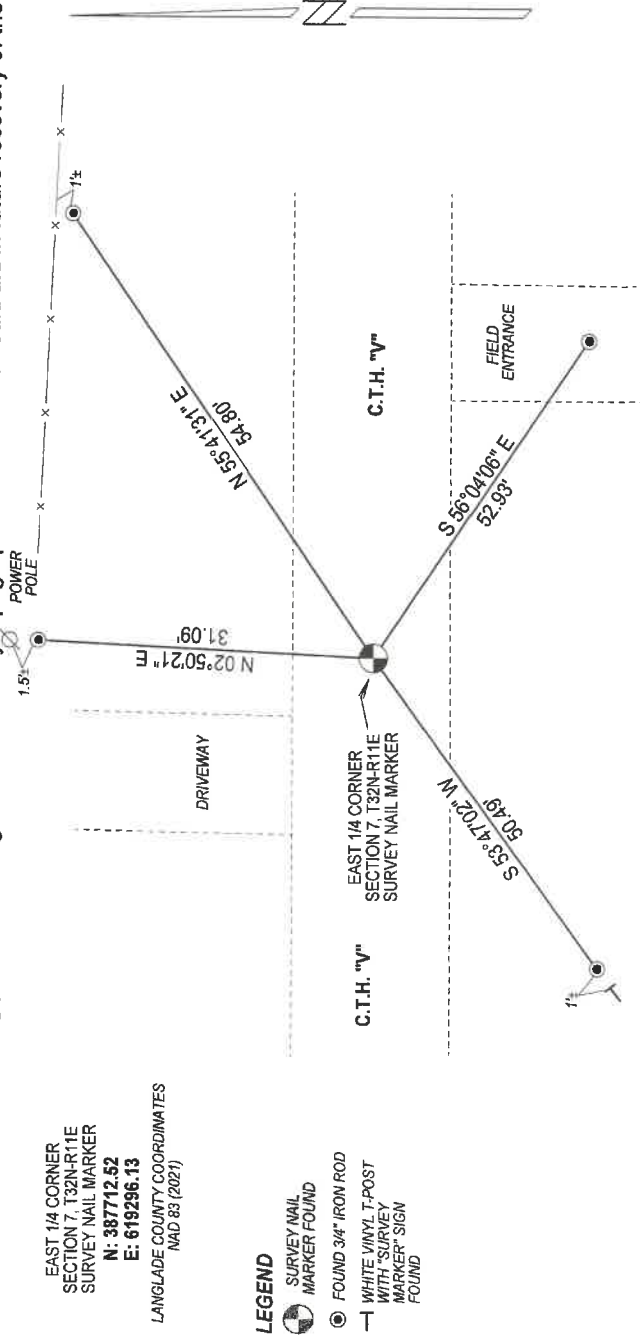
Describe record evidence, recovered physical evidence, occupational evidence, testimonial evidence, and all other evidence considered in the recovery/restoration of the corner.

- 1860 - Original corner established by H.C. Fellows - bearing trees: Birch, 12", N70°W, 8 links and a Basswood, 9", S43°E, 9 links.
- 1879 - Deleglise performing a road survey, came from the W1/4 Corner, found the 1/4 post and original BT's and set 2 new BT's.
- 1887 - Dorr visited the corner from the NE corner of Section 7 with a distance of 2678.28'.
- ±1996 - D. Tiusty dug for corner here and found nothing.
- 1999 - D. Higginbotham searched for corner and found nothing. Set a 4 1/2" gear headed spike at the c/l of C.T.H. "v" and the extension of a north-south fence and tied it out. His distance to the NE corner of Section 7 was 2655.02.
- 2022 - I found a survey nail marker at the corner. Verified location with existing ties.

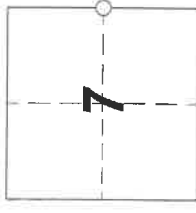
Physical description of the monument set:

I accept the survey nail marker as the corner and tied it out as shown below.

Describe the accessories used to perpetuate the location of the corner. Include a plan view drawing and indicate accessories found/set. Describe measuring point on bearing trees. Show any topographic features that would aid in future recovery of the corner.



The EAST 1/4
Corner of Section 7
T. 32 N., R. 11 E.
Langlade County, WI



○ = Location of corner

NOTES
- SKETCH NOT DRAWN TO SCALE.
- TIE BEARINGS SHOWN ARE LANGLADE COUNTY GRID BEARINGS.
- ALL TIES MEASURED ELECTRONICALLY WITH TOTAL STATION.

SURVEYOR'S SEAL



I, Michael J. Hoffman, certify that the corner location shown on this record was determined by me or under my direction and control and that this U.S. Public Land Survey Monument Record is correct and complete to the best of my knowledge and belief.

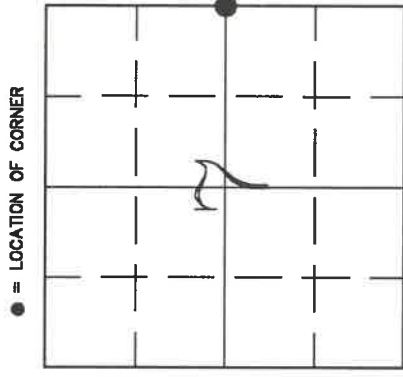
Michael J. Hoffman 12/12/2022
Signature Date

U.S. PUBLIC LAND SURVEY MONUMENT RECORD

HISTORY OF ORIGINAL CORNER ESTABLISHMENT AND SUBSEQUENT RESTORATION AND DESCRIPTION OF ANY RECORD, MONUMENT OCCUPATIONAL, TESTIMONIAL OR OTHER EVIDENCE CONSIDERED:

The Original Corner was established in 1860 by Hiram C. Fellows. Original Bearing Trees: Birch 12" N70W Blks., Basswood 9" S43E Blks. In Sept. 1879, Deleglise, performing a road survey, came from the W1/4 Corner, found the 1/4 Post and original BT's, and set 2 new BT's. Dorr, in 1887, in the process of his Resurvey work, visited the Corner from the NE COR of Sec 7 with a distance of 2678.28'. On 8/13/99, Becky and Gerry Bahar searched for corner and found nothing. We set a 4 1/2" Gear Headed Spike at the C.L. of CTH V and the extension of a North-South Fence and tied it out. Our distance to the NE COR of Sec 7 is 2655.02'.

*D. Trusty 266 for Corner METERS IN 1996±.
Found Nothing. D.T. 7/24/00*



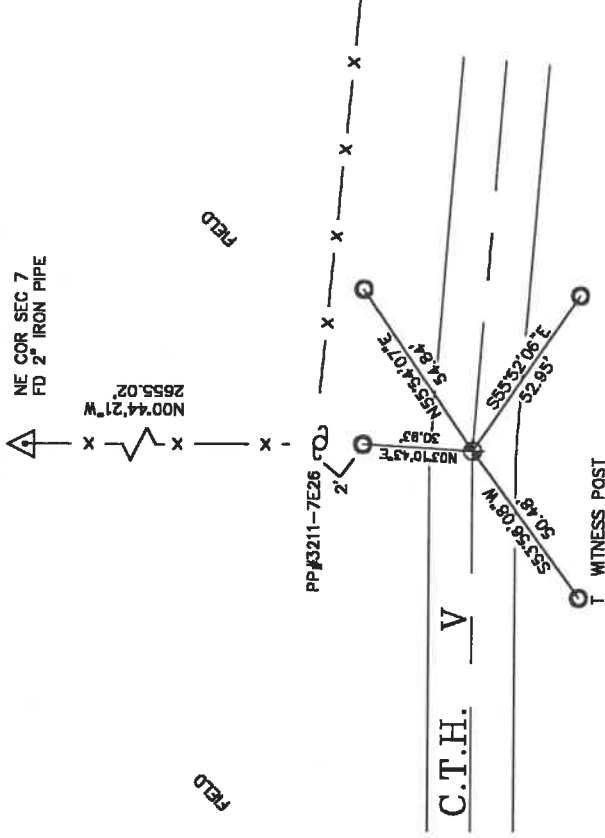
● = LOCATION OF CORNER

SECTION 7
TOWNSHIP 32 NORTH, RANGE 11 EAST
TOWN OF NEVA
LANGLADE COUNTY, WISCONSIN

CORNER WAS: (CHECK ALL THAT APPLY)

- RESTORED THROUGH ACCEPTANCE OF AN OBLITERATED EVIDENCE LOCATION
- RESTORED THROUGH ACCEPTANCE OF A FOUND PERPETUATED LOCATION
- CONSIDERED A LOST CORNER AND REESTABLISHED THROUGH LOST CORNER PROPORTIONATE METHODS (INCLUDE A PLAN VIEW DRAWING SHOWING DISTANCES AND DIRECTIONS TO OTHER PUBLIC LAND SURVEY CORNERS USED FOR PROPORTIONING AND DETERMINING THE CORNER LOCATION)
- RESTORED OR REESTABLISHED IN A LOCATION THAT DIFFERS FROM A PREVIOUS RESTORATION OR REESTABLISHMENT (INCLUDE A PLAN VIEW DRAWING AND INDICATE WHAT WAS SET AND/OR FOUND)
- CHECK IF THERE IS ADDITIONAL INFORMATION ON BACK

DESCRIBE THE MONUMENT AND ACCESSORIES USED TO PERPETUATE THE LOCATION OF THE CORNER. (INCLUDE A PLAN VIEW DRAWING AND INDICATE WHAT WAS SET AND/OR FOUND) ALSO INCLUDE FOUR TIES TO THE SECTION CORNER AND DESCRIPTION OF THE TIES.

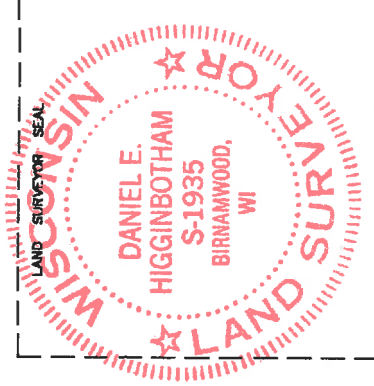


3211072000

- SET 4 1/2" GEAR HEADED SPIKE
- SET 3/4"x30" REBARS @ TIES

FIELD

FIELD



DANIEL E. HIGGINBOTHAM

(Type or print name) CERTIFY THAT THE CORNER LOCATION SHOWN ON THIS RECORD WAS DETERMINED BY ME OR UNDER MY DIRECTION AND CONTROL AND THAT THIS U.S. PUBLIC LAND SURVEY MONUMENT RECORD IS CORRECT AND COMPLETE TO THE BEST OF MY KNOWLEDGE AND BELIEF.

Daniel E. Higginbotham
SIGNATURE

2/28/00
DATE

INDEX NO. G5