

LANGLADE COUNTY U.S. PUBLIC LAND CORNER RESTORATION

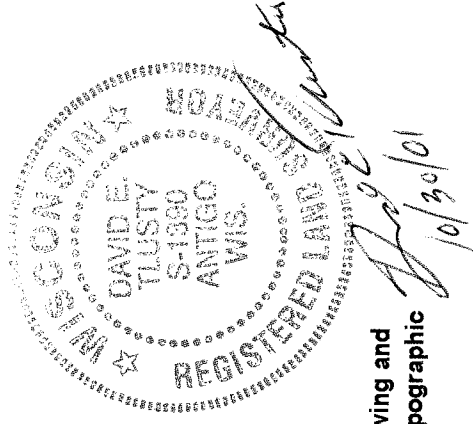
The East corner of Section 6, T. 32 N., R. 11 E., Langlade County, WI.

- Corner was: (check all that apply)
- Restored through acceptance of an obliterated evidence location.
 - Restored through acceptance of a found perpetuated location.
 - Determined to be lost and re-established through proportionate methods.
 - Show bearings and distances to PLSS corners used for proportioning, and show original distances).
 - Restored/recovered/re-established in a location that differs from a previously established position.
 - (Show difference in plan view below).
 - Check here if additional information is shown on the reverse side of this form.

3211062000

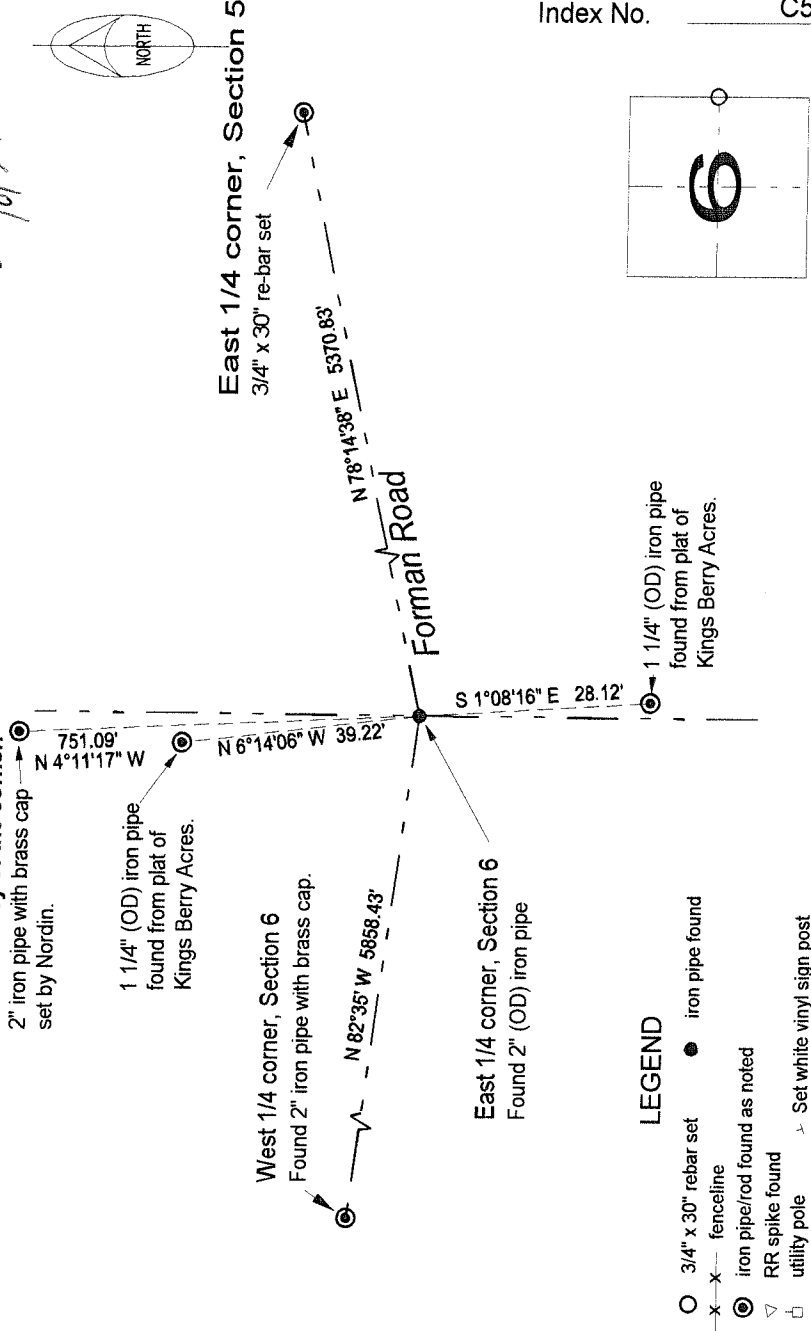
Describe record evidence, recovered physical evidence, occupational evidence, testimonial evidence and all other evidence considered in the recovery/restoration of the corner.

(SEE CORNER HISTORY ON REVERSE SIDE)

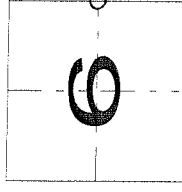


Physical description of the monument set:
Left existing 2" (OD) in place.

Describe the accessories used to perpetuate the corner. Include a plan view drawing and accessories found/set. Describe measuring point on bearing trees. Show any topographic features that would aid in future recovery of the corner.



- LEGEND**
- 3/4" x 30" rebar set
 - x—x— fenceline
 - ⊙ iron pipe/rod found as noted
 - ▽ RR spike found
 - utility pole
 - Set white vinyl sign post
 - iron pipe found



○ = corner perpetuated
The East quarter corner of Section 6, T. 32 N., R. 11 E., Langlade County, WI

Bearings referenced to Langlade County
Coordinate System (LCCS) grid.

I, David E. Trusty, Registered Land Surveyor, as Langlade County Surveyor, certify that the corner location on this record was determined by me and that this U.S. Public Land Survey Monument Record is correct to the best of my knowledge and belief.

Index No. C5 32-11

HISTORY OF EAST 1/4 CORNER, SECTION 6-32-11, TOWN OF NEVA
(dimensions in parenthesis are recent measurements. DH indicates measurement by
Dan Higginbotham, others are by me)
1860 - Original corner established by Hiram C. Fellows
Original B.T.'s: birch, 8", N52°W, 5 lks
lind, 7", S39°E, 13 lks

1881 - survey of the village of Kempster


1882 - B.F. Dorr (FB98-49) Survey in Section 5
W 1/4 corner to NW corner 3309.24' (3320.68' DH)
E-W 1/4 line = 5385.6' (5370.83')
W1/4 corner to Ctr = 2681.58' (2680.05')
N-S 1/4 line = 5000.82' (5018.32')
E-W 1/16th line in NW 1/4 = 2717.88' (2708'±)

1898 - B.F. Dorr (FB97-41) Survey in Section 6
E-W 1/4 line: 5855.52' (5858.43')
N-S 1/4 line: 5337.42' (5342.31')
N-S 1/6th line in SE 1/4: 2014.98 (2024.04')
W1/4 cor east: 3168' (3161.00')
1900 - Dorr Survey in Section 6
CN1/16 north: 1570.14' (1561.38')

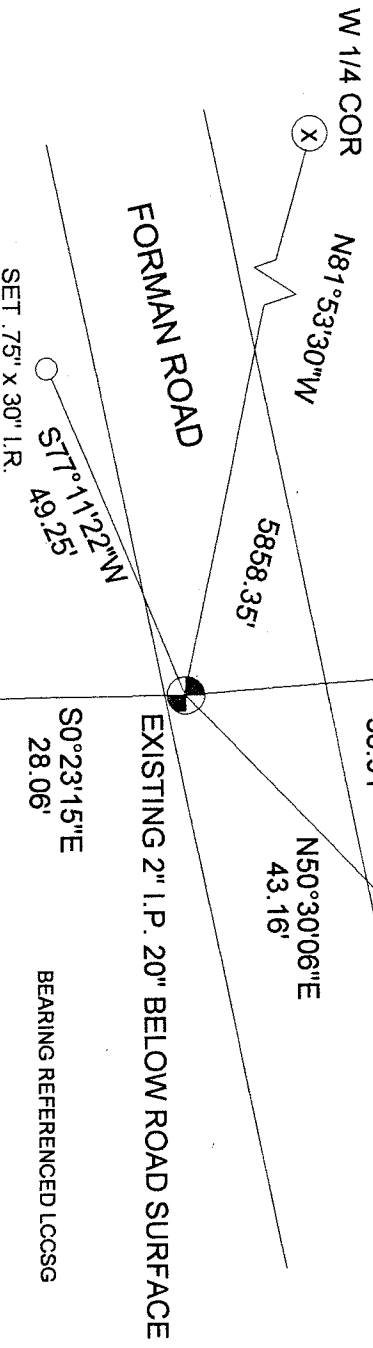
1906 - E.S. Brooks Survey in Section 5
W1/4 corner "Original lind stump good. Birch gone."
1970 - R.W. Nordin Set a 2" x 30" iron pipe by single proportionate measurement
between the SE corner of Section 6 and the NE corner of Section 6. NOTE:
Nordin's map indicates that he set the SE corner of Section 6 by "single"
proportionate measurement, which by his bearings reveals that this is not what
was done. If the SE corner of 6 was deemed a "lost" corner, it should have been
re-established by double proportionate methods which would have required Nordin
to measure to the south quarter corner or SE corner of Section 5 which was not
done.
1983 - W.F. Kelly 12/29/83 " 2" iron pipe set in a rock pile, found in place.
Set 4" aluminum cap witness monument." Kelly apparently monumented Nordin's
erroneous corner.

1994 David E. Tlusty, RLS Found very old iron pipe deep in Forman Road at a
position that very closely matches Dorr's measurements in Section 5 & 6. Corner
found is in line with a very old, fenceline running north and south from road.
Accepted it as the correct corner, matching Dorr's distances within reason and
obviously being the same position used for the original survey of the Village of
Kempster.



EXISTING 1.25"(OD) I.P.  SET .75" x 30" I.R.

(ALL BEARINGS AND DISTANCES REMEASURED)



EXISTING 1.25"(OD) I.P. 

S0°23'15"E
28.06'

BEARING REFERENCED LCCSG

I, Dean A. Williams RLS 2468, certify that the
corner location shown on this record was determined
by me or under my direction and control and that this
U.S. Public Land Survey Record is correct and
complete to the best of my knowledge and belief.

Signature

Date

Dean Williams
8/16/04

