

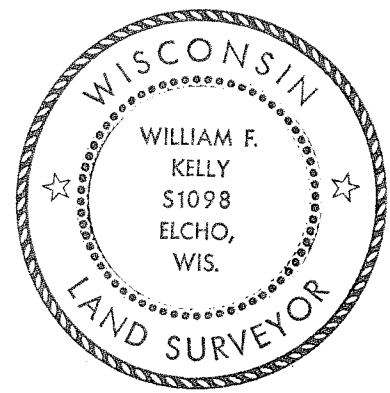
CERTIFIED LAND CORNER RESTORATION

Index No. D-5

State of Wisconsin }  
 County of LANGLADE } ss.

I WILLIAM F. KELLY, do hereby certify that on the 8<sup>th</sup> day of APRIL, 1981, I found evidence of the SOUTH 1/8 corner ON W. LINE OF SEC. 5 Township 32, North, Range 11 EAST, Fourth Principal Meridian, as described hereon; and that from this evidence I established a new monument and accessories as described hereon to perpetuate the original location of this corner.

History of original corner establishment:  
ORIGINAL CORNER ESTABLISHED  
BY HIRAM C. FELLOWS IN SEPT., 1860

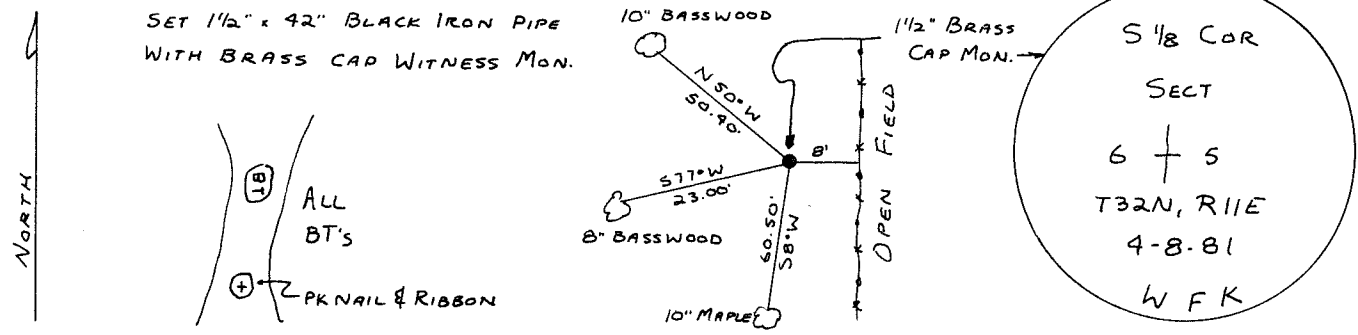
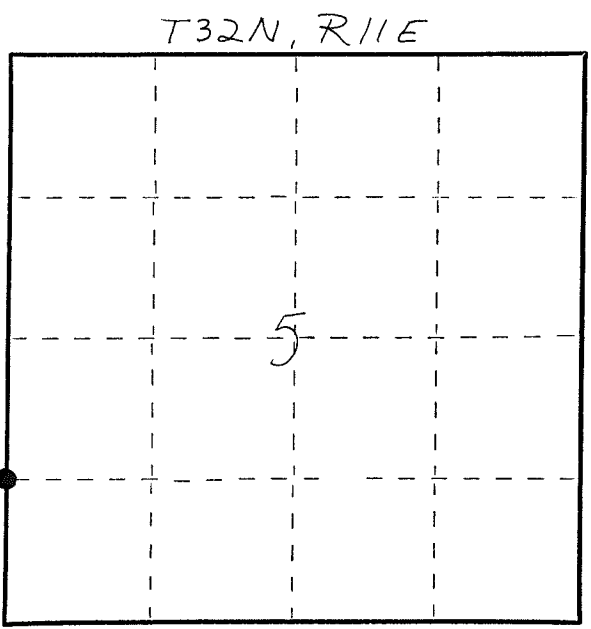


*William F. Kelly*

Description of corner evidence found:  
CORNER ESTABLISHED AT MIDPOINT  
BETWEEN THE W 1/4 CORNER AND  
THE SW CORNER SECTS 5 T32N R11E

Resident witnesses:  
 \_\_\_\_\_  
 \_\_\_\_\_  
 \_\_\_\_\_

Description of monument and accessories I established to perpetuate the original location of this corner.



Dated at ELCHO, Wis., this 8<sup>th</sup> day of APRIL, 1981.

Signature William F. Kelly Title COUNTY SURVEYOR Registration No. 1098  
 (County Surveyor, Registered Land Surveyor, or other duly authorized official)

Office of Register of Deeds, County of \_\_\_\_\_, I hereby certify that the within instrument was filed in this office for record on the \_\_\_\_\_ day of \_\_\_\_\_, 19\_\_\_\_ at \_\_\_\_\_ o'clock \_\_\_\_\_ M.

(Register of Deeds)

By \_\_\_\_\_ Deputy

○ = Corner monument restored.

FORM 985 H. C. MILLER CO., MILWAUKEE