

# U.S. PUBLIC LAND SURVEY MONUMENT RECORD

(Prepared and as required by S. A-E 7.08 WI Administrative Code)

The S 1/4 corner of Section 5, T. 32 N., R. 11 E., Langlade County, WI

Corner was: (check all that apply)

- Restored through acceptance of an obliterated evidence location.
- Restored through acceptance of a found perpetuated location.
- Determined to be lost and re-established through proportionate methods.  
(Show bearings and distances to PLSS corners used for proportioning.)
- Restored/recovered/reestablished in a location that differs from a previously established position. (Show difference in plan view below.)
- Check here if additional information is shown on the reverse side of this form.

Describe record evidence, recovered physical evidence, occupational evidence, testimonial evidence and all other evidence considered in the recovery/restoration of the corner.

- ORIGINAL - HIRAM C. FELLOWS - 1860 - SET 1/4 COR @ 4010 CHAINS EAST & WEST. BT'S < FIR 6" S29°W 91ks., BIRCH 15" N37°E 61ks.
- GARY A. RADTKE - AUG 31, 1977 TIED A SURVEY TO THIS CORNER AS A COMMENCEMENT POINT ON MAP# 30045.

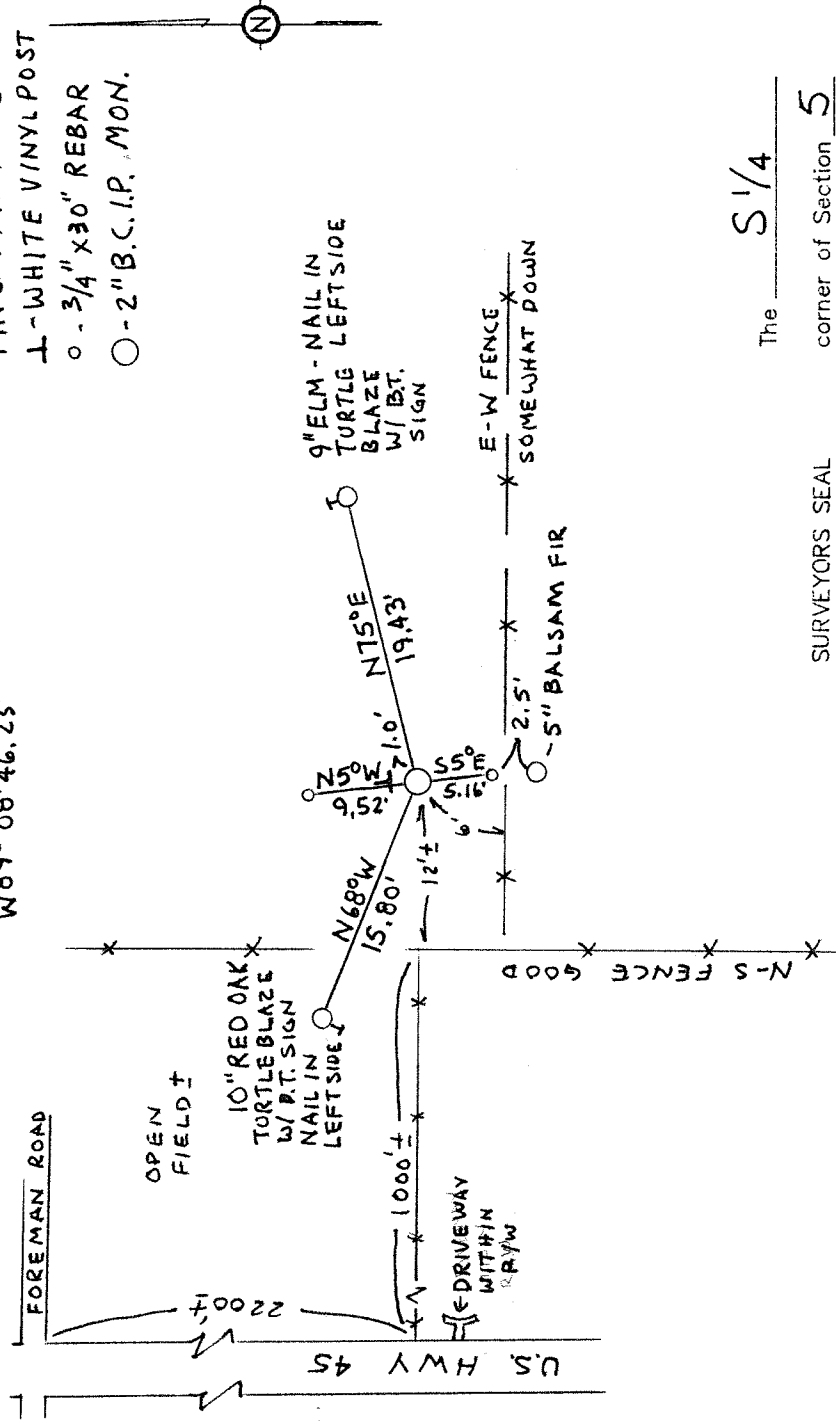
43211050020

Physical description of the monument set: DEAN A. WILLIAMS - JULY 12 2002  
 FOUND 2" B.C.I.P. - NEAR FENCE INTERSECTION, ACCEPTED BCIP AS  
 BEST POSSIBLE EVIDENCE. RETIED ON JULY 12, 2002.

Describe the accessories used to perpetuate the location of the corner. Include a plan view drawing and indicate accessories found/set. Describe measuring point on bearing trass. Show any topographic features that would aid in future recovery of the corner. APPROXIMATE LAT./LONG.

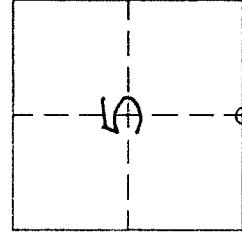
N45° 16' 38.00"  
 W89° 08' 46.23"

- NOT TO SCALE
- MAG BEARINGS
- L - WHITE VINYL POST
- o - 3/4" X 30" REBAR
- - 2" B.C.I.P. MON.



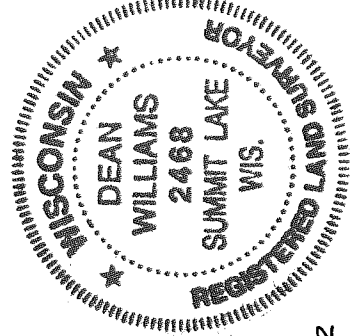
The S 1/4  
 corner of Section 5  
 T. 32 N., R. 11 E.  
 Langlade County, WI

INDEX No. E-7  
32-11



○ = Location of corner

SURVEYORS SEAL



I, DEAN A. WILLIAMS, certify that the corner location shown on this record was determined by me or under my direction and control and that this U.S. Public Land Survey Monument Record is correct and complete to the best of my knowledge and belief.

Dean Williams 8/21/2002  
 Signature Date