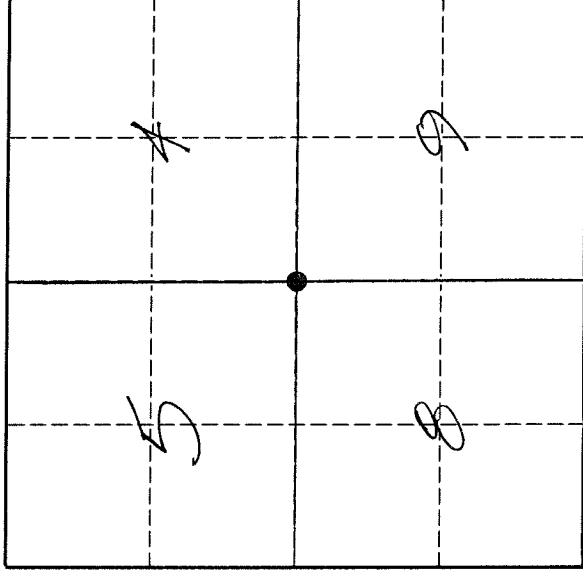


# U. S. PUBLIC LAND SURVEY MONUMENT RECORD

**I N S T R U C T I O N S:**

This record shall show the location of the corner and shall include all of the following nine elements (a through i).

- (a) Identify the corner by reference to the U.S. public land survey system.  
 ● = Corner monument restored.



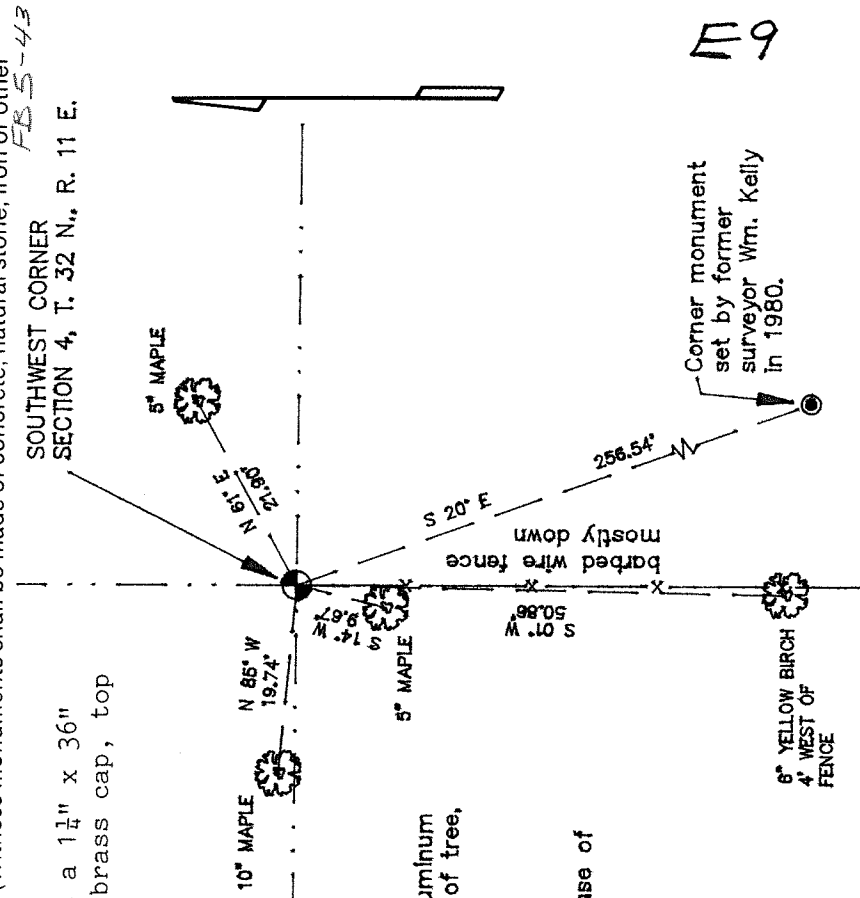
The Southwest corner of Section 4, Township 32 North, Range 11 East, Langlade County, Wisconsin.

T. 32 N., R. 11 E

- (b) Describe any record evidence, monument evidence, occupational evidence, testimonial evidence or any other material evidence you considered, and whether the monument was found or placed.

The original corner was established in 1860 by H.C. Fellows. The original bearing trees were: Birch, 22", S50°W, 12 lks., and a Hemlock, 12", S70°E, 6 lks. In November, 1886, B.F. Dorr did survey work in the NW quarter of Section 9 and measured from this corner to the quarter corners along the south. I find fence corners that agree with Dorr's measurements along the West line of Section 9. Mr. Anton Benes, owner of the NE 1/4 of Section 8 since 1945, said that the fence corners have been in the same place "all the while he owned the land and all the while Schacher (former owner since 1905) owned it".  
 (continued on reverse)

- (c) In the plan view drawing below, provide reference ties to at least 4 witness monuments, or, if the location is within a municipality, to at least 2 witness monuments. (Witness monuments shall be made of concrete, natural stone, iron or other equally durable material.)  
 Describe witness monuments.  
 See below. For the corner, I set a 1 1/4" x 36" flared bottom iron pipe with 4" brass cap, top of which is 0.1' above ground.



- (d) Show a plan view drawing depicting the relevant monuments and reference ties which is sufficient in detail to enable accurate relocation of the corner monument if the corner monument is disturbed. Indicate north.

**NOTES:**

Bearing trees measured to aluminum nail in low blaze on left side of tree.  
 Bearing trees have "BT" signs facing corner.  
 Set white vinyl sign post 0.6 feet north of corner.  
 Corner is 50 feet south of base of hill ascending to the north.

Bearings magnetic with hand compass.

Describe any material discrepancy between the location of the corner as restored or reestablished and the location of that corner as previously restored or reestablished by distance and direction. Show the discrepancy on the plan view drawing under (d), above. Show the distances between the corner as previously restored or reestablished and (1) the corner as restored or reestablished, and (2) to at least 2 of the witness monuments shown on the drawing in (d), above.

In 1980, former surveyor Wm. Kelly established this corner by "double proportionment between existing corners to the north, south and east", and set a monument for the corner. (see sketch on front side of this form).

I disagree with Kellys corner location as shown and described below.

(f) Was the corner restored through acceptance of (1) an obliterated evidence location, or, (2) a found perpetuated location.?

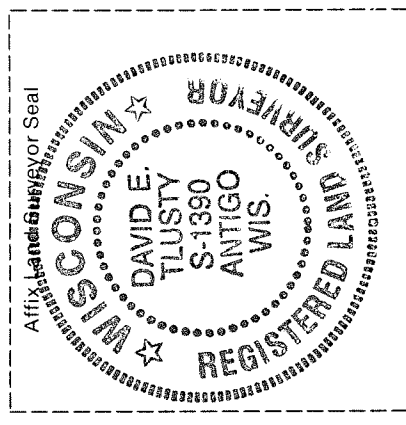
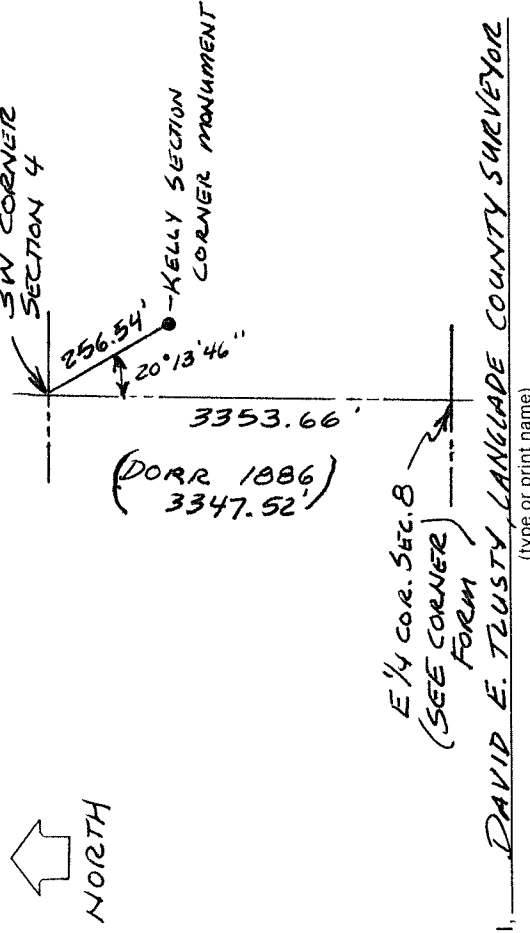
A found perpetuated location, a fence corner verified by Mr. Benes, longtime adjoining landowner, and supported by B.F. Dorr measurement to the Quarter corner to the south.

(g & h) Was the corner reestablished through lost corner proportionate methods? If so, show the method, including the directions and distances to other public land survey corners used as evidence or used for proportioning in determining the corner location.

(continued from front side)  
Based on the facts that:

- 1) Dorr used this corner in 1886, only 26 years after the original survey and he more than likely used the original corner post and/or bearing trees;
- 2) Dorr's measurement from this corner to the Quarter corner to the south agree with my measurements between old fence corners;
- 3) the chain of ownership (Schacher and Benes) of the NE 1/4 of Section 8 could verify that the fences have been in the same place since at least 1905 and,
- 4) although the distance between this corner and the quarter corner to the south is considerably different than the original survey distance, there are at least three other instances in this township where distances between corners are this far off,

I accept the location of the fence corner as the best evidence of the location of the original section corner, and perpetuate said location as shown on the front side of this form.



(i) I, DAVID E. TLUSTY, LANGLADE COUNTY SURVEYOR  
(type or print name)

certify that the corner location shown on this record was determined by me or under my direction and control and that this U. S. Public Land Survey Monument Record is correct and complete to the best of my knowledge and belief.

  
Signature

11/12/93  
Date