

CERTIFIED LAND CORNER RESTORATION

Index No. E-9

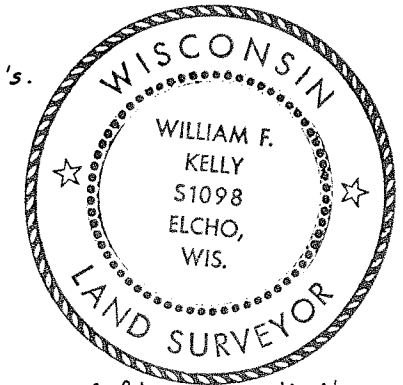
State of Wisconsin }
County of LANGLADE } ss.

I WILLIAM F. KELLY, do hereby certify that on the 8th day of JUNE, 19 80, I found evidence of the NW SECTION corner of SECTION 9 Township 32, North, Range 11 EAST, Fourth Principal Meridian, as described hereon; and that from this evidence I established a new monument and accessories as described hereon to perpetuate the original location of this corner.

Resident witnesses:

History of original corner establishment:

ORIGINAL CORNER ESTABLISHED BY HIRAM FELLOWS IN THE 1860'S.



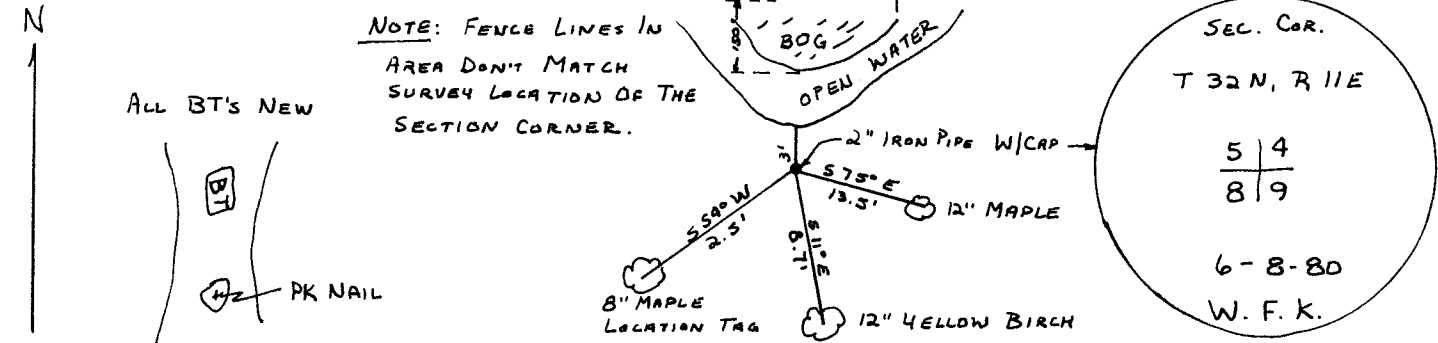
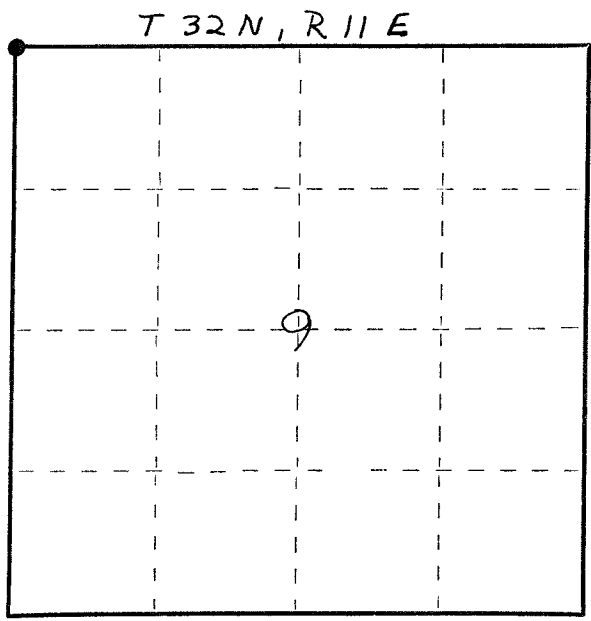
William F. Kelly

Description of corner evidence found:

NONE.

SET 2" x 42" BLACK IRON PIPE BY DOUBLE PROPORTIONMENT BETWEEN EXISTING CORNERS TO THE NORTH, SOUTH, AND EAST.

Description of monument and accessories I established to perpetuate the original location of this corner.



Dated at ELCHO, Wis., this 17th day of JUNE, 19 80.

Signature William F. Kelly Title COUNTY SURVEYOR Registration No. S-1098
(County Surveyor, Registered Land Surveyor, or other duly authorized official)

Office of Register of Deeds, County of _____, I hereby certify that the within instrument was filed in this office for record on the _____ day of _____, 19 _____ at _____ o'clock _____ M.

(Register of Deeds)

By _____ Deputy

○ = Corner monument restored.

FORM 985 H. C. MILLER CO., MILWAUKEE