

LANGLADE COUNTY U.S. PUBLIC LAND CORNER RESTORATION

The East corner of Section 4, T. 32 N., R. 11 E., Langlade County, WI.

Corner was: (check all that apply)

- Restored through acceptance of an obliterated evidence location.
- Restored through acceptance of a found perpetuated location.
- Determined to be lost and re-established through proportionate methods.
- Show bearings and distances to PLSS corners used for proportioning, and show original distances).
- Restored/recovered/re-established in a location that differs from a previously established position.
- (Show difference in plan view below).
- Check here if additional information is shown on the reverse side of this form.

4321104 2000

Describe record evidence, recovered physical evidence, occupational evidence, testimonial evidence and all other evidence considered in the recovery/restoration of the corner.

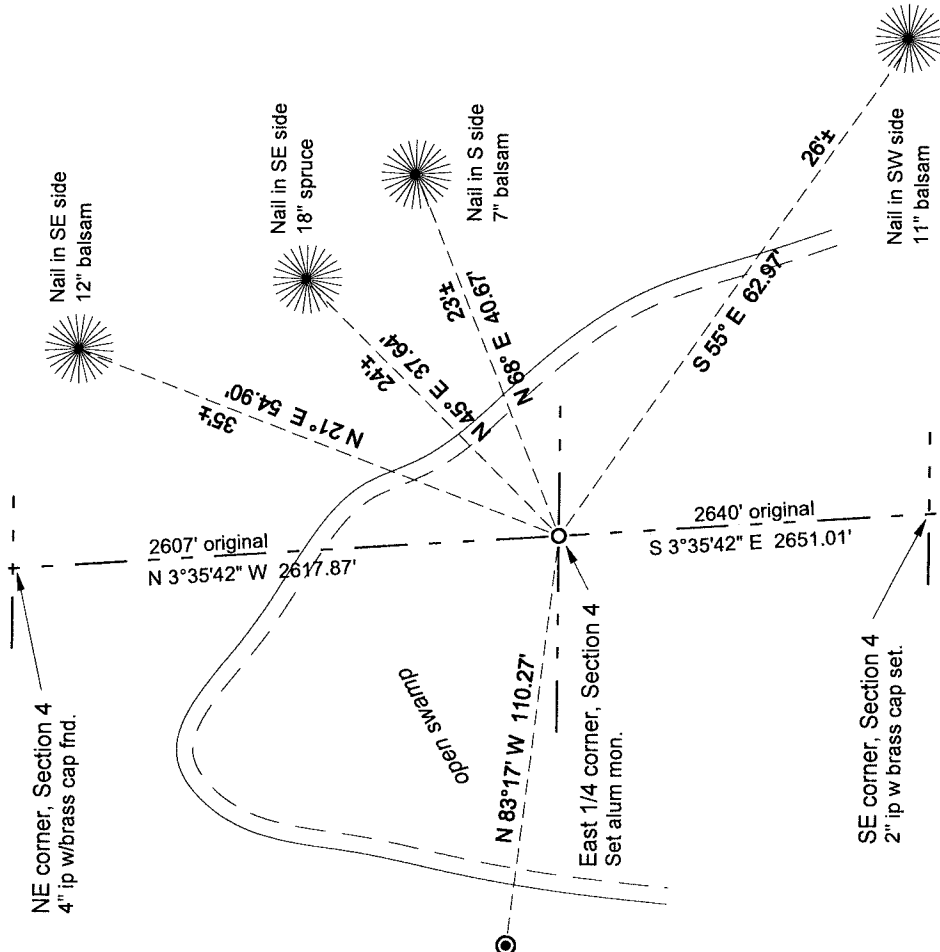
The original corner was established in 1860 by Hiram Fellows. Original bearing trees; birch, 8", S65W, 12 links and a hemlock, 7", N57E, 11 links. In 1980, former surveyor Kelly did a survey in Section 9 and showed that he set this corner by single proportionate measurement between the adjoining section corners. On his survey map, he shows that he set the SE corner of Section 4 by double proportionate measurement. I found errors in his measuring and his proportioning computations which would put that section corner in error and would also put this quarter corner in error. After correcting the SE corner of Section 4, I reset this quarter corner by single proportionate methods. I found Kelly's monument to be as shown on the sketch below.



Physical description of the monument set:

- I set a 1" dia. x 60" aluminum rod monument with a 2" aluminum cap in a small open swamp.
- I set a steel sign post 0.4' north of the corner monument.

Describe the accessories used to perpetuate the corner. Include a plan view drawing and accessories found/set. Describe measuring point on bearing trees. Show any topographic features that would aid in future recovery of the corner.



FB17-142

LEGEND

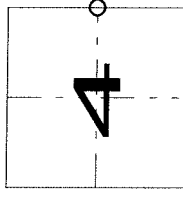
- 2" iron pipe w/brass cap found
- 1" x 60" aluminum rod monument set magnet in cap

Bearing trees are blazed and painted blue and have "Bearing Tree" sign facing corner. Measurement is to an aluminum nail as noted. Bearings magnetic with hand compass.

Bearings referenced to Langlade County Coordinate System (LCCS) grid unless noted otherwise.

Index No.

C13 32-11



○ = corner perpetuated
The East quarter corner of Section 4,
T. 32 N., R. 11 E.,
Langlade County, WI

I, David E. Tlusty, Registered Land Surveyor, as Langlade County Surveyor, certify that the corner location on this record was determined by me and that this U.S. Public Land Survey Monument Record is correct to the best of my knowledge and belief.