

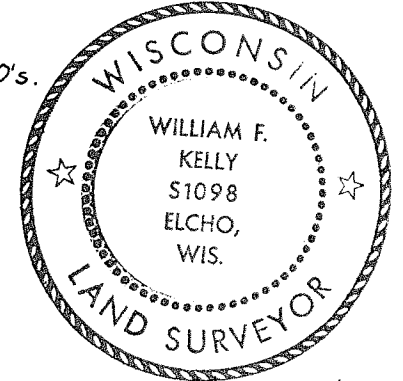
CERTIFIED LAND CORNER RESTORATION

Index No. C-13

State of Wisconsin }  
County of LANGLADE } ss.

History of original corner establishment:

ORIGINAL CORNER ESTABLISHED BY HIRAM FELLOWS IN THE 1860'S.



*William F. Kelly*

I WILLIAM F. KELLY, do hereby certify that on the 16<sup>th</sup> day of JUNE, 1980, I found evidence of the 1/4 CORNER corner of SECTION 4 Township 32, North, Range 11 EAST, Fourth Principal Meridian, as described hereon; and that from this evidence I established a new monument and accessories as described hereon to perpetuate the original location of this corner.

Description of corner evidence found:

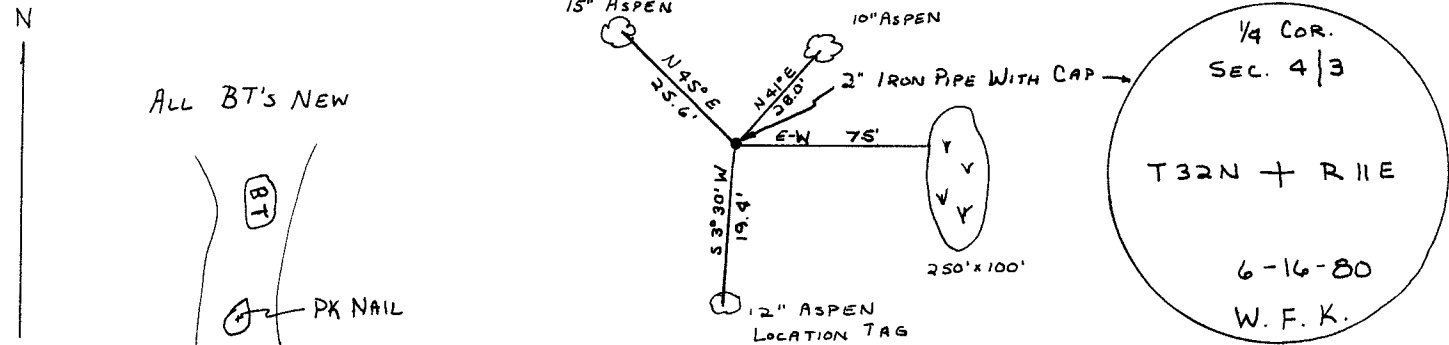
NONE.

SET 2" x 42" IRON PIPE WITH BRASS CAP BY DOUBLE PROPORTIONMENT BETWEEN THE NE AND SE CORNERS OF SECTION 4.

Resident witnesses:

.....  
.....  
.....

Description of monument and accessories I established to perpetuate the original location of this corner.



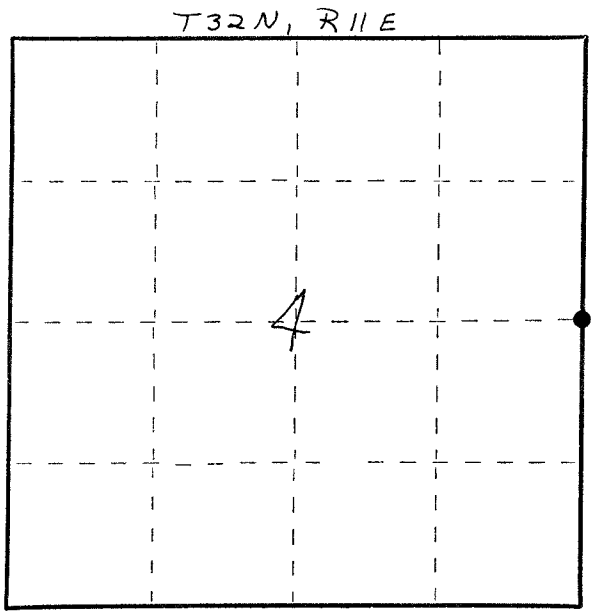
Dated at ELCHO, Wis., this 17<sup>th</sup> day of JUNE, 1980.

Signature William F. Kelly Title COUNTY SURVEYOR Registration No. 5-1098  
(County Surveyor, Registered Land Surveyor, or other duly authorized official)

Office of Register of Deeds, County of....., I hereby certify that the within instrument was filed in this office for record on the..... day of....., 19..... at..... o'clock..... M.

.....  
(Register of Deeds)

By..... Deputy



○ = Corner monument restored.