

CERTIFIED LAND CORNER RESTORATION

Index No. E-10

State of Wisconsin }
County of LANGLADE } ss.

I WILLIAM F. KELLY, do hereby certify that on the 8th day of JUNE, 1980, I found evidence of the W.E.S.T. 1/8 corner of SECTION 9 Township 32, North, Range 11 EAST, Fourth Principal Meridian, as described hereon; and that from this evidence I established a new monument and accessories as described hereon to perpetuate the original location of this corner.

Resident witnesses:

History of original corner establishment:

ORIGINAL CORNER ESTABLISHED BY HIRAM FELLOWS IN THE 1860'S.



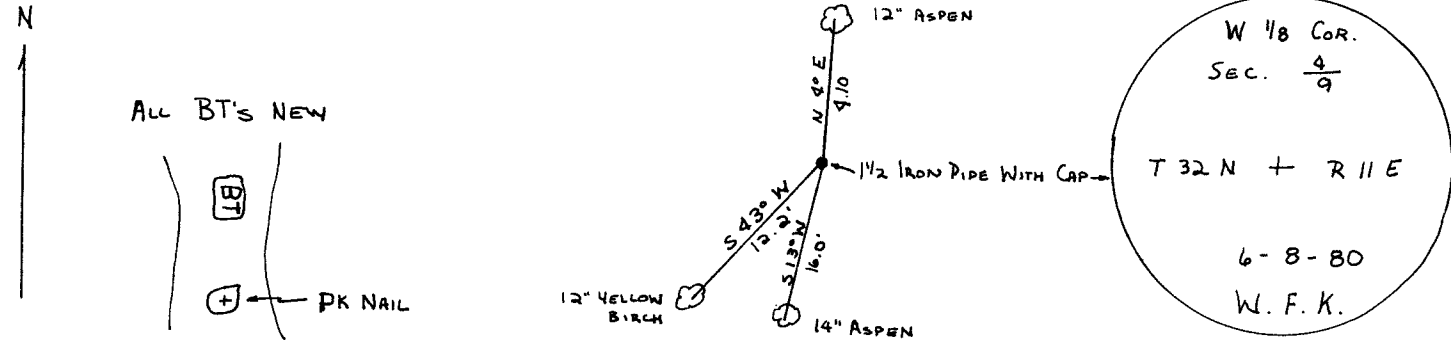
William F. Kelly

Description of corner evidence found:

NONE.

SET 1 1/2" x 42" IRON PIPE WITH BRASS CAP MIDWAY BETWEEN THE NW SECTION CORNER AND THE N 1/4 CORNER OF SECTION 9, T 32 N, R 11 E.

Description of monument and accessories I established to perpetuate the original location of this corner.



Dated at ELCHO, Wis., this 17th day of JUNE, 1980.

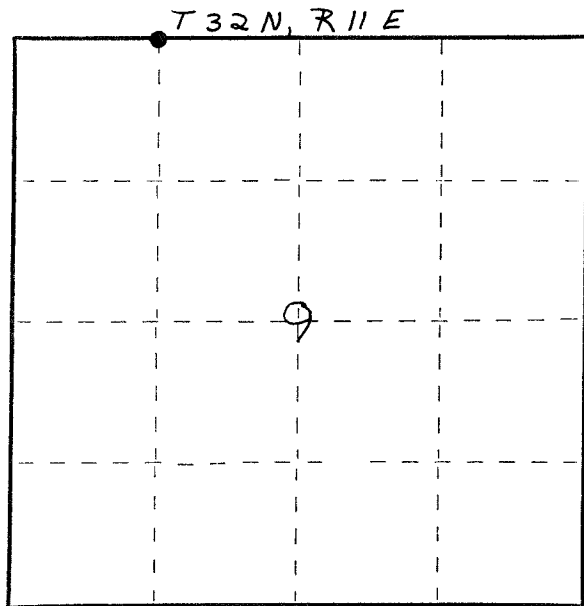
Signature William F. Kelly Title County Surveyor Registration No. S-1088
(County Surveyor, Registered Land Surveyor, or other duly authorized official)

Office of Register of Deeds, County of....., I hereby certify that the within instrument was filed in this office for record on the..... day of....., 19..... at..... o'clock..... M.

(Register of Deeds)

By..... Deputy

FORM 985 H. C. MILLER CO., MILWAUKEE



○ = Corner monument restored.