

# LANGLADE COUNTY U.S. PUBLIC LAND CORNER RESTORATION

The Southeast corner of Section 4, T. 32 N., R. 11 E., Langlade County, WI.

**Corner was: (check all that apply)**

- Restored through acceptance of an obliterated evidence location.
- Restored through acceptance of a found perpetuated location.
- Determined to be lost and re-established through proportionate methods.
- Show bearings and distances to PLSS corners used for proportioning, and show original distances).
- Restored/recovered/re-established in a location that differs from a previously established position.
- (Show difference in plan view below).
- Check here if additional information is shown on the reverse side of this form.

4321104 0000

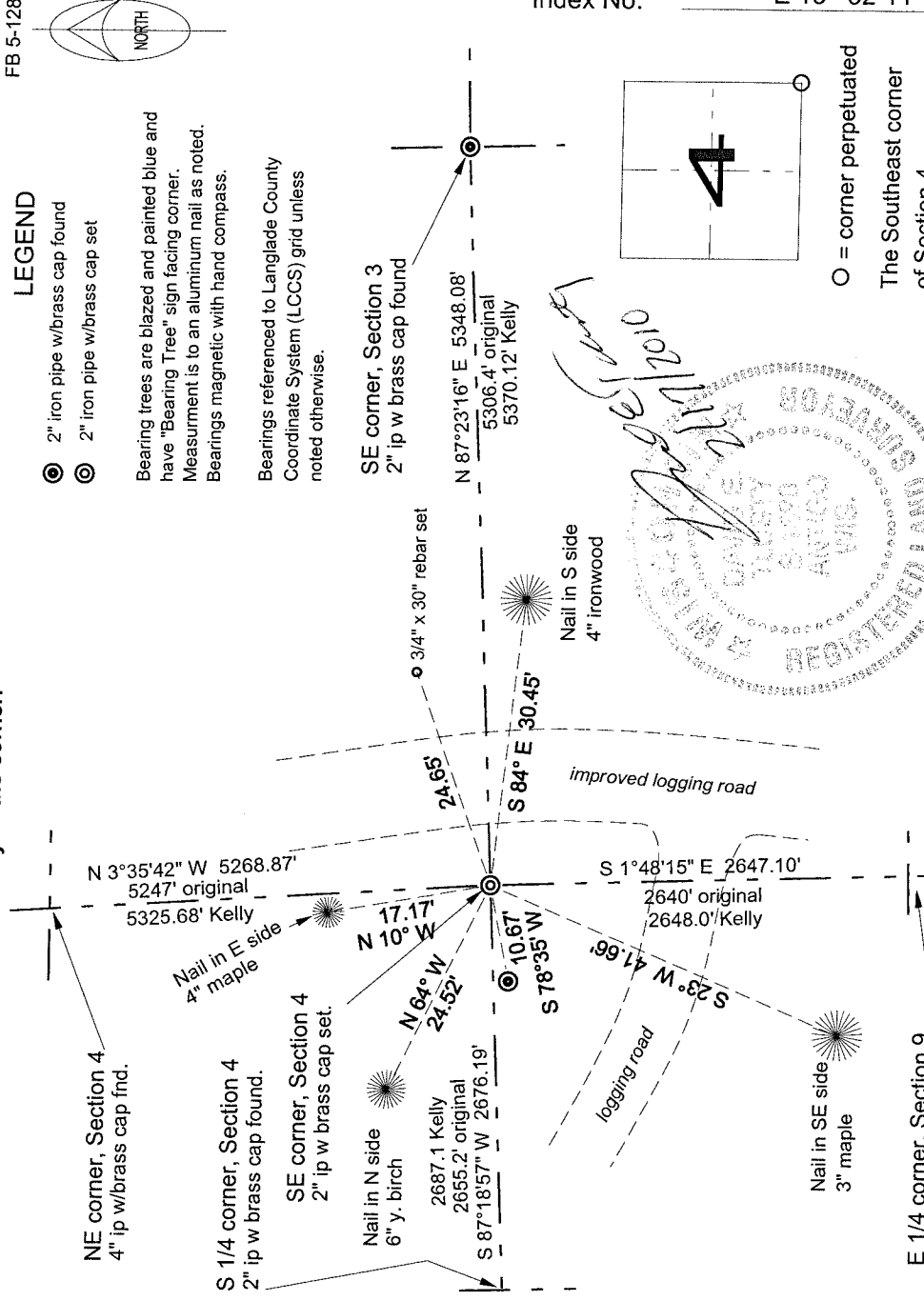
**Describe record evidence, recovered physical evidence, occupational evidence, testimonial evidence and all other evidence considered in the recovery/restoration of the corner.**

The original corner was established in 1860 by Hiram C. Fellows. Original bearing trees: birch, 16", S21E, 16 links and a birch, 14", S81W, 19 links. In 1980, former surveyor Kelly surveyed in Section 9 and, according to information shown on his tie sheet: "Corner was set by double proportioning from Sections 3, 4, 9 & 10." He also noted that the "corner established by survey does not agree with existing fence lines." He set a 2" iron pipe to mark the corner. 1996 D. Tlusty after extensive survey work in and around Section 9, I find that Kellys distances and proportioning computations are in error. I remeasured to the same corners that Kelly used and I set a new monument for the corner, computed by double proportionate measurement. I found very little fence evidence, and none to support or conflict with the established corner position.

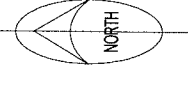
**Physical description of the monument set:**

- I set a 2" dia. x 30" iron pipe with brass cap for the corner, top of which is 0.3' above ground.
- I set a sign post 0.5' north of the corner monument.

**Describe the accessories used to perpetuate the corner. Include a plan view drawing and accessories found/set. Describe measuring point on bearing trees. Show any topographic features that would aid in future recovery of the corner.**

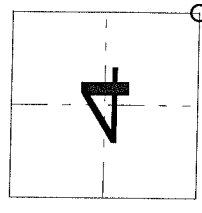


FB 5-128



- LEGEND**
- ⊙ 2" iron pipe w/brass cap found
  - ⊙ 2" iron pipe w/brass cap set
- Bearing trees are blazed and painted blue and have "Bearing Tree" sign facing corner.  
Measurement is to an aluminum nail as noted.  
Bearings magnetic with hand compass.
- Bearings referenced to Langlade County Coordinate System (LCCS) grid unless noted otherwise.

Index No. E 13 32-11



○ = corner perpetuated  
The Southeast corner of Section 4,  
T. 32 N., R. 11 E.,  
Langlade County, WI

I, David E. Tlusty, Registered Land Surveyor, as Langlade County Surveyor, certify that the corner location on this record was determined by me and that this U.S. Public Land Survey Monument Record is correct to the best of my knowledge and belief.