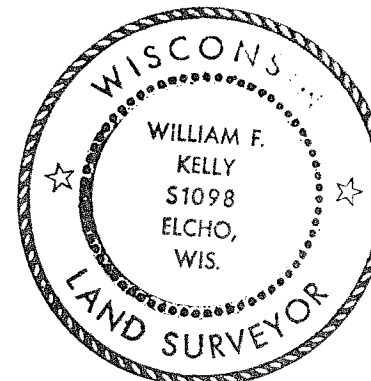


CERTIFIED LAND CORNER RESTORATION

Index No. E-13

State of Wisconsin }
County of LANGLADE } ss.

History of original corner establishment:
ORIGINAL CORNER SET BY MIRAM C. FELLOWS IN SEPT. 1860.



William J. Kelly
6-16-80

I WILLIAM F. KELLY, do hereby certify that on the 2ND day of JUNE, 1980, I found evidence of the NE CORNER corner of SECTION 9 Township 32, North, Range 11 EAST, Fourth Principal Meridian, as described hereon; and that from this evidence I established a new monument and accessories as described hereon to perpetuate the original location of this corner.

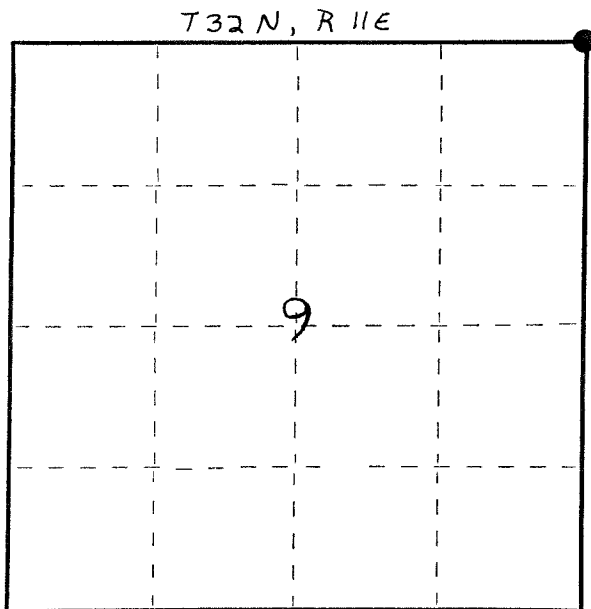
Description of corner evidence found:

NONE.
CORNER WAS BY DOUBLE PROPORTIONING FROM SECTIONS 3, 4, 9, + 10.

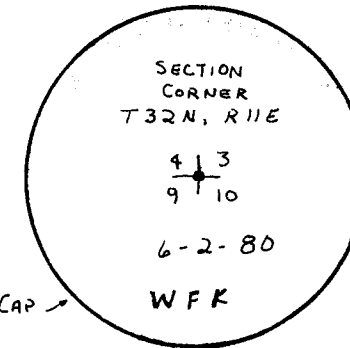
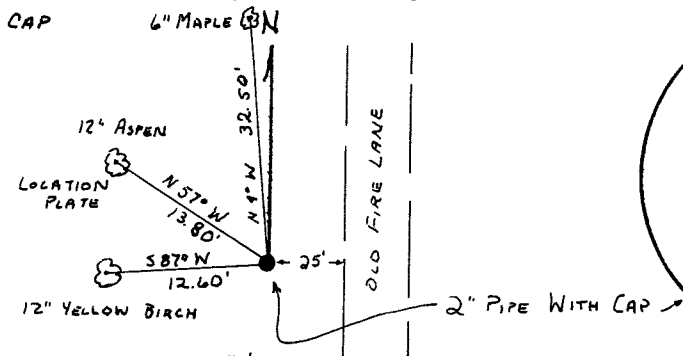
NOTE: CORNER ESTABLISHED BY SURVEY DOES NOT AGREE WITH EXISTING FENCE LINES

Resident witnesses:

Description of monument and accessories I established to perpetuate the original location of this corner.
2" x 42" BLACK IRON PIPE WITH BRASS CAP 6" MAPLE BN



ALL BT'S



Dated at ELCHO, Wis., this 10TH day of JUNE, 1980.

Signature William J. Kelly Title County Surveyor Registration No. 51098
(County Surveyor, Registered Land Surveyor, or other duly authorized official)

Office of Register of Deeds, County of _____, I hereby certify that the within instrument was filed in this office for record on the _____ day of _____, 19____ at _____ o'clock _____ M.

(Register of Deeds)

By _____ Deputy

○ = Corner monument restored.